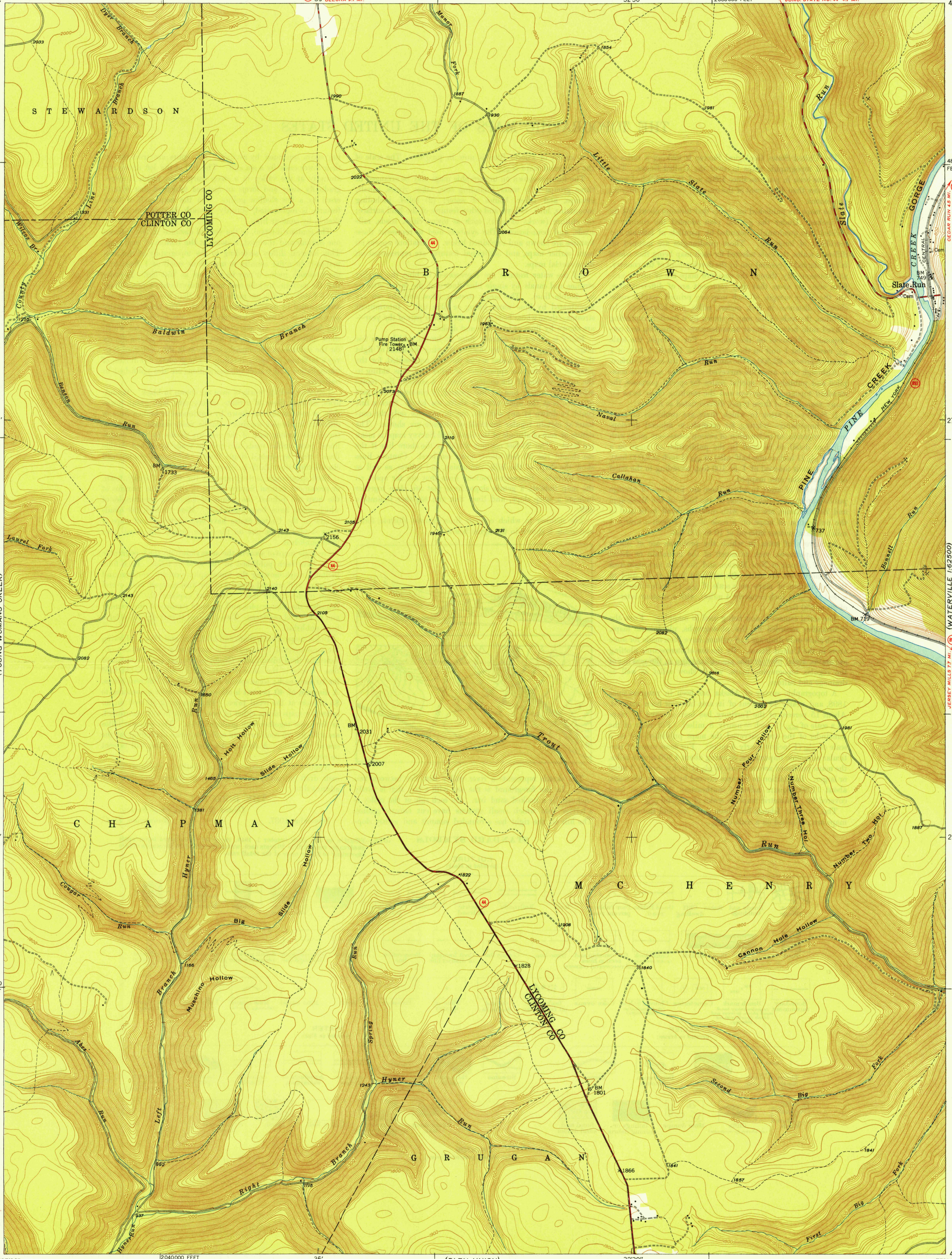


OLEONA  
77°37'30"  
41°30'

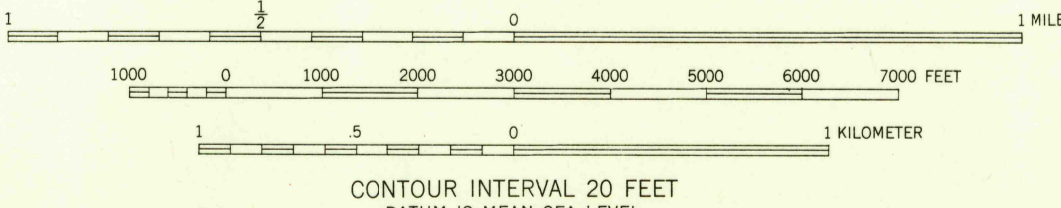
ICEDAR RUN  
77°30"  
41°30'



U.S.G.S.  
FILE COPY  
Inspection and Editing.

U.S.G.S.  
FILE COPY  
Inspection and Editing.

Mapped, edited, and published by the Geological Survey  
Control by USGS and USC&GS  
Topography from aerial photographs by multiplex methods  
Aerial photographs taken 1944. Field check 1946  
Polyconic projection 1927 North American datum  
10,000-foot grid based on Pennsylvania coordinate system,  
North zone



CONTOUR INTERVAL 20 FEET  
DATUM IS MEAN SEA LEVEL

USGS  
HISTORICAL FILE  
TOPOGRAPHIC DIVISION

ROAD CLASSIFICATION  
HARD-SURFACE ALL WEATHER ROADS DRY WEATHER ROADS  
Heavy-duty ——— LEANING LANE Improved dirt  
Medium-duty ——— LEANING LANE Unimproved dirt  
Loose-surface, graded, or narrow hard-surface - - - -  
U. S. Route State Route

U.S.G.S.  
FILE COPY  
Inspection and Editing.

SLATE RUN, PA.  
N4122.5-W7730/7.5

PRINTED 1948

FOR SALE BY U. S. GEOLOGICAL SURVEY, WASHINGTON 25, D. C.

JAN 5 1949

3225