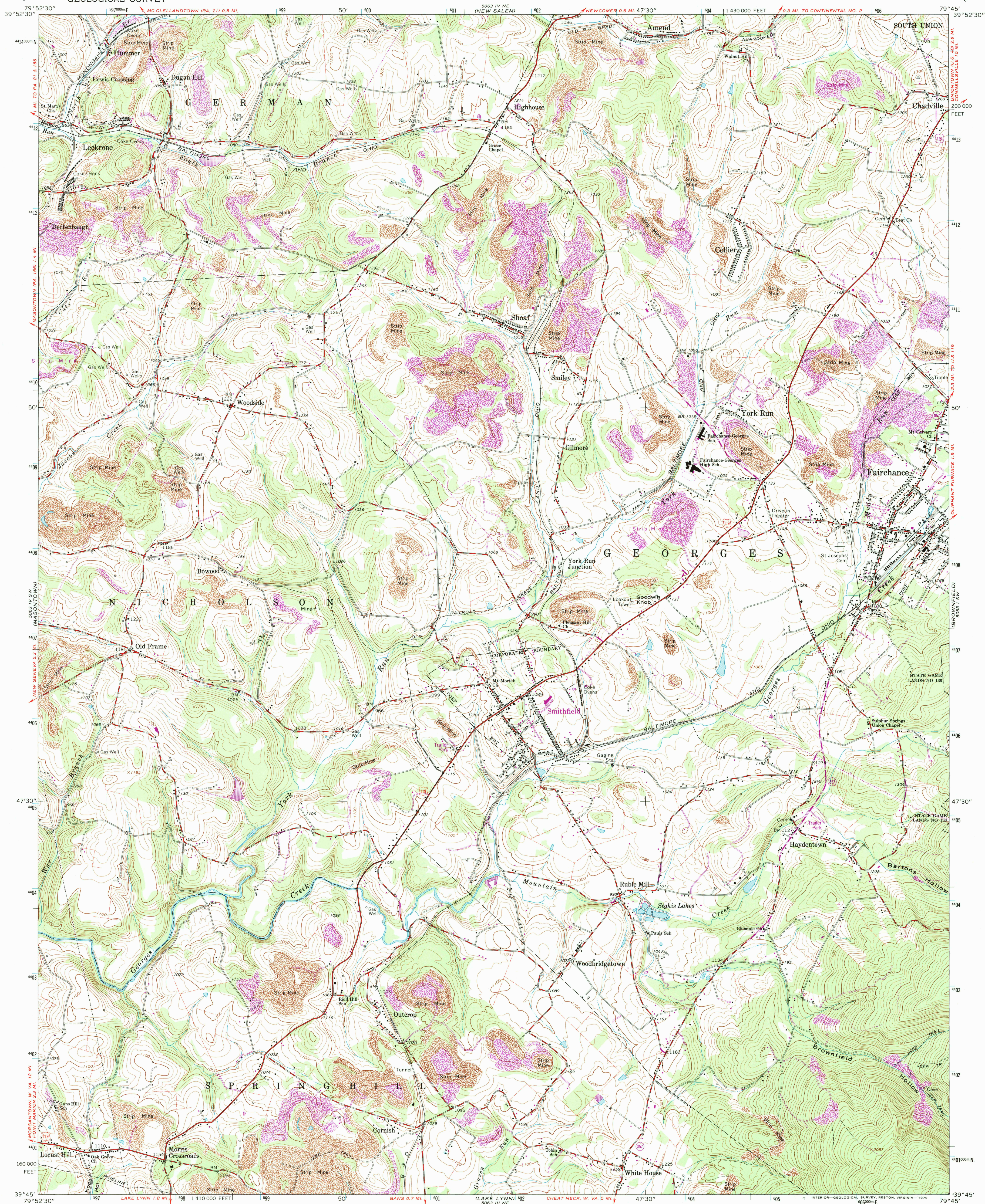


UNITED STATES
DEPARTMENT OF THE INTERIOR
GEOLOGICAL SURVEY

SMITHFIELD QUADRANGLE
PENNSYLVANIA—FAYETTE CO.
7.5 MINUTE SERIES (TOPOGRAPHIC)



Mapped, edited, and published by the Geological Survey

Control by USGS and USC&GS

Topography by photogrammetric methods from aerial photographs
taken 1962 and 1963. Field checked 1964

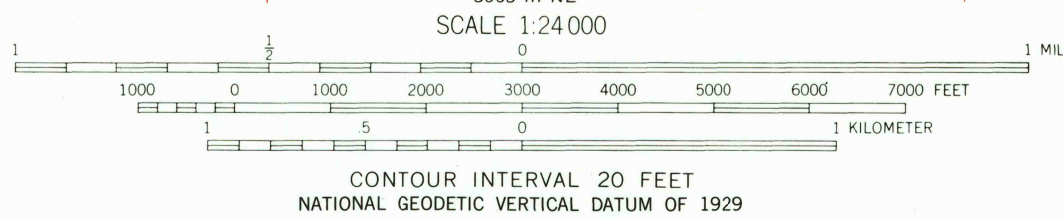
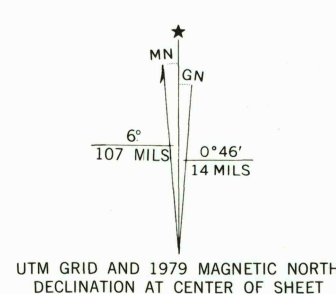
Polyconic projection. 1927 North American datum
10,000-foot grid based on Pennsylvania coordinate system,
south zone

1000-meter Universal Transverse Mercator grid ticks,
zone 17, shown in blue

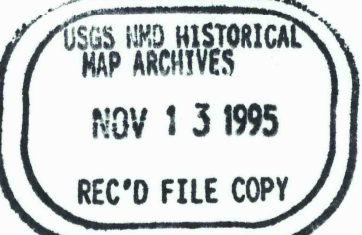
Fine red dashed lines indicate selected fence and field lines where
generally visible on aerial photographs. This information is unchecked

There may be private inholdings within the boundaries
the National or State reservations shown on this map

Revisions shown in purple compiled in cooperation with State of
Pennsylvania agencies from aerial photographs taken 1977 and other
source data. This information not field checked. Map edited 1979



| ROAD CLASSIFICATION | |
|---------------------|-----------------|
| Heavy-duty | Light-duty |
| Medium-duty | Unimproved dirt |
| U.S. Route | State Route |



SMITHFIELD, PA.

N3945—W7945/7.5

1964
PHOTOREVISED 1979
AMS 5063 IV SE—SERIES V831

