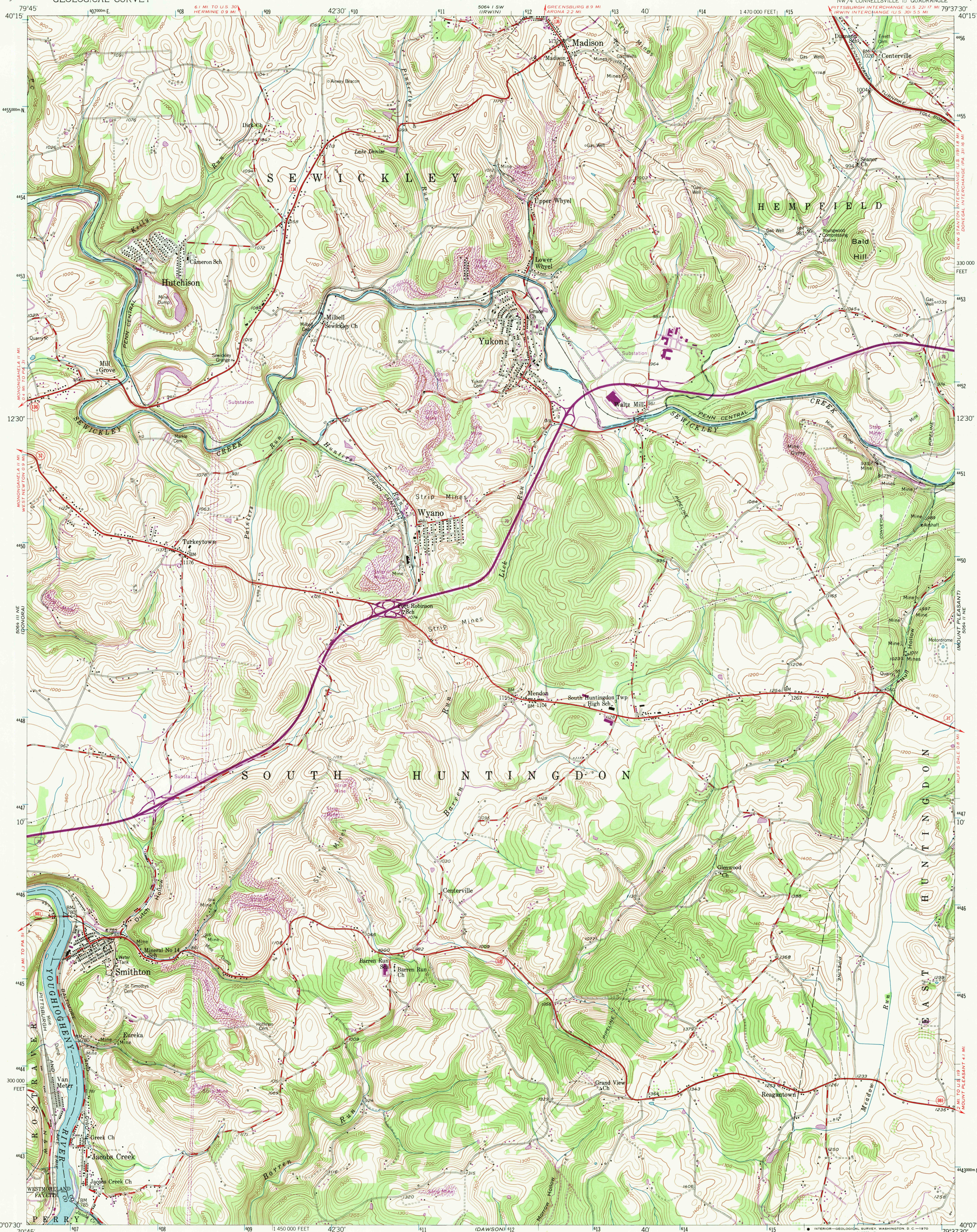


UNITED STATES  
DEPARTMENT OF THE INTERIOR  
GEOLOGICAL SURVEY

SMITHTON QUADRANGLE  
PENNSYLVANIA  
7.5 MINUTE SERIES (TOPOGRAPHIC)

NW/4 CONNELLSVILLE 15 QUADRANGLE  
PITTSBURGH INTERCHANGE (U.S. 221 17 MI)  
IRWIN INTERCHANGE (U.S. 301 5.5 MI)

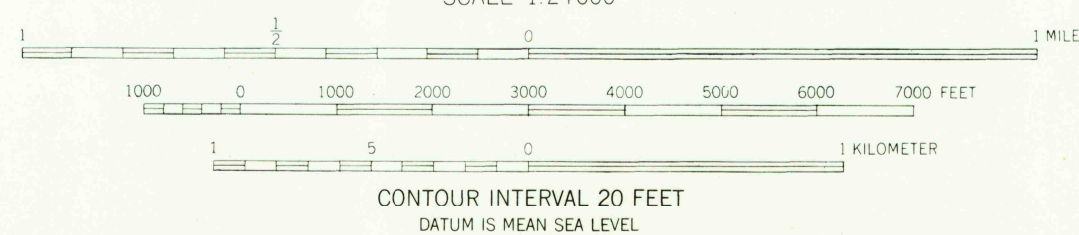
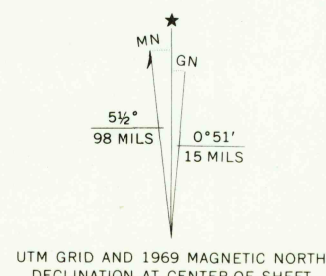


Mapped, edited, and published by the Geological Survey  
Control by USGS and USC&GS

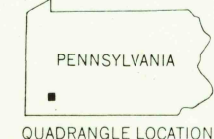
Topography from aerial photographs by multiplex methods  
Aerial photographs taken 1952. Field check 1954

Polyconic projection. 1927 North American datum  
10,000-foot grid based on Pennsylvania coordinate system, south zone  
1000-meter Universal Transverse Mercator grid ticks, zone 17,  
shown in blue

Revisions shown in purple compiled in cooperation with  
State of Pennsylvania agencies from aerial photographs taken 1969  
This information not field checked



USGS  
HISTORICAL FILE  
TOPOGRAPHIC DIVISION



ROAD CLASSIFICATION  
Heavy-duty ——— Light-duty ———  
Medium-duty ——— Unimproved dirt ———  
U.S. Route ——— State Route ———  
Interstate Route ———

U.S.G.S. SMITHTON, PA.  
NW/4 CONNELLSVILLE 15 QUADRANGLE  
N4007.5—W7937.5/7.5

FILE COPY  
TOPOGRAPHIC DIVISION  
1954  
PHOTOREVISED 1969  
MS 5064 II NW—SERIES V831

THIS MAP COMPLIES WITH NATIONAL MAP ACCURACY STANDARDS  
FOR SALE BY U.S. GEOLOGICAL SURVEY, WASHINGTON, D. C. 20242  
A FOLDER DESCRIBING TOPOGRAPHIC MAPS AND SYMBOLS IS AVAILABLE ON REQUEST

MAR 12 1970