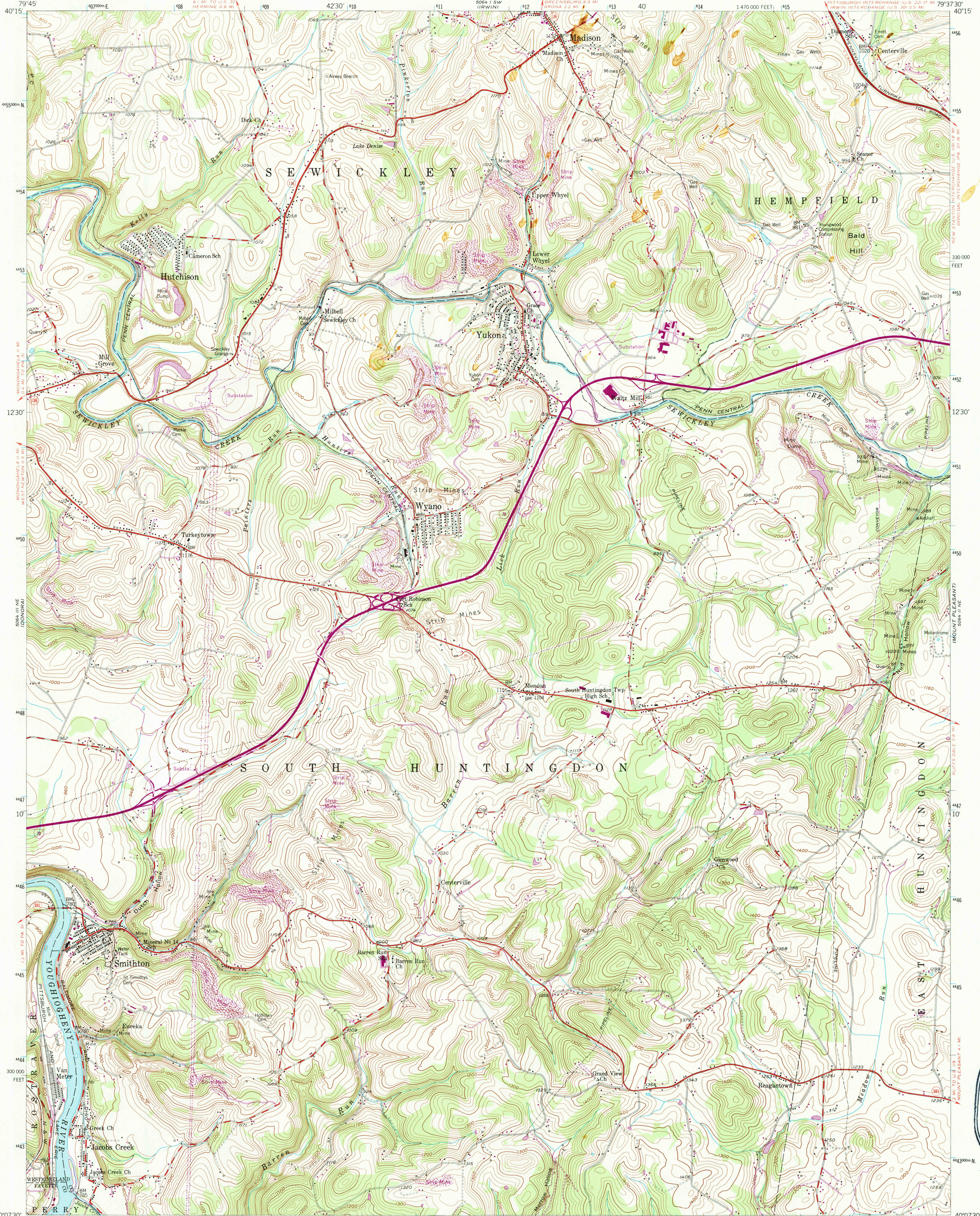


UNITED STATES
DEPARTMENT OF THE INTERIOR
GEOLOGICAL SURVEY

SMITHTON QUADRANGLE
PENNSYLVANIA
7.5 MINUTE SERIES (TOPOGRAPHIC)
NW/4 CONNELLSVILLE 15 QUADRANGLE



Mapped, edited, and published by the Geological Survey
Control by USGS and USCGS

Topography from aerial photographs by multiplex methods
Aerial photographs taken 1952. Field check 1954

Polycyclic projection. 1927 North American datum
10,000-foot grid based on Pennsylvania coordinate system, south zone
1000-meter Universal Transverse Mercator grid ticks, zone 17,
shown in blue

Revisions shown in purple compiled in cooperation with
State of Pennsylvania agencies from aerial photographs taken 1969
This information not field checked

Map photoinspected 1977
No major culture or drainage changes observed

THIS MAP COMPLIES WITH NATIONAL MAP ACCURACY STANDARDS
FOR SALE BY U. S. GEOLOGICAL SURVEY
DENVER, COLORADO 80225, OR RESTON, VIRGINIA 22092
A FOLDER DESCRIBING TOPOGRAPHIC MAPS AND SYMBOLS IS AVAILABLE ON REQUEST

ROAD CLASSIFICATION
Heavy-duty ——— Light-duty ———
Medium-duty ——— Unimproved dirt ———
U. S. Route ——— State Route ———
Interstate Route ———

SMITHTON, PA.
NW/4 CONNELLSVILLE 15 QUADRANGLE
N4007.5—W7937.5/7.5
1954
PHOTOINSPECTED 1977
PHOTOREVISED 1969
AMS 5064 II NW-SERIES V831