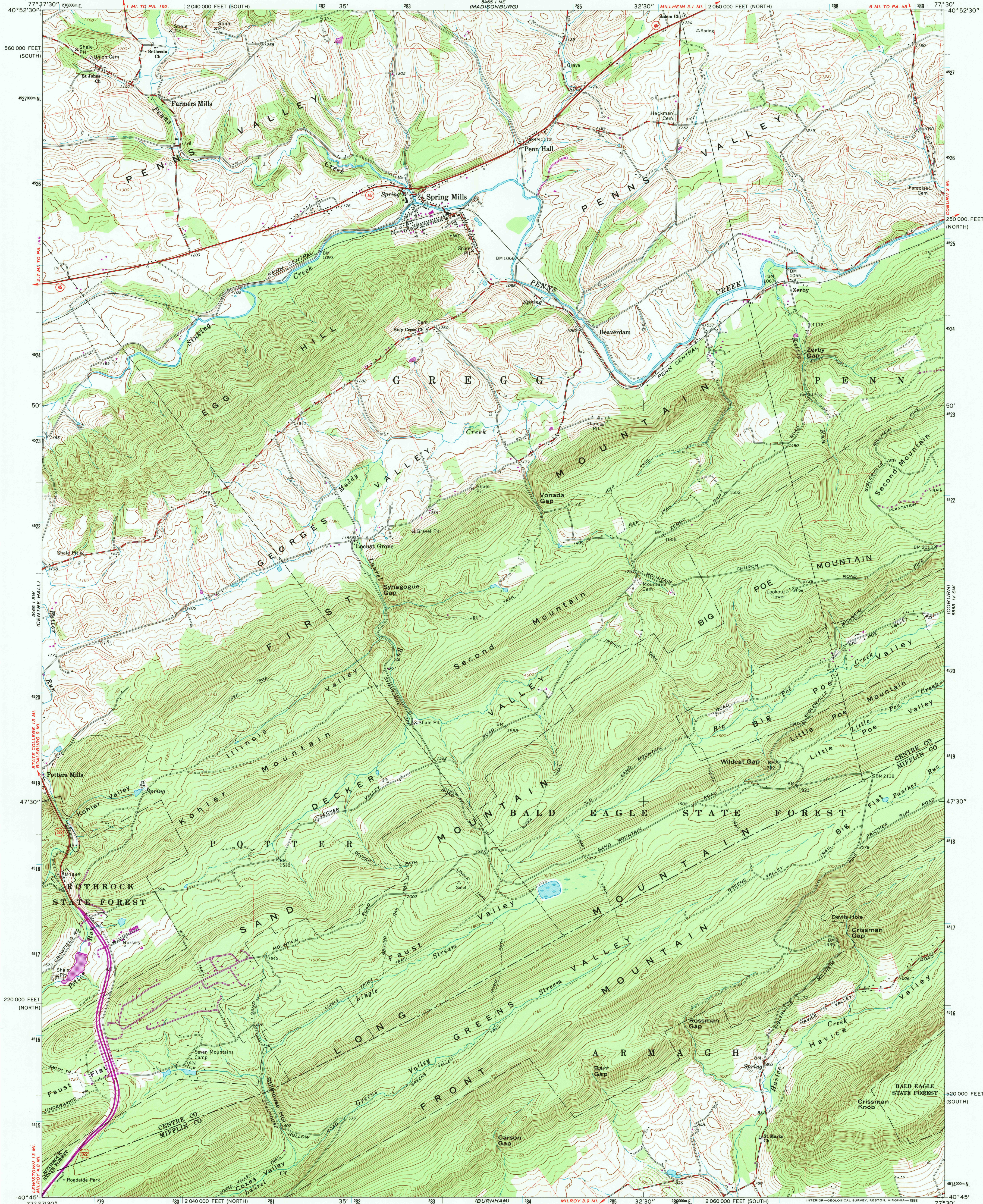


UNITED STATES
DEPARTMENT OF THE INTERIOR
GEOLOGICAL SURVEY

COMMONWEALTH OF PENNSYLVANIA
DEPARTMENT OF ENVIRONMENTAL RESOURCES
TOPOGRAPHIC AND GEOLOGIC SURVEY

SPRING MILLS QUADRANGLE
PENNSYLVANIA
7.5 MINUTE SERIES (TOPOGRAPHIC)



Mapped, edited, and published by the Geological Survey

Control by USGS and USC&GS

Topography by photogrammetric methods from aerial photographs taken 1964. Field checked 1966

Polyconic projection. 10,000-foot grid ticks based on Pennsylvania coordinate system, north and south zones 1000-meter Universal Transverse Mercator grid ticks, zone 18, shown in blue. 1927 North American Datum. To place on the North American Datum 1983 move the projection lines 5 meters south and 25 meters west as shown by dashed corner ticks

Fine red dashed lines indicate selected fence and field lines where generally visible on aerial photographs. This information is unchecked. There may be private inholdings within the boundaries of the National or State reservations shown on this map

Revisions shown in purple compiled in cooperation with Commonwealth of Pennsylvania agencies from aerial photographs taken 1973. This information not field checked

UTM GRID and 1973 MAGNETIC NORTH DECLINATION AT CENTER OF SHEET

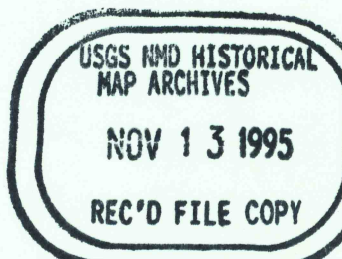
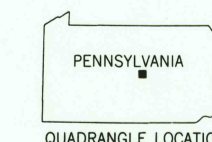
Map photoinspected 1984
No major culture or drainage changes observed

SCALE 1:24,000
1 0 1000 2000 3000 4000 5000 6000 7000 FEET
1 KILOMETER

CONTOUR INTERVAL 20 FEET
NATIONAL GEODETIC VERTICAL DATUM OF 1929

THIS MAP COMPLIES WITH NATIONAL MAP ACCURACY STANDARDS
FOR SALE BY U.S. GEOLOGICAL SURVEY
DENVER, COLORADO 80225, OR RESTON, VIRGINIA 22092
A FOLDER DESCRIBING TOPOGRAPHIC MAPS AND SYMBOLS IS AVAILABLE ON REQUEST

ROAD CLASSIFICATION
Heavy-duty Light-duty
Medium-duty Unimproved dirt
U.S. Route State Route



SPRING MILLS, PA.

40077-G5-TF-024
PHOTOINSPECTED 1984
1966
PHOTOREVISED 1973
DMA 5465 I SE-SERIES V831

