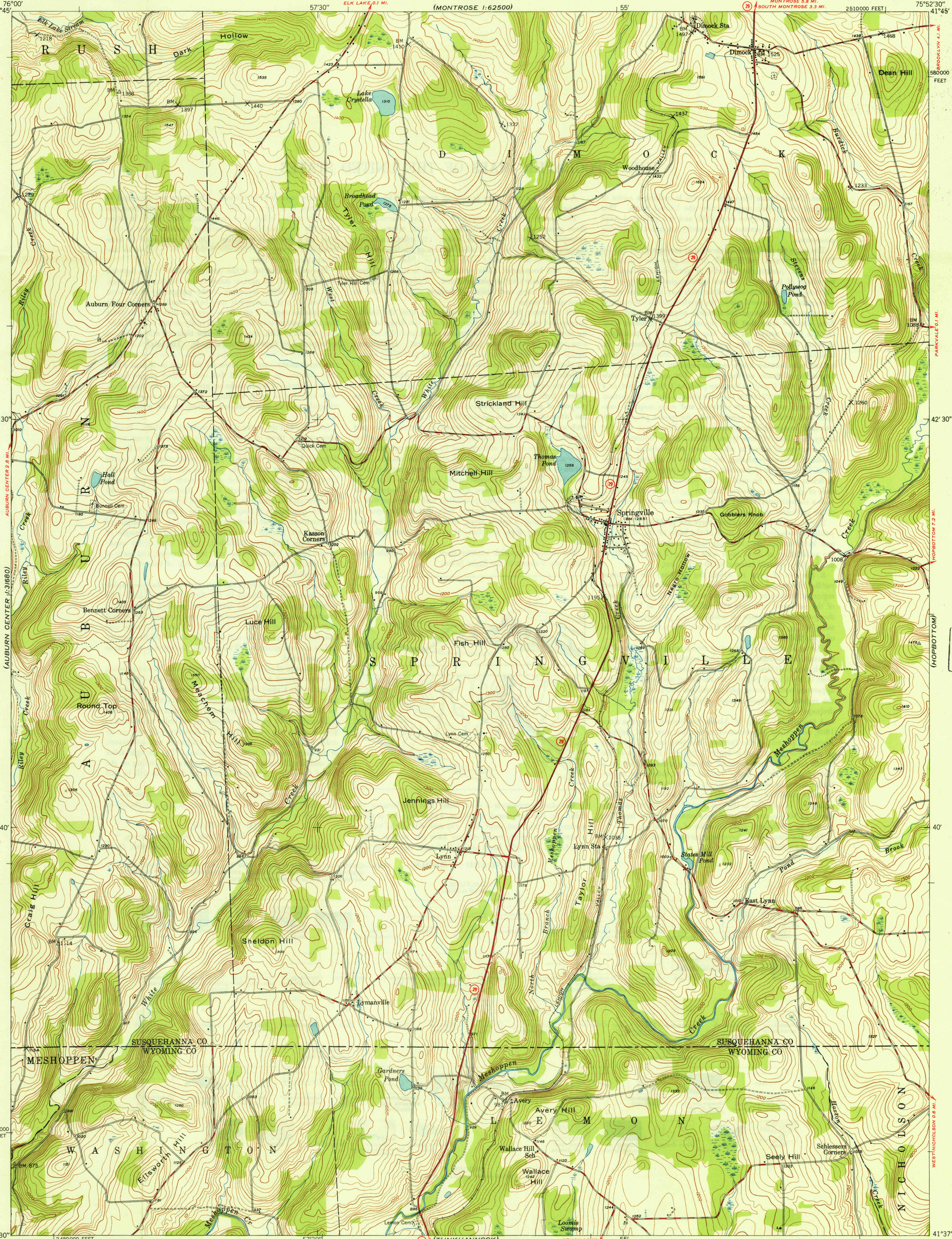


(MONTROSE 1:62500)

(MONTROSE)
1:62500

U.S.G.S.
FILE COPY
Inspection and Editing.

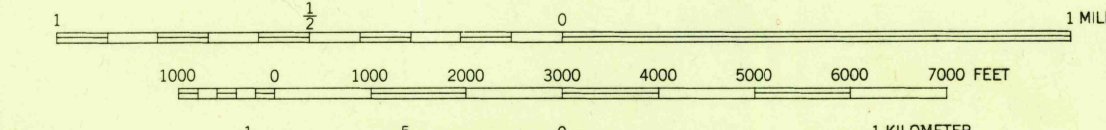
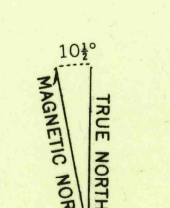
U.S.G.S.
FILE COPY
Inspection and Editing.



Mapped, edited, and published by the Geological Survey
Control by USGS and USC & GS

Topography from aerial photographs by multiplex methods
Aerial photographs taken 1942. Field check, 1946

Polyconic projection. 1927 North American datum
10000-foot grid based on Pennsylvania coordinate system, North zone



CONTOUR INTERVAL 20 FEET
DATUM IS MEAN SEA LEVEL

USGS
HISTORICAL FILE
TOPOGRAPHIC DIVISION

ROAD CLASSIFICATION

| | |
|--------------------------------------|-------------------|
| HARD-SURFACE ALL WEATHER ROADS | DRY WEATHER ROADS |
| Heavy-duty <u>4 LANE 6 LANE</u> | Improved dirt |
| Medium-duty <u>2 LANE 4 LANE</u> | Unimproved dirt |
| Loose-surface or narrow hard-surface | |

U.S.G.S.
FILE COPY
Inspection and Editing.

SPRINGVILLE, PA.
N4137.5-W7552.5/7.5

PRINTED 1948