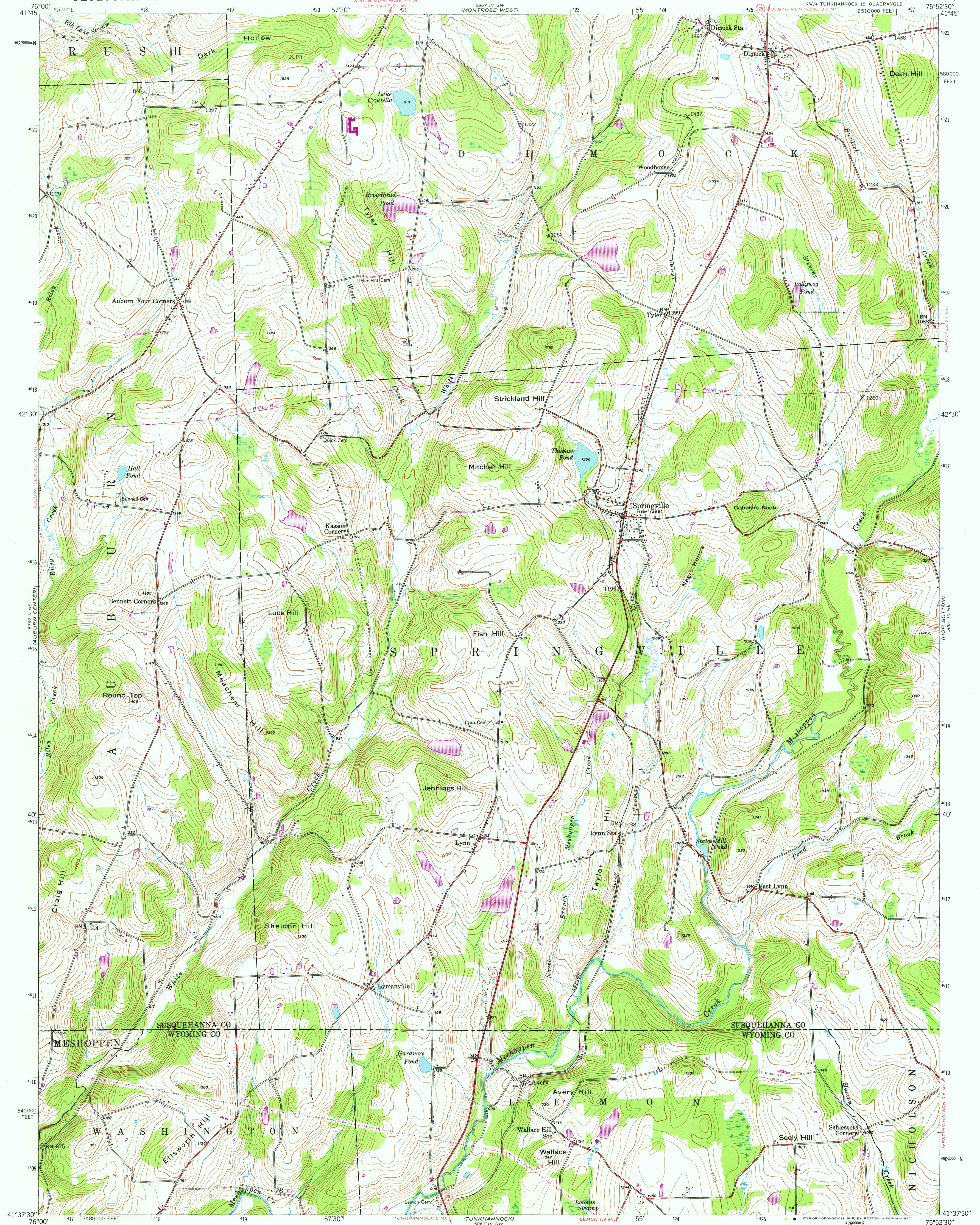


UNITED STATES  
DEPARTMENT OF THE INTERIOR  
GEOLOGICAL SURVEY

SPRINGVILLE QUADRANGLE  
PENNSYLVANIA  
7.5 MINUTE SERIES (TOPOGRAPHIC)

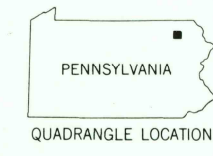
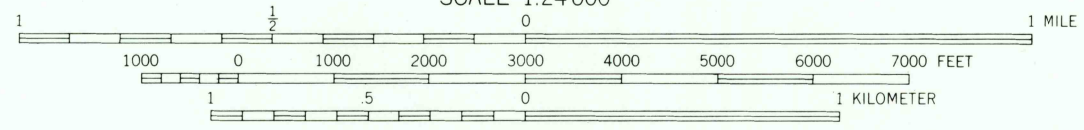
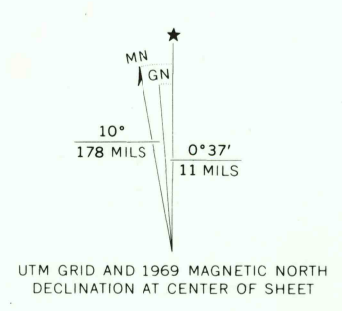


Mapped, edited, and published by the Geological Survey  
Control by USGS and USC & GS

Topography from aerial photographs by multiplex methods  
Aerial photographs taken 1942. Field check, 1946

Polycyclic projection. 1927 North American datum  
10000 foot grid based on Pennsylvania coordinate  
system, North Zone  
1000-meter Universal Transverse Mercator grid ticks,  
zone 18, shown in blue

Revisions shown in purple compiled in cooperation with  
State of Pennsylvania agencies from aerial photographs taken 1969  
This information not field checked



ROAD CLASSIFICATION

Heavy-duty	Light-duty
Medium-duty	Unimproved dirt
State Route	

USGS  
Historical File  
Topographic Division

SPRINGVILLE, PA.  
NW 1/4 TUNKHANNOCK 15 QUADRANGLE  
N4137.5-W7552.5/7.5

1946  
PHOTOREVISED 1969  
AMS 5867 III NW-SERIES V831

MAY 23 1977  
3,800