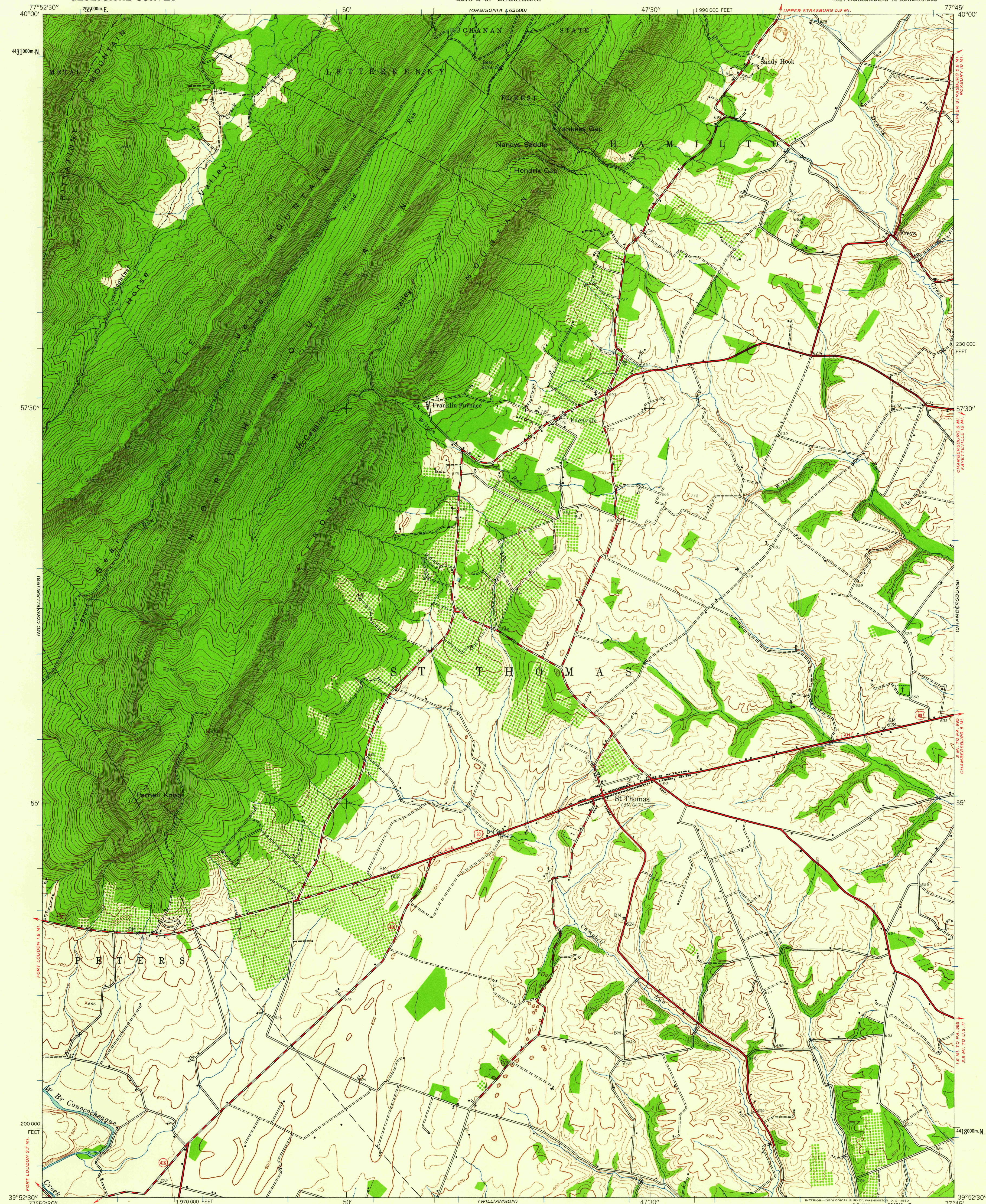


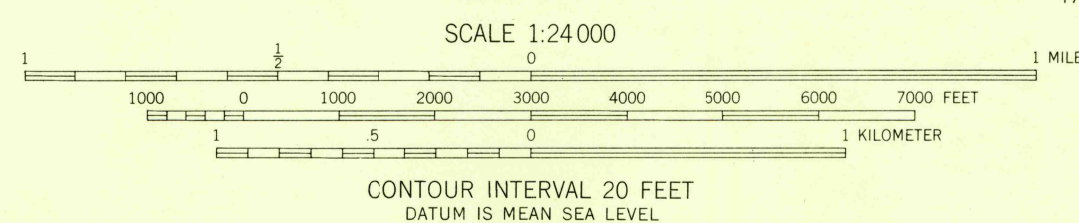
(ORRISONIA 1:62500)

(GREENCASTLE 1:62500)



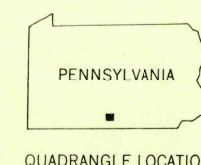
Mapped by the Army Map Service
Published for civil use by the Geological Survey
Control by USGS, USC&GS, and USFS
Topography from aerial photographs by photogrammetric methods
Aerial photographs taken 1943. Field check 1944
Polyconic projection. 1927 North American datum
10,000-foot grid based on Pennsylvania coordinate system, south zone
1000-meter Universal Transverse Mercator grid ticks,
zone 18, shown in blue

APPROXIMATE MEAN
DECLINATION, 1944



THIS MAP COMPLIES WITH NATIONAL MAP ACCURACY STANDARDS
FOR SALE BY U. S. GEOLOGICAL SURVEY, WASHINGTON 25, D. C.
A FOLDER DESCRIBING TOPOGRAPHIC MAPS AND SYMBOLS IS AVAILABLE ON REQUEST

USGS
HISTORICAL FILE
TOPOGRAPHIC DIVISION



QUADRANGLE LOCATION

ROAD CLASSIFICATION
Heavy-duty ——— Light-duty ———
Medium-duty ——— Unimproved dirt ———
U. S. Route —○— State Route —○—

ST. THOMAS, PA.
NE/4 MERCEBURG 15' QUADRANGLE
N3952.5—W7745/7.5

1944

U.S.G.S.
FILE COPY
TOPOGRAPHIC DIVISION

OCT 21 1960

2445