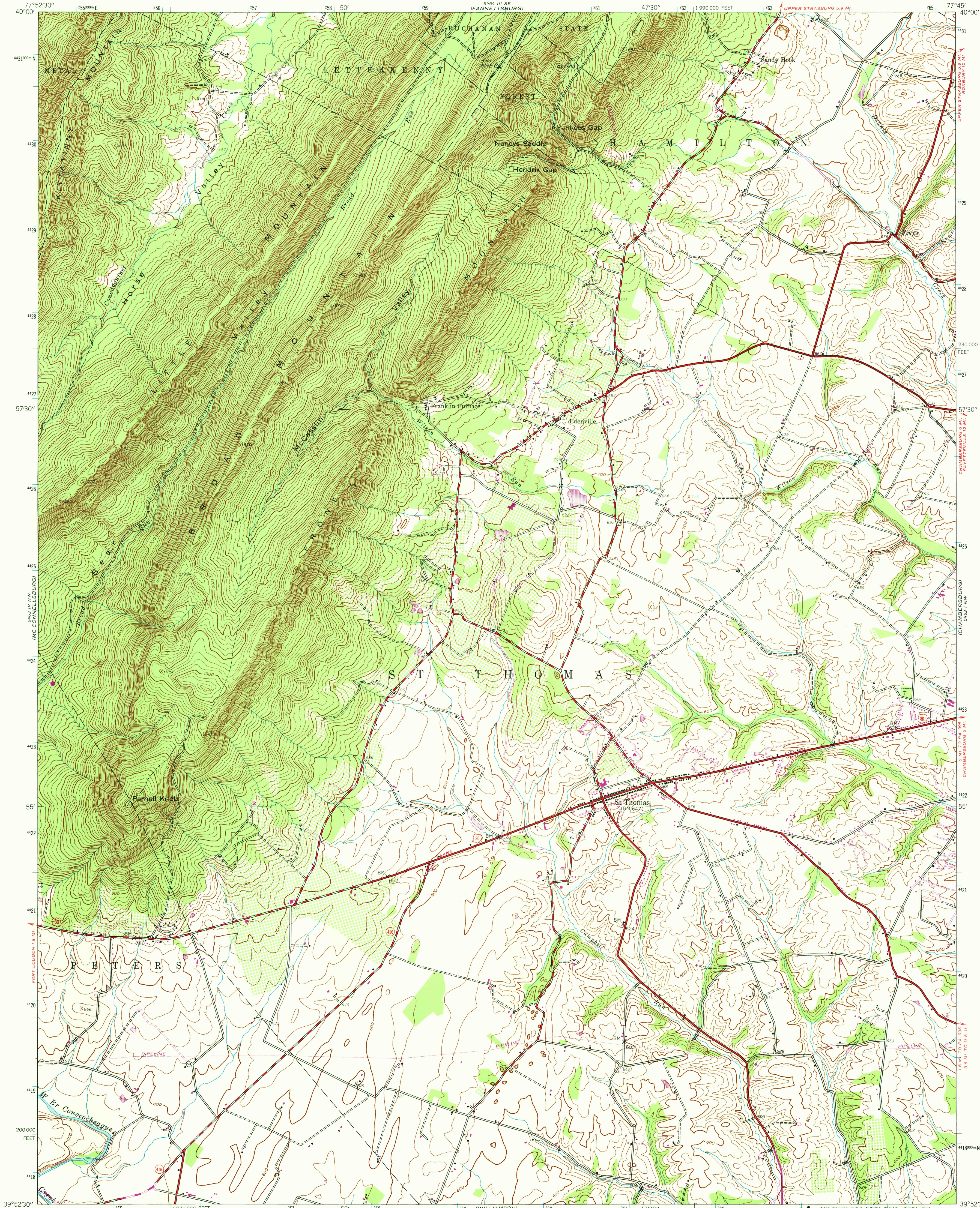


UNITED STATES
DEPARTMENT OF THE INTERIOR
GEOLOGICAL SURVEY

ST. THOMAS QUADRANGLE
PENNSYLVANIA—FRANKLIN CO.
7.5 MINUTE SERIES (TOPOGRAPHIC)



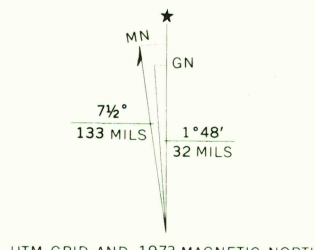
Mapped by the Army Map Service
Published for civil use by the Geological Survey

Control by USGS, USC&GS, and USFS

Topography from aerial photographs by photogrammetric methods
Aerial photographs taken 1943. Field check 1944

Polyconic projection. 1927 North American datum
10,000-foot grid based on Pennsylvania coordinate system, south zone
1000-meter Universal Transverse Mercator grid ticks,
zone 18, shown in blue

Revisions shown in purple compiled by Geological Survey in
cooperation with State of Pennsylvania agencies, from aerial
photographs taken 1968 and 1973. This information not field checked



SCALE 1:24,000
CONTOUR INTERVAL 20 FEET
DATUM IS MEAN SEA LEVEL

THIS MAP COMPLIES WITH NATIONAL MAP ACCURACY STANDARDS
FOR SALE BY U.S. GEOLOGICAL SURVEY, RESTON, VIRGINIA 22092
A FOLDER DESCRIBING TOPOGRAPHIC MAPS AND SYMBOLS IS AVAILABLE ON REQUEST



ROAD CLASSIFICATION
Heavy-duty ——— Light-duty ———
Medium-duty ——— Unimproved dirt ———
U.S. Route ——— State Route ———

USGS
Historical File
Topographic Division

ST. THOMAS, PA.

N3952.5—W7745/7.5
1944

PHOTOREVISED 1968 AND 1973
AMS 5463 IV NE—SERIES V831

AUG 13 1974

3350