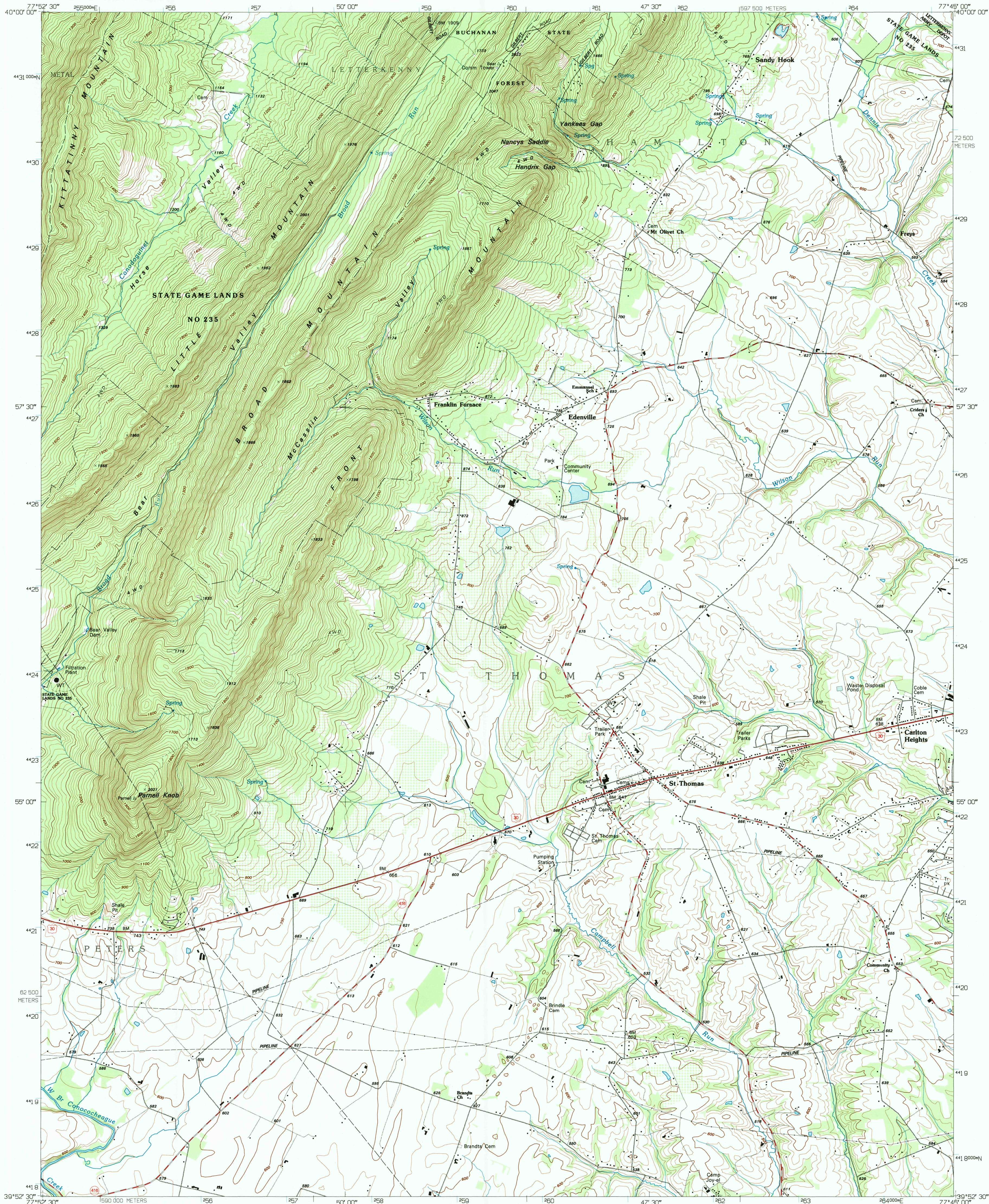
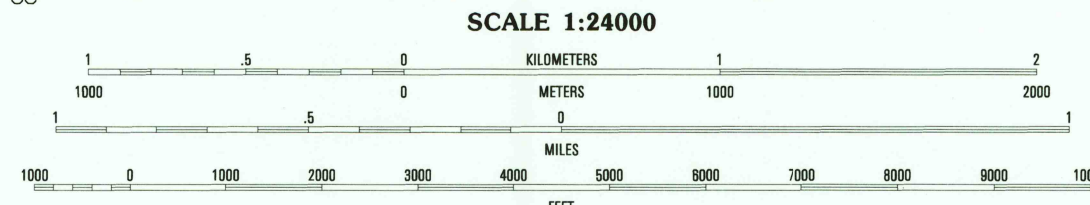
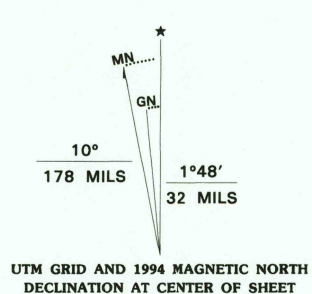


UNITED STATES  
DEPARTMENT OF THE INTERIOR  
GEOLOGICAL SURVEY

ST. THOMAS QUADRANGLE  
PENNSYLVANIA-FRANKLIN CO.  
7.5 MINUTE SERIES (TOPOGRAPHIC)

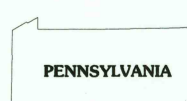


Produced by the United States Geological Survey  
Compiled from imagery date 1988-1989 and other sources  
Field checked 1990. Map edited 1994  
North American Datum of 1983 (NAD 83). Projection and  
blue 1000-meter ticks: Universal Transverse Mercator, zone 18  
2 500-meter ticks: Pennsylvania Coordinate System of 1983, south zone  
North American Datum of 1927 (NAD 27) is shown by dashed  
corner ticks. The values of the shift between NAD 83 and NAD 27  
for 7.5-minute intersections are obtainable from National Geodetic  
Survey NADCON software  
There may be private inholdings within the boundaries of  
the National or State reservations shown on this map



CONTOUR INTERVAL 20 FEET  
NATIONAL GEODETIC VERTICAL DATUM OF 1929

THIS MAP COMPLIES WITH NATIONAL MAP ACCURACY STANDARDS  
FOR SALE BY U.S. GEOLOGICAL SURVEY  
DENVER, COLORADO 80225, OR RESTON, VIRGINIA 22092  
A FOLDER DESCRIBING TOPOGRAPHIC MAPS AND SYMBOLS IS AVAILABLE ON REQUEST



QUADRANGLE LOCATION

1	2	3	1 Burnt Cabins
4	5	6	2 Fannetsburg
7	8	7	3 Rosbury
		8	4 McConnellsburg
			5 Chambersburg
			6 Mercersburg
			7 Williamson
			8 Greencastle

ADJOINING 7.5' QUADRANGLE NAMES

ROAD CLASSIFICATION

Primary highway  
hard surface .....  
Secondary highway  
hard surface .....  
Light-duty road, hard or  
improved surface .....  
Unimproved road .....

Interstate Route U.S. Route State Route

ST. THOMAS, PA  
39077-H7-TF-024

1990

DMA 5463 IV NE - SERIES V831

