

UNITED STATES
DEPARTMENT OF THE INTERIOR
GEOLOGICAL SURVEY

STEWARTSTOWN QUADRANGLE
PENNSYLVANIA—YORK CO.
7.5 MINUTE SERIES (TOPOGRAPHIC)

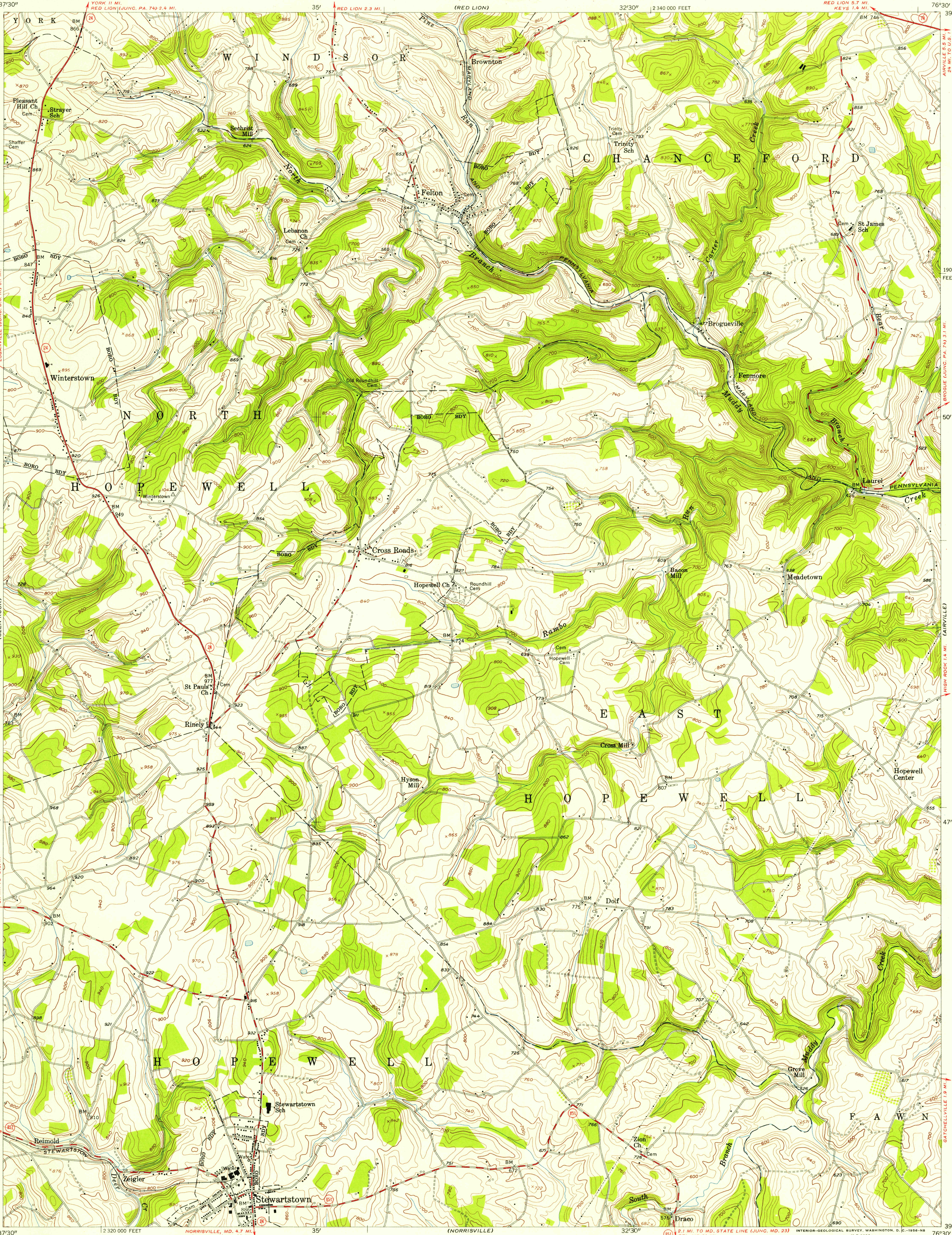
SE 1/4 YORK 15' QUADRANGLE
RED LION 5.7 MI.
KEYS 1.4 MI.

(SAFE HARBOR)

U.S.G.S.
FILE COPY
TOPOGRAPHIC DIVISION

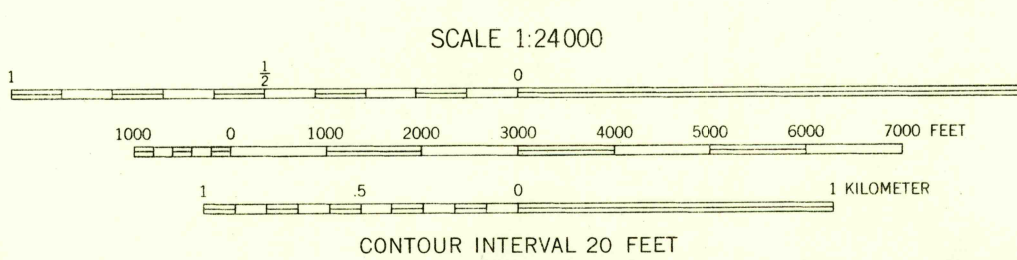
U.S.G.S.
FILE COPY
TOPOGRAPHIC DIVISION

U.S.G.S.
FILE COPY
TOPOGRAPHIC DIVISION

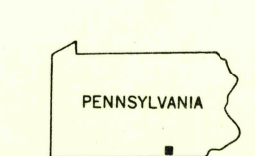


Mapped, edited, and published by the Geological Survey
Control by USGS and USC&GS
Topography from aerial photographs by photogrammetric
methods. Aerial photographs taken 1952. Field check 1953
Polyconic projection. 1927 North American datum
10,000-foot grid based on Pennsylvania coordinate system,
south zone
Unchecked elevations are shown in brown

TRUE NORTH
MAGNETIC NORTH
APPROXIMATE MEAN
DECLINATION, 1953



USGS
HISTORICAL FILE
TOPOGRAPHIC DIVISION



ROAD CLASSIFICATION
Heavy-duty ——— Light-duty ———
Medium-duty ——— Unimproved dirt ———
U. S. Route ——— State Route ———

STEWARTSTOWN, PA.
SE 1/4 YORK 15' QUADRANGLE
N 3945-W 7630/7.5

1953

NOV 4 1956