

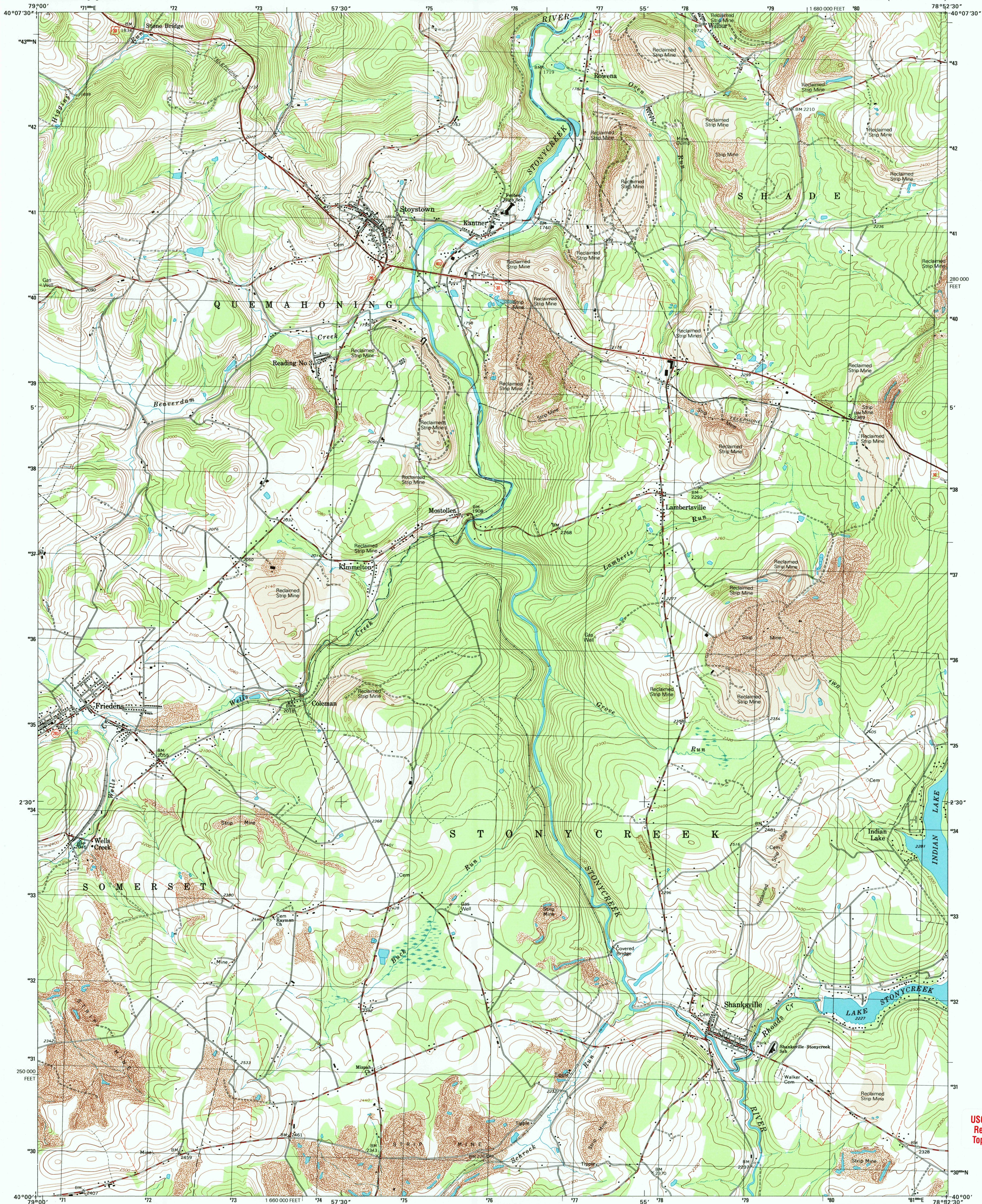


U.S. DEPARTMENT OF THE INTERIOR
U.S. GEOLOGICAL SURVEY

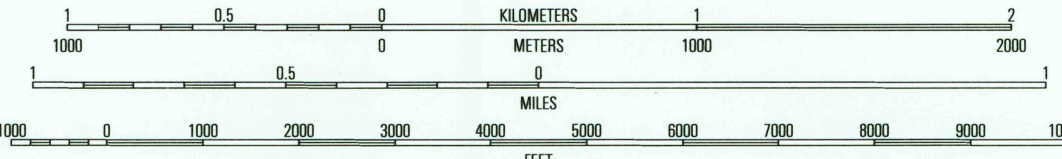
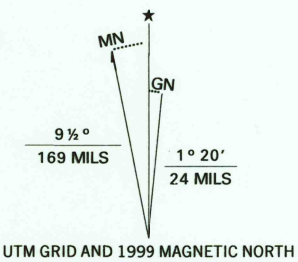


COMMONWEALTH OF PENNSYLVANIA
DEPARTMENT OF CONSERVATION AND NATURAL RESOURCES
BUREAU OF TOPOGRAPHIC AND GEOLOGIC SURVEY

STOYSTOWN QUADRANGLE
PENNSYLVANIA-SOMERSET CO.
7.5-MINUTE SERIES (TOPOGRAPHIC)



Produced by the United States Geological Survey
in cooperation with Pennsylvania Department of Conservation
and Natural Resources, Bureau of Topographic and Geologic Survey
Derived from imagery taken 1988 and other sources. Photoinspected
using imagery taken 1994; no major culture or drainage changes
observed. Survey control current as of 1971.
Boundaries, other than corporate verified 1999
North American Datum of 1927 (NAD 27). Projection and
10 000-foot ticks: Pennsylvania coordinate system, south zone
(Lambert conformal conic)
1000-meter Universal Transverse Mercator grid, zone 17
North American Datum of 1983 (NAD 83) is shown by dashed
corner ticks. The values of the shift between NAD 27 and NAD 83
for 7.5-minute intersections are obtainable from National Geodetic
Survey NADCON software
Contours in strip mine areas may not accurately represent
present topography
Light brown tint indicates reclaimed strip mine areas



CONTOUR INTERVAL 20 FEET
NATIONAL GEODETIC VERTICAL DATUM OF 1929
TO CONVERT FROM FEET TO METERS, MULTIPLY BY 0.3048

THIS MAP COMPLIES WITH NATIONAL MAP ACCURACY STANDARDS
FOR SALE BY U.S. GEOLOGICAL SURVEY, P.O. BOX 25286, DENVER, COLORADO 80225
A FOLDER DESCRIBING TOPOGRAPHIC MAPS AND SYMBOLS IS AVAILABLE ON REQUEST



ROAD CLASSIFICATION
Primary highway
hard surface
Secondary highway
hard surface
Light-duty road, hard or
improved surface
Unimproved road
Interstate Route
U.S. Route
State Route

1	2	3	1 Bowell
			2 Howersville
			3 Windber
4	5		4 Somerset
			5 Central City
			6 Murruck
6	7	8	7 Berin
			8 New Baltimore

APR 21 2005
STOYSTOWN, PA
1994
NIMA 5264 III SW-SERIES V831

USGS Library
Reston, VA.
Topo Archive

