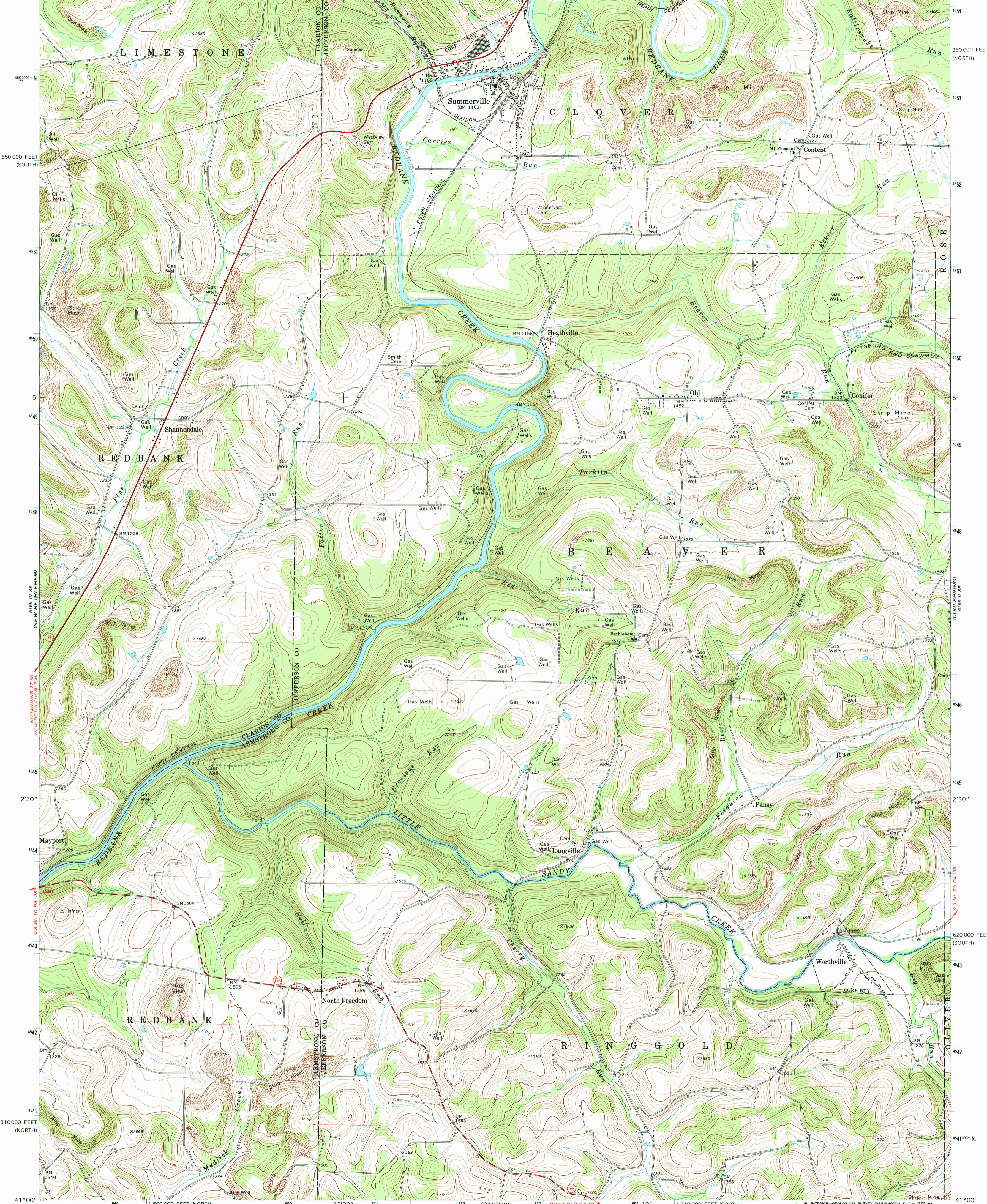
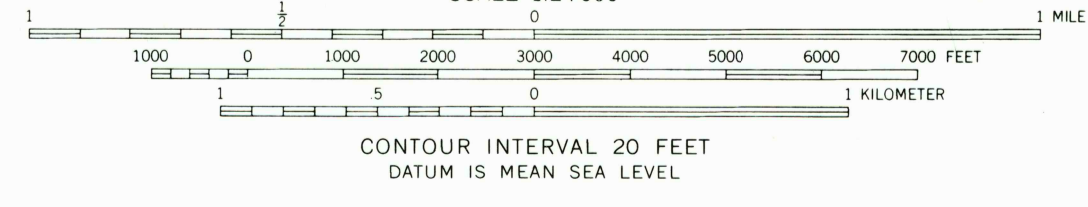
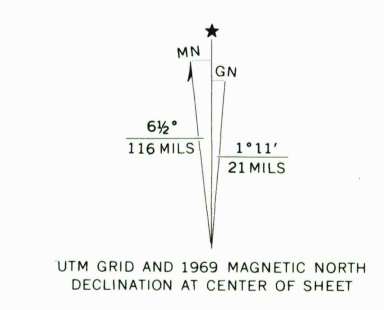


79° 15' 1 590 000 FEET (SOUTH) 4480000 E 49 12' 30" 156 11 NW (CORSIKA) BROOKVILLE 6 MI. 10' 154 655 79° 07' 30" 41° 07' 30" 1 620 000 FEET (NORTH) 516 11 NE (BROOKVILLE)



Mapped, edited, and published by the Geological Survey  
Control by USGS and USC&GS  
Topography by photogrammetric methods from aerial photographs taken 1957. Field checked 1969  
Polyconic projection. 1927 North American datum  
10,000-foot grids based on Pennsylvania coordinate system, north and south zones  
1000-meter Universal Transverse Mercator grid ticks, zone 17, shown in blue  
Fine red dashed lines indicate selected fence and field lines where generally visible on aerial photographs. This information is unchecked



ROAD CLASSIFICATION

Primary highway, hard surface	Light-duty road, hard or improved surface
Secondary highway, hard surface	Unimproved road
Interstate Route	U. S. Route
	State Route

QUADRANGLE LOCATION

THIS MAP COMPLIES WITH NATIONAL MAP ACCURACY STANDARDS  
FOR SALE BY U. S. GEOLOGICAL SURVEY, WASHINGTON, D. C. 20242  
A FOLDER DESCRIBING TOPOGRAPHIC MAPS AND SYMBOLS IS AVAILABLE ON REQUEST

SUMMERVILLE, PA.  
SW/4 BROOKVILLE 15' QUADRANGLE  
N4100-W7907.5/7.5  
1969  
AMS 5166 11 SW-SERIES V831

USGS AND HISTORICAL MAP ARCHIVES

7-19-84