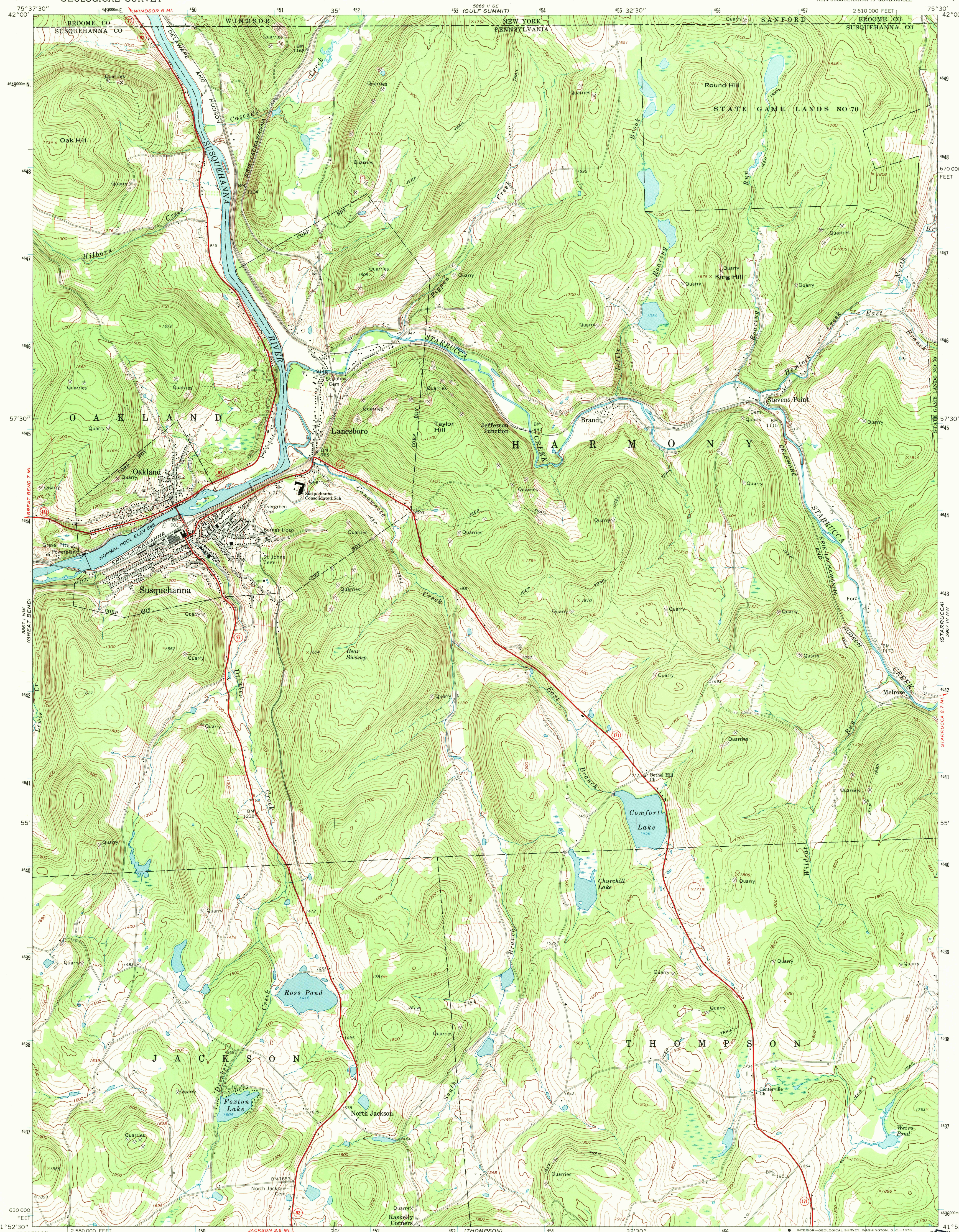


UNITED STATES
DEPARTMENT OF THE INTERIOR
GEOLOGICAL SURVEY

SUSQUEHANNA QUADRANGLE
PENNSYLVANIA-NEW YORK
7.5 MINUTE SERIES (TOPOGRAPHIC)
NE/4 SUSQUEHANNA 15' QUADRANGLE

1988 II SW
(DEPOSIT)

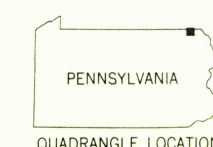


Mapped, edited, and published by the Geological Survey
Control by USGS and USC&GS
Topography by photogrammetric methods from aerial photographs
taken 1966. Field checked 1968
Polyconic projection. 1927 North American datum
10,000-foot grid based on Pennsylvania coordinate system, north zone
1000-meter Universal Transverse Mercator grid ticks,
zone 18, shown in blue
Fine red dashed lines indicate selected fence and field lines where
generally visible on aerial photographs. This information is unchecked

UTM GRID AND 1968 MAGNETIC NORTH
DECLINATION AT CENTER OF SHEET

SCALE 1:24,000
CONTOUR INTERVAL 20 FEET
DATUM IS MEAN SEA LEVEL

USGS
HISTORICAL FILE
TOPOGRAPHIC DIVISION



ROAD CLASSIFICATION
Primary highway, all weather, Light-duty road, all weather
hard surface improved surface
Unimproved road, fair or dry
weather
State Route

SUSQUEHANNA, PA. - N. Y.
NE/4 SUSQUEHANNA 15' QUADRANGLE
N4152.5-W7530.7.5

1968

AMS 5867 1 NE-SERIES V831

U.S.G.S.
FILE COPY
TOPOGRAPHIC DIVISION

3436

DEC 22 1970

THIS MAP COMPLIES WITH NATIONAL MAP ACCURACY STANDARDS
FOR SALE BY U.S. GEOLOGICAL SURVEY, WASHINGTON, D. C. 20242
A FOLDER DESCRIBING TOPOGRAPHIC MAPS AND SYMBOLS IS AVAILABLE ON REQUEST