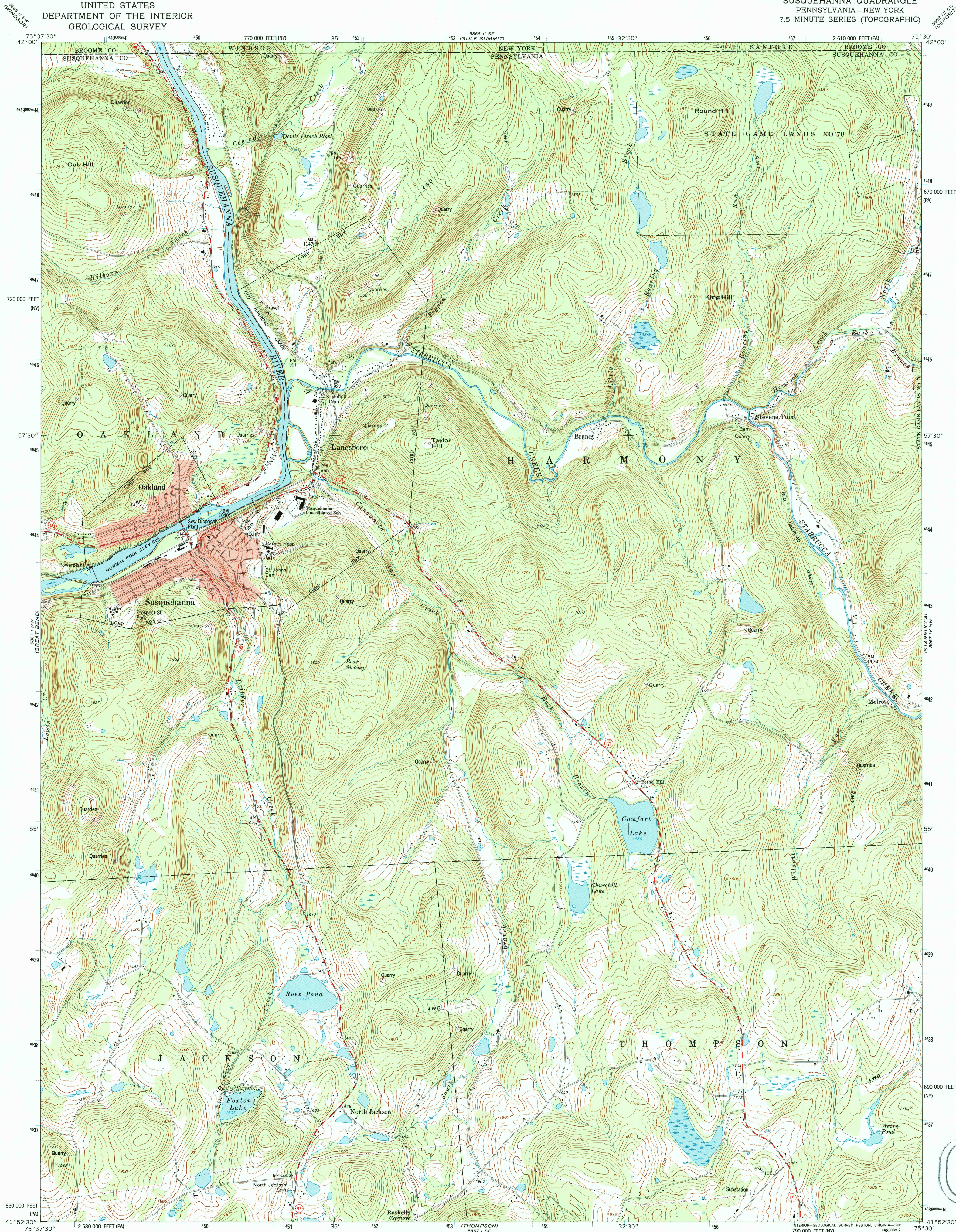
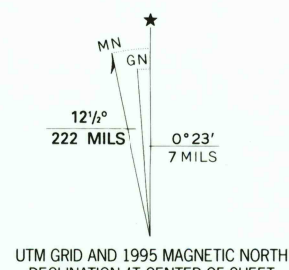


UNITED STATES
DEPARTMENT OF THE INTERIOR
GEOLOGICAL SURVEY

SUSQUEHANNA QUADRANGLE
PENNSYLVANIA—NEW YORK
7.5 MINUTE SERIES (TOPOGRAPHIC)



Produced by the United States Geological Survey
in cooperation with Commonwealth of Pennsylvania agencies
Compiled by photogrammetric methods from imagery dated 1966
Field checked 1968. Revised from imagery dated 1992
and other sources. Field checked 1994. Map edited 1995
North American Datum of 1927 (NAD 27)
Projection: Pennsylvania coordinate system, north zone
(Lambert conformal conic)
10 000-foot ticks: Pennsylvania coordinate system, north zone and
New York coordinate system, central zone
Blue 1000-meter Universal Transverse Mercator ticks, zone 18
North American Datum of 1983 (NAD 83) is shown by dashed
corner ticks. The values of the shift between NAD 27 and NAD 83
for 7.5-minute intersections are obtainable from National Geodetic
Survey NADCON software
There may be private inholdings within the boundaries of
the National or State reservations shown on this map



SCALE 1:24 000
CONTOUR INTERVAL 20 FEET
NATIONAL GEODETIC VERTICAL DATUM OF 1929

THIS MAP COMPLIES WITH NATIONAL MAP ACCURACY STANDARDS
FOR SALE BY U.S. GEOLOGICAL SURVEY
DENVER, COLORADO 80225, OR RESTON, VIRGINIA 22092
A FOLDER DESCRIBING TOPOGRAPHIC MAPS AND SYMBOLS IS AVAILABLE ON REQUEST



ROAD CLASSIFICATION
Primary highway, hard surface
Secondary highway, hard surface
Light-duty road, hard or improved surface
Unimproved road
Interstate Route
U. S. Route
State Route

SUSQUEHANNA, PA-NY
41075-H5-TF-024
1994

DMA 5867 1 NE-SERIES V831

