

(CONRAD)  
77°52'30"  
41°30'

50'

(SHORT RUN)

47'30"

1990000 FEET

77°45'  
41°30'

(OLEONA)

U.S.G.S.  
FILE COPY  
TOPOGRAPHIC DIVISION

480000  
FEET

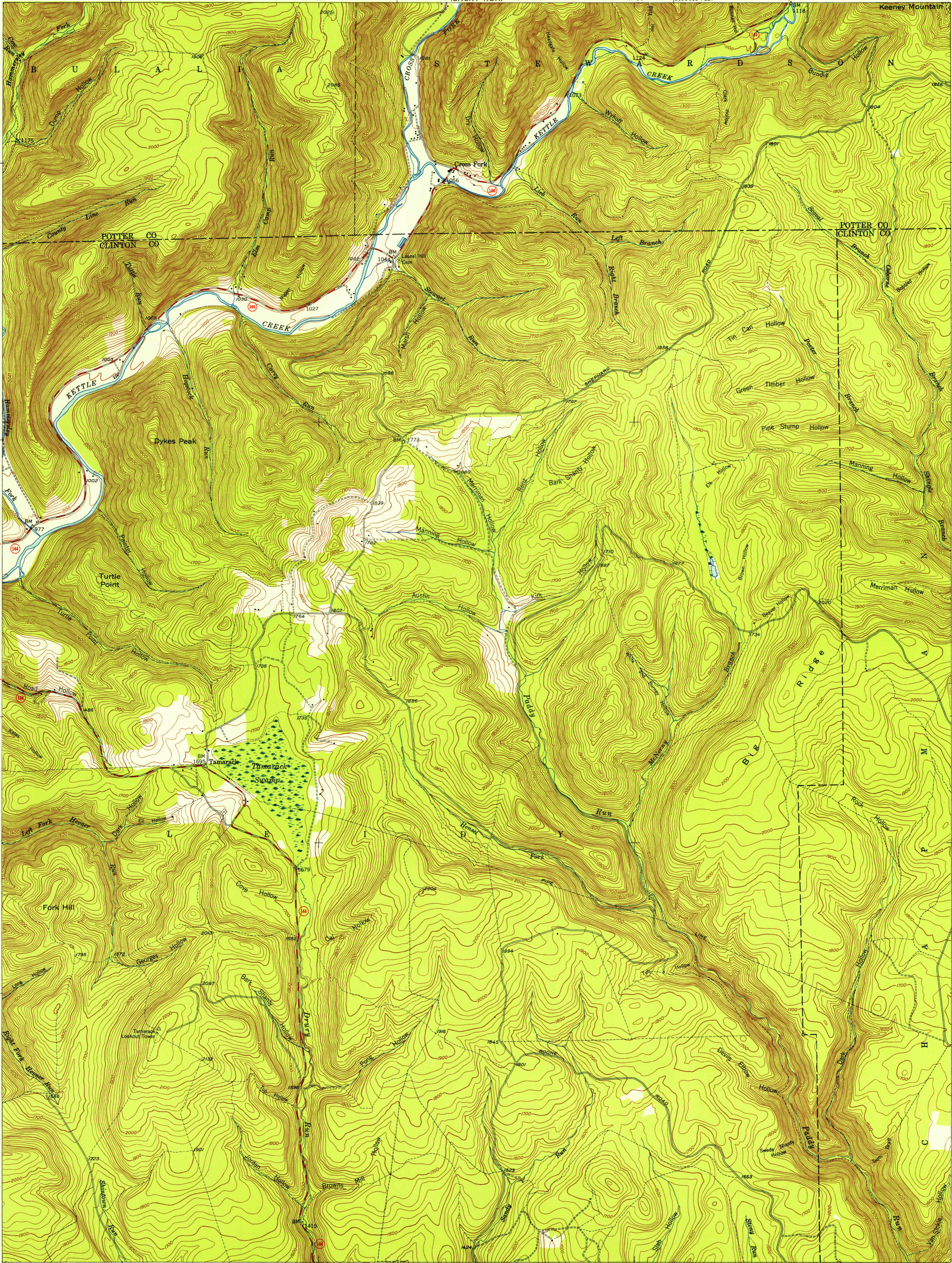
27'30"

25'

41°22'30"

77°45'

(RENOVO EAST)



WESTPORT QUAD. U.S. 60 15 MI.  
HAMMERSLEY FORK 5.9 MI.  
HAMMERSLEY FORK

450000  
FEET

41°22'30"

77°52'30"

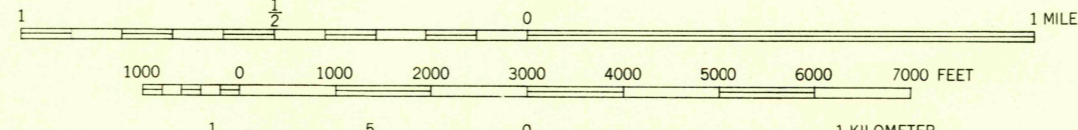
(KEATING)

Mapped, edited, and published by the Geological Survey  
Control by USGS and USC&GS  
Topography from aerial photographs by multiplex methods  
Aerial photographs taken 1944 Field check, 1946  
Polyconic projection. 1927 North American datum  
10 000-foot grid based on Pennsylvania coordinate system,  
north zone

DRURY RUN (JUNC. U.S. 120) 4.8 MI.  
RENOVO 6.1 MI.

(RENOVO WEST)  
SCALE 1:24000

INTERIOR—GEOLOGICAL SURVEY, WASHINGTON, D. C.—1955



CONTOUR INTERVAL 20 FEET  
DATUM IS MEAN SEA LEVEL

ROAD CLASSIFICATION  
Heavy-duty ——— 4 LANE 6 LANE Light-duty ———  
Medium-duty - - - 4 LANE 6 LANE Unimproved dirt - - -  
U. S. Route State Route

8°  
TRUE NORTH  
MAGNETIC NORTH  
APPROXIMATE MEAN  
DECLINATION, 1946

THIS MAP COMPLIES WITH NATIONAL MAP ACCURACY STANDARDS

FOR SALE BY U. S. GEOLOGICAL SURVEY, WASHINGTON 25, D. C.  
A FOLDER DESCRIBING TOPOGRAPHIC MAPS AND SYMBOLS IS AVAILABLE ON REQUEST

USGS  
HISTORICAL FILE  
TOPOGRAPHIC DIVISION

TAMARACK, PA.  
N4122.5—W7745/7.5

1946

U.S.G.S.  
FILE COPY  
TOPOGRAPHIC DIVISION

FEB 9 1955

4775