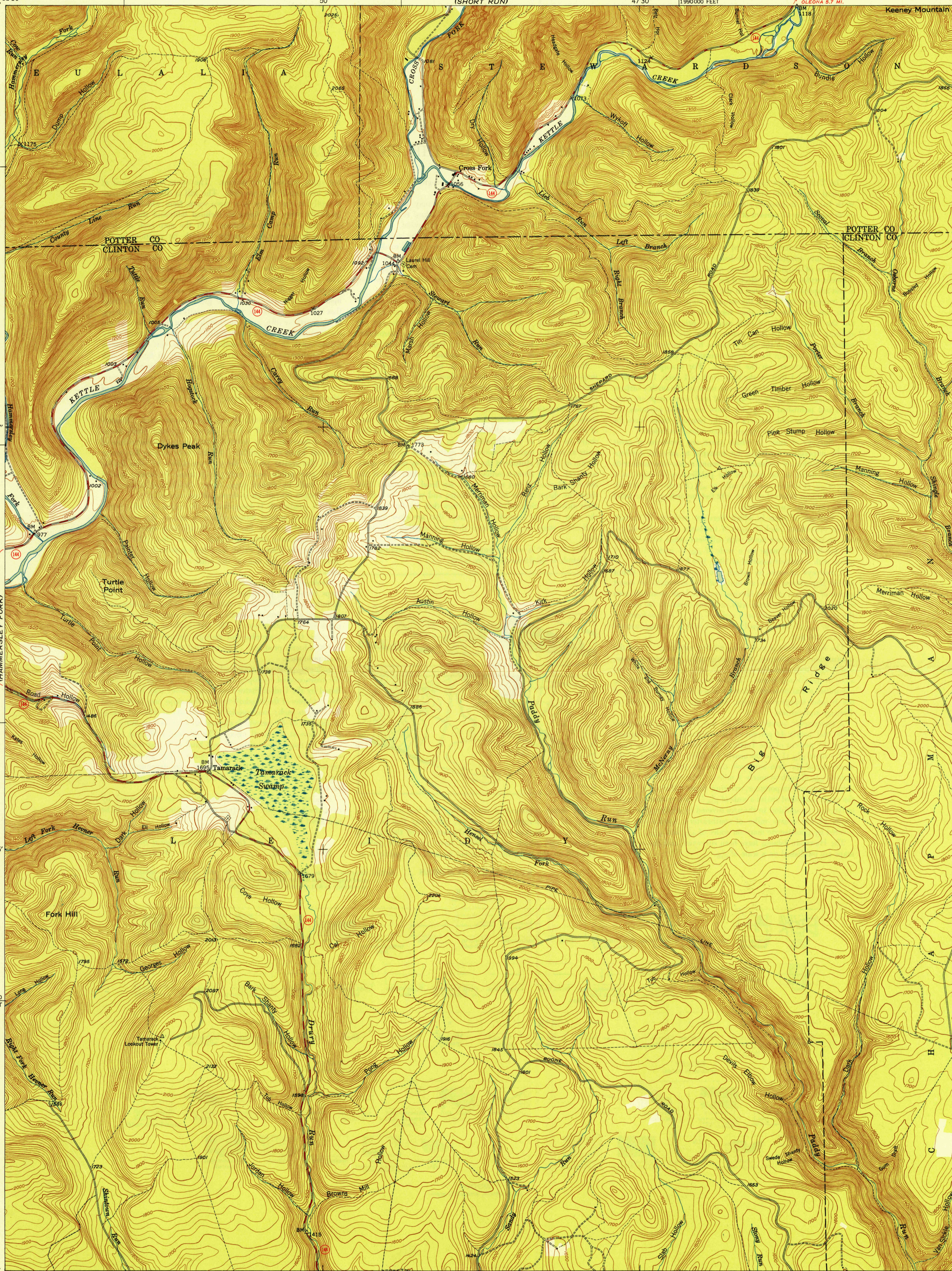


(COVERED)
77°52'30"
41°30'

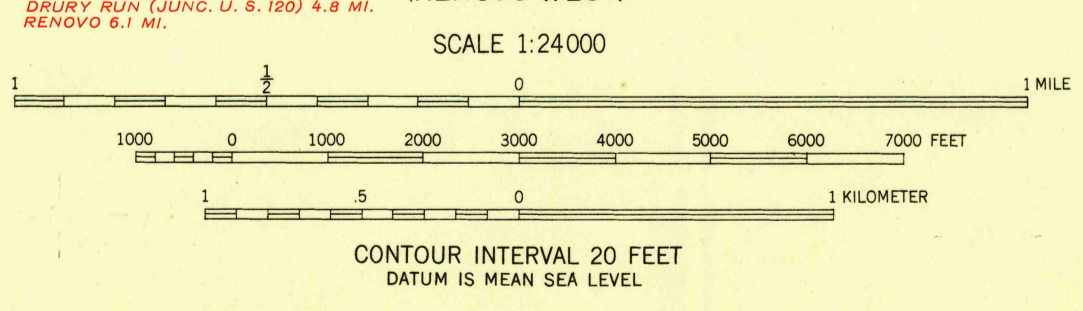
(OLEONA)
77°45'
41°30'



U. S. G. S.
FILE COPY
Inspection and Printing

U. S. G. S.
FILE COPY
Inspection and Printing

Mapped, edited, and published by the Geological Survey
Control by USGS and USC&GS
Topography from aerial photographs by multiplex methods
Aerial photographs taken 1944 Field check, 1946
Polyconic projection. 1927 North American datum
10 000-foot grid based on Pennsylvania coordinate system,
north zone



USGS
HISTORICAL FILE
TOPOGRAPHIC DIVISION

ROAD CLASSIFICATION	
HARD-SURFACE ALL WEATHER ROADS	DRY WEATHER ROADS
Heavy-duty... 4 LANE LANE	Improved dirt...
Medium-duty... 4 LANE LANE	Unimproved dirt...
Loose-surface, graded, or narrow hard-surface...	
U. S. Route	State Route

U. S. G. S.
FILE COPY
Inspection and Printing

TAMARACK, PA.
N4122.5-W7745/7.5
PRINTED 1948