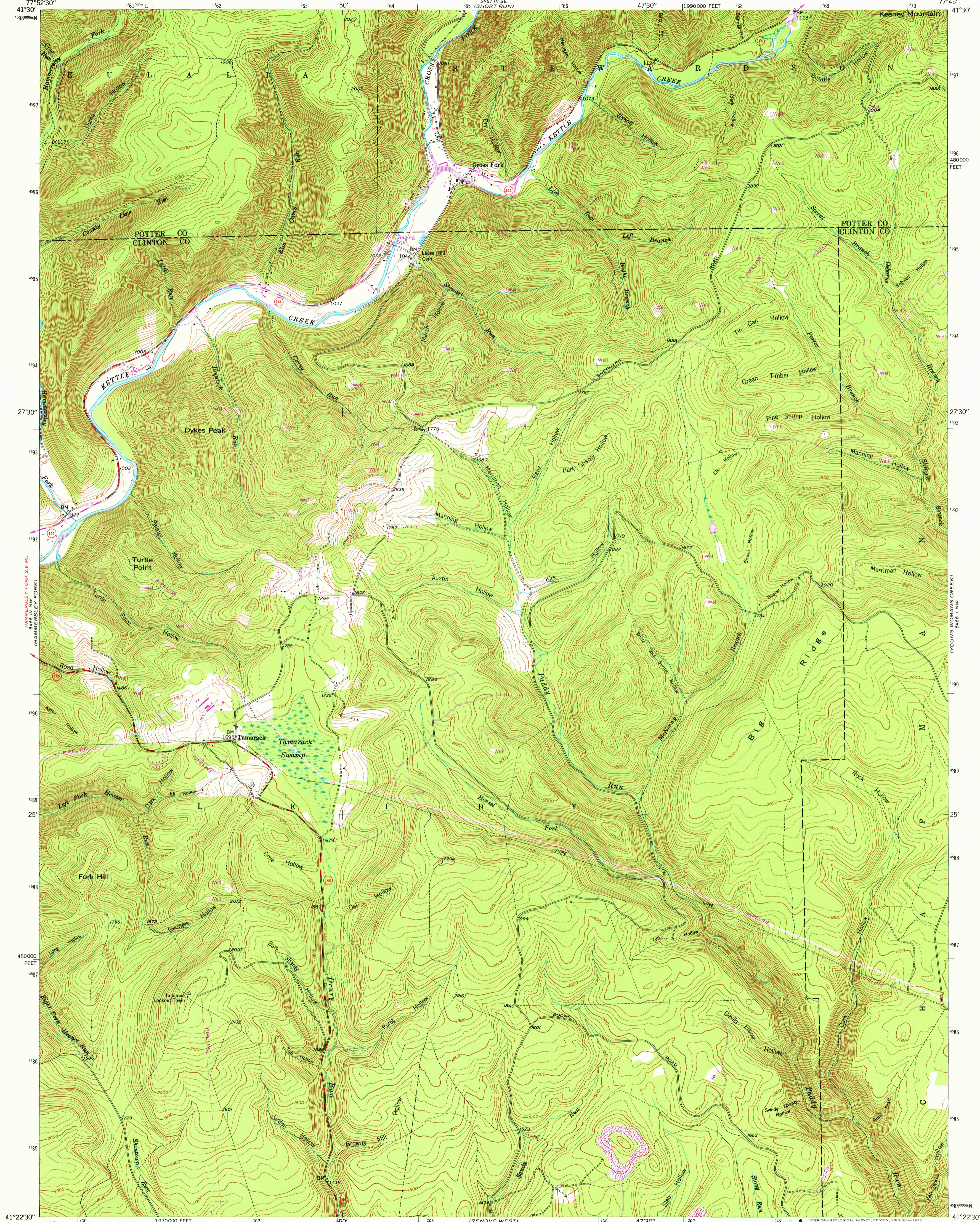
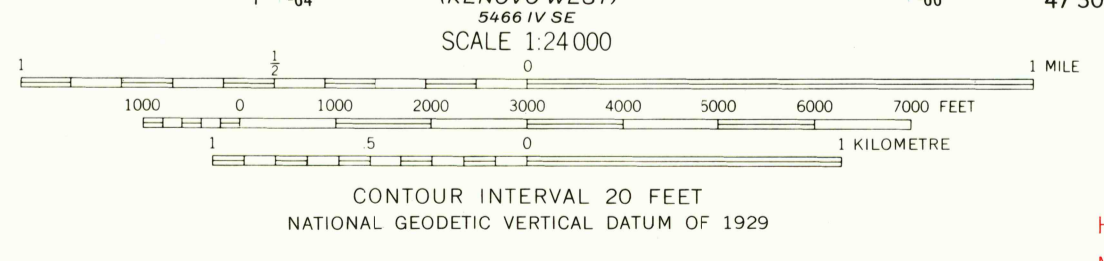
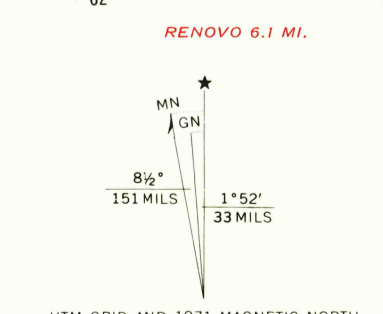


41°30' N  
77°52'30" W

41°30' N  
77°45' W

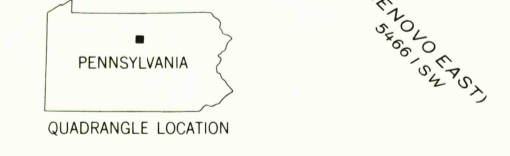


Mapped, edited, and published by the Geological Survey  
Control by USGS and USC&GS  
Topography from aerial photographs by multiplex methods  
Aerial photographs taken 1944 Field check, 1946  
Polyconic projection. 1927 North American datum  
10 000-foot grid based on Pennsylvania coordinate system,  
north zone  
1000-metre Universal Transverse Mercator grid ticks,  
zone 18, shown in blue  
Revisions shown in purple compiled in cooperation with State of  
Pennsylvania agencies from aerial photographs taken 1971. This  
information not field checked



ROAD CLASSIFICATION

Heavy-duty	4 LANE 16 LANE	Light-duty
Medium-duty	4 LANE 16 LANE	Unimproved dirt
U.S. Route		State Route



TAMARACK, PA.  
NE/4 RENOV WEST 15' QUADRANGLE  
N4122.5-W7745/7.5  
1946  
PHOTOREVISED 1971  
AMS 5466 IV NE-SERIES V831

THIS MAP COMPLIES WITH NATIONAL MAP ACCURACY STANDARDS  
FOR SALE BY U.S. GEOLOGICAL SURVEY, RESTON, VIRGINIA 22092  
A FOLDER DESCRIBING TOPOGRAPHIC MAPS AND SYMBOLS IS AVAILABLE ON REQUEST

USGS  
Historical File  
Topographic Division