

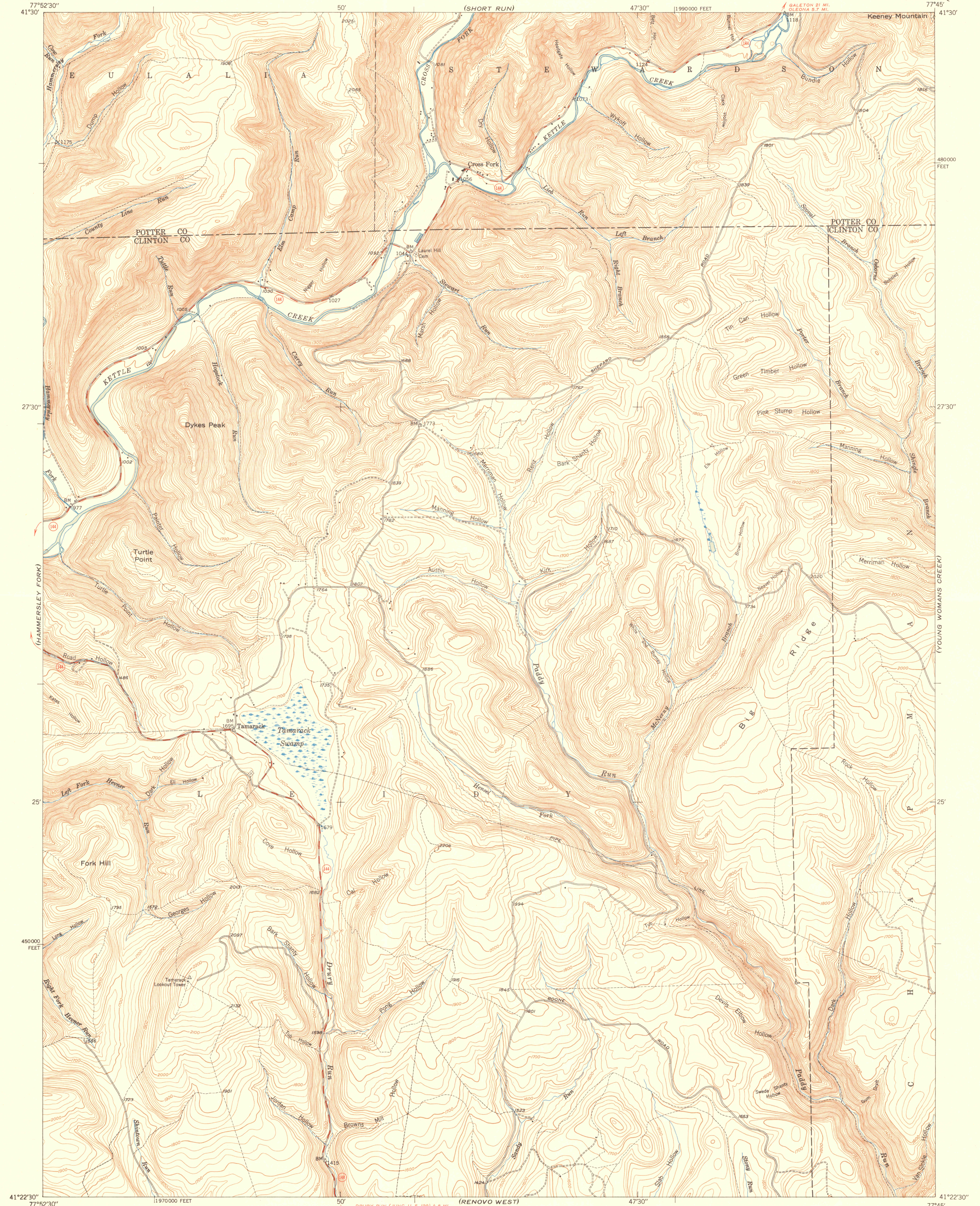
(CONRAD)

UNITED STATES
DEPARTMENT OF THE INTERIOR
GEOLOGICAL SURVEY

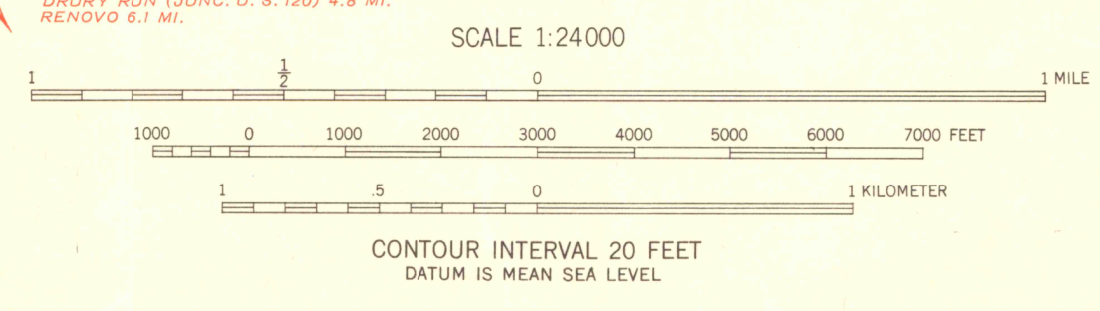
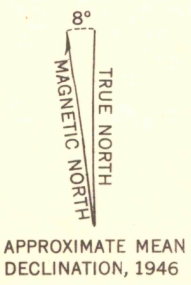
STATE OF PENNSYLVANIA
DEPARTMENT OF INTERNAL AFFAIRS
WILLIAM S. LIVENGOD, JR., SECRETARY
TOPOGRAPHIC AND GEOLOGIC SURVEY
STANLEY HOLMAN CATHCART, STATE GEOLOGIST

TAMARACK QUADRANGLE
PENNSYLVANIA
7.5 MINUTE SERIES (TOPOGRAPHIC)

(OLEONA)



Mapped, edited, and published by the Geological Survey
Control by USGS and USC&GS
Topography from aerial photographs by multiplex methods
Aerial photographs taken 1944 Field check, 1946
Polyconic projection. 1927 North American datum
10 000-foot grid based on Pennsylvania coordinate system,
north zone

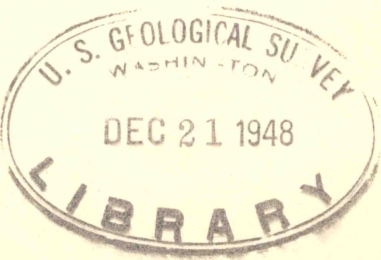


THIS MAP COMPLIES WITH NATIONAL MAP ACCURACY STANDARDS

ROAD CLASSIFICATION	
HARD-SURFACE ALL WEATHER ROADS	DRY WEATHER ROADS
Heavy-duty ——— 4 LANE LANE	Improved dirt ———
Medium-duty ——— 4 LANE LANE	Unimproved dirt ———
Loose-surface, graded, or narrow hard-surface ———	
U. S. Route	State Route



TAMARACK, PA.
N4122.5—W7745/7.5
PRINTED 1948



FOR SALE BY U. S. GEOLOGICAL SURVEY, WASHINGTON 25, D. C.