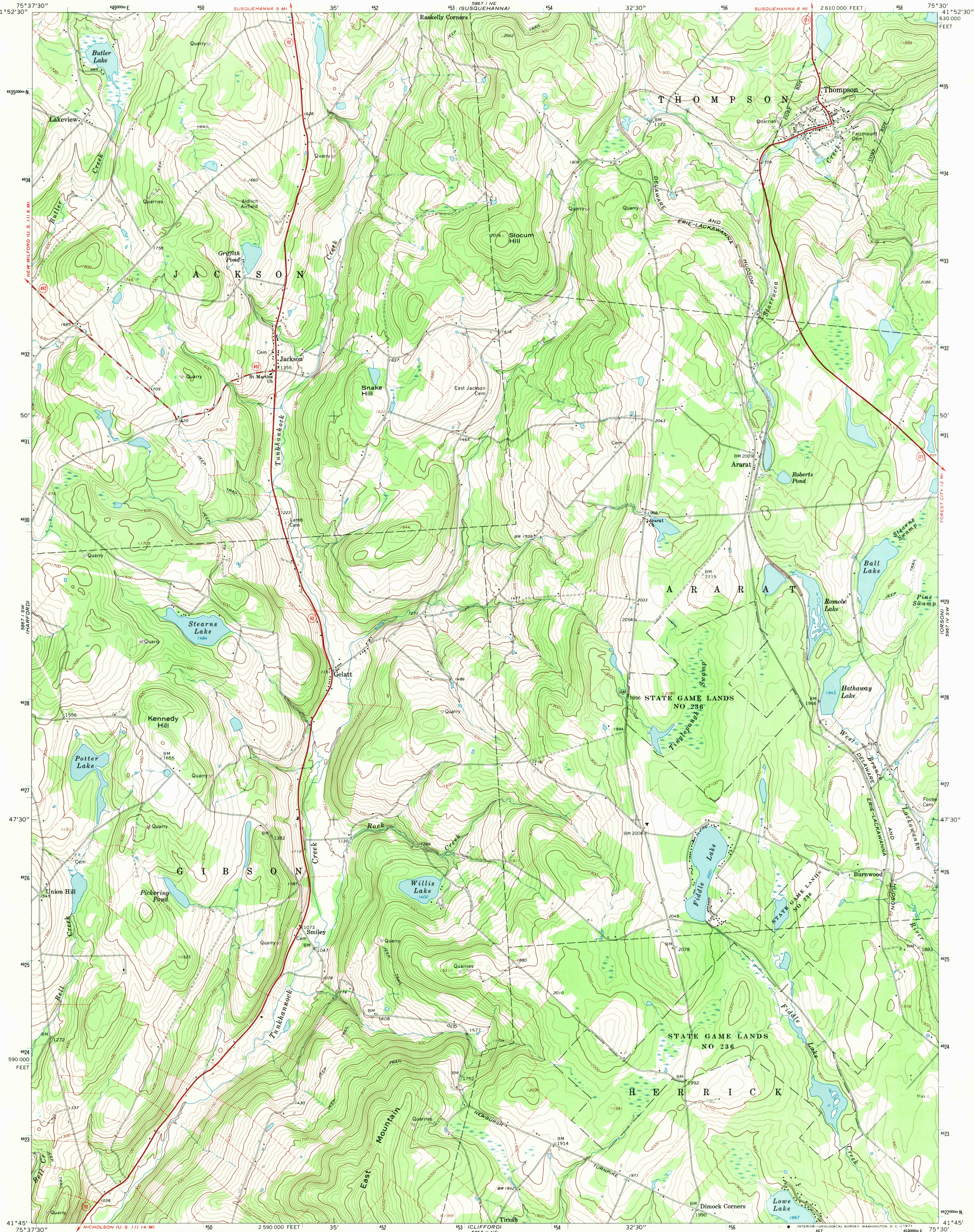


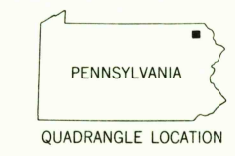
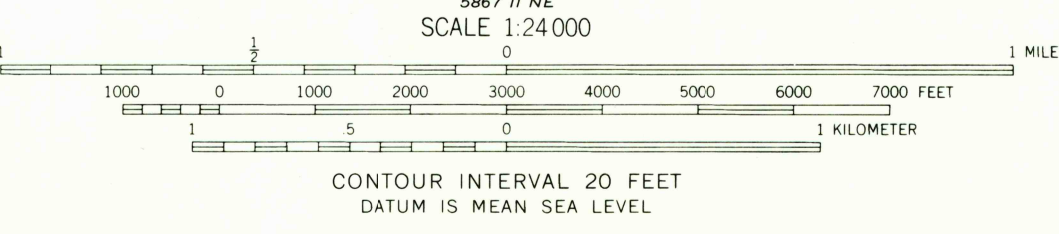
UNITED STATES
DEPARTMENT OF THE INTERIOR
GEOLOGICAL SURVEY

THOMPSON QUADRANGLE
PENNSYLVANIA—SUSQUEHANNA CO.
7.5 MINUTE SERIES (TOPOGRAPHIC)
SE/4 SUSQUEHANNA 15' QUADRANGLE



Maped, edited, and published by the Geological Survey
Control by USGS and USC&GS
Topography by photogrammetric methods from aerial photographs
taken 1966. Field checked 1968
Polyconic projection, 1927 North American datum
10,000-foot grid based on Pennsylvania coordinate system, north zone
1000-meter Universal Transverse Mercator grid ticks,
zone 18, shown in blue
Fine red dashed lines indicate selected fence and field lines where
generally visible on aerial photographs. This information is unchecked

UTM GRID AND 1968 MAGNETIC NORTH
DECLINATION AT CENTER OF SHEET



ROAD CLASSIFICATION
Primary highway, all weather, hard surface
Secondary highway, all weather, hard surface
Light-duty road, all weather, improved surface
Unimproved road, fair or dry weather
State Route
USGS HISTORICAL FILE TOPOGRAPHIC DIVISION
THOMPSON, PA.
SE/4 SUSQUEHANNA 15' QUADRANGLE
N4145—W7530/7.5
1968
AMS 5867 1 SE—SERIES V831

U.S.G.S.
FILE COPY
TOPOGRAPHIC DIVISION
3035
MAR 3 1971

THIS MAP COMPLIES WITH NATIONAL MAP ACCURACY STANDARDS
FOR SALE BY U.S. GEOLOGICAL SURVEY, WASHINGTON, D. C. 20242
A FOLDER DESCRIBING TOPOGRAPHIC MAPS AND SYMBOLS IS AVAILABLE ON REQUEST