

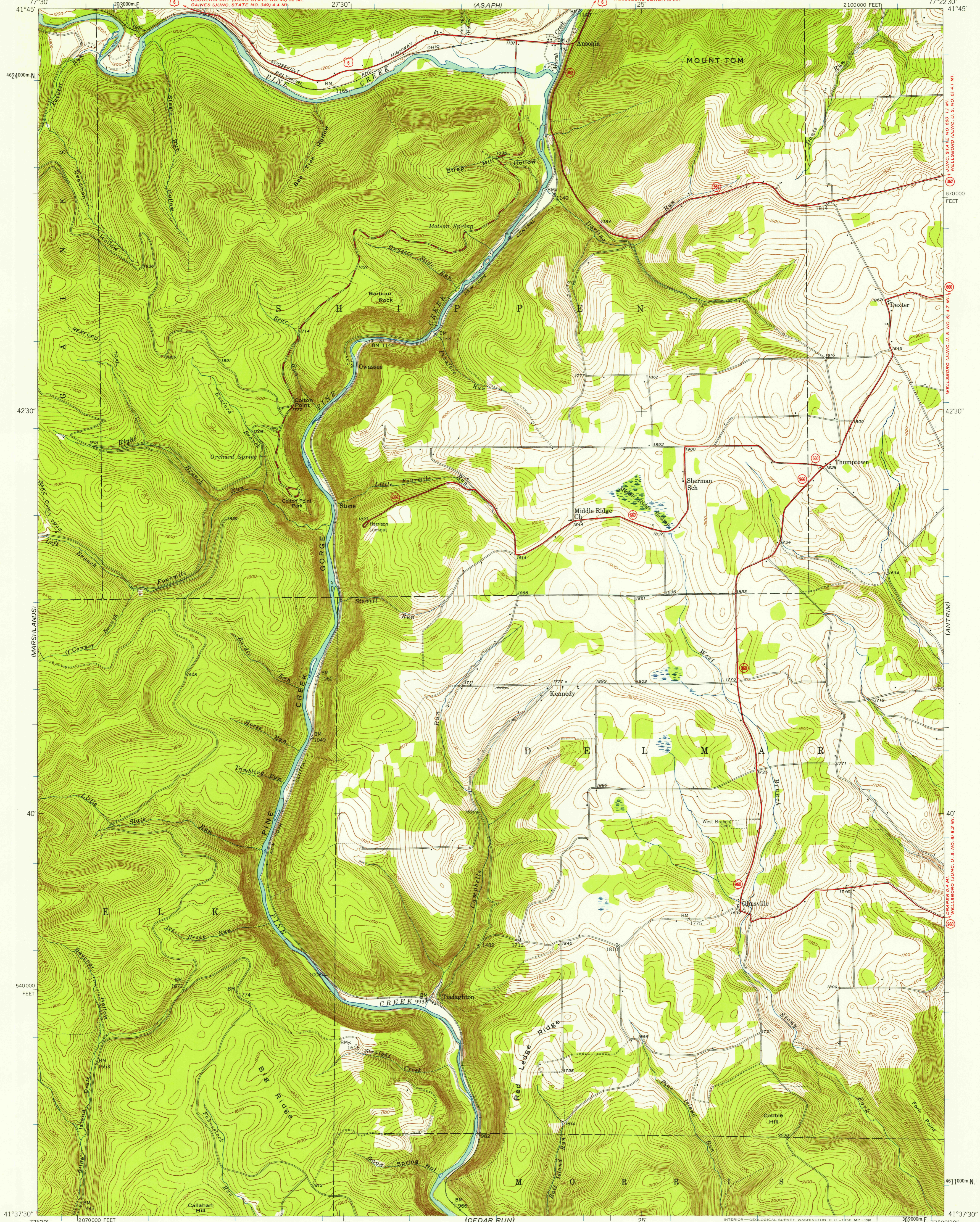
(GAINES)
1:62,500

UNITED STATES
DEPARTMENT OF THE INTERIOR
GEOLOGICAL SURVEY

STATE OF PENNSYLVANIA
DEPARTMENT OF INTERNAL AFFAIRS
TOPOGRAPHIC AND GEOLOGIC SURVEY

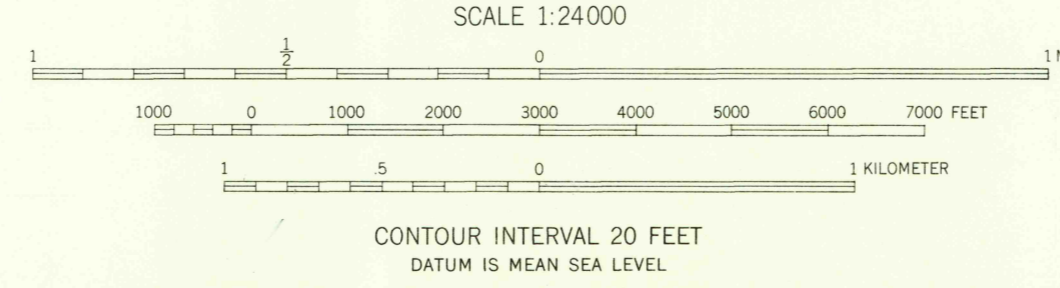
TIADAGHTON QUADRANGLE
PENNSYLVANIA-TIOGA CO.
7.5 MINUTE SERIES (TOPOGRAPHIC)

(KEENEVILLE)



Mapped, edited, and published by the Geological Survey
Control by USGS and USC & GS
Topography from aerial photographs by multiplex methods
Aerial photographs taken 1944. Field check 1946
Polyconic projection, 1927 North American datum
10000 foot grid based on Pennsylvania coordinate system,
North zone
1000-meter Universal Transverse Mercator grid ticks,
zone 18, shown in blue

81°
TRUE NORTH
MAGNETIC NORTH
APPROXIMATE MEAN
DECLINATION, 1946



USGS
HISTORICAL FILE
TOPOGRAPHIC DIVISION

ROAD CLASSIFICATION
HARD-SURFACE ALL WEATHER ROADS
Heavy-duty **CLANE I CLANE** Improved dirt
Medium-duty **CLANE I CLANE** Unimproved dirt
Loose-surface or narrow hard-surface
U. S. Route State Route

TIADAGHTON, PA.
N4137.5-W7722.5/7.5

THIS MAP COMPLIES WITH NATIONAL MAP ACCURACY STANDARDS
FOR SALE BY U. S. GEOLOGICAL SURVEY, WASHINGTON 25, D. C.
A FOLDER DESCRIBING TOPOGRAPHIC MAPS AND SYMBOLS IS AVAILABLE ON REQUEST

1946

U.S.G.S.
FILE COPY
TOPOGRAPHIC DIVISION

JAN 29 1956

3901