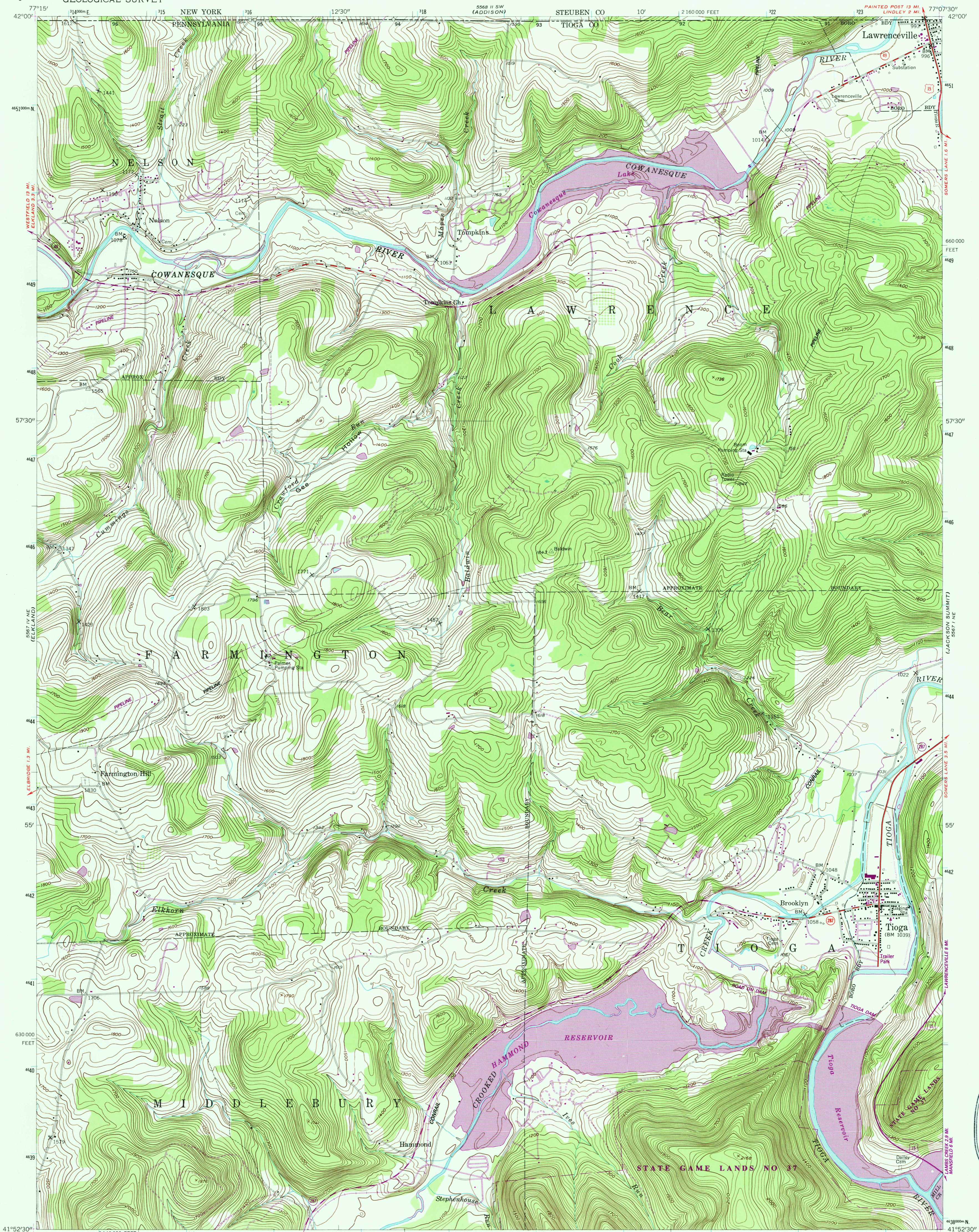
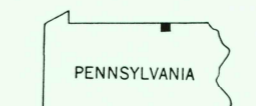
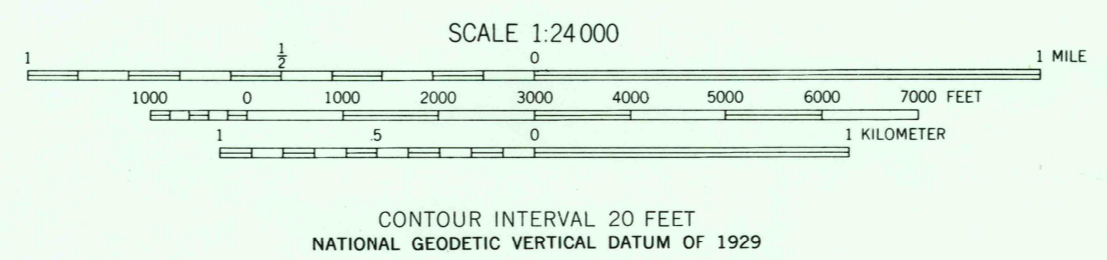
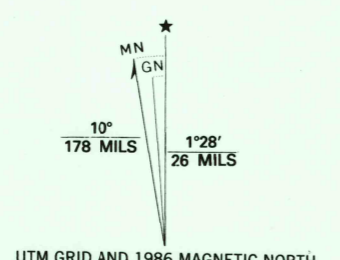




568 11 SE
(CATON)



Mapped, edited, and published by the Geological Survey
Control by USGS and USC&GS
Topography from aerial photographs by stereophotogrammetric methods. Aerial photographs taken 1952. Field check 1954
Polyconic projection. 1927 North American datum
10,000-foot grid based on Pennsylvania coordinate system, north zone
All wells shown are gas storage wells
Unchecked elevations are shown in brown
1000-meter Universal Transverse Mercator grid ticks, zone 18, shown in blue
To place on the predicted North American Datum 1983, move the projection lines 4 meters south and 25 meters west as shown by dashed corner ticks
There may be private inholdings within the boundaries of the National or State reservations shown on this map



ROAD CLASSIFICATION

Heavy-duty	Light-duty
Medium-duty	Unimproved dirt
U.S. Route	State Route

TIOGA, PA.—N. Y.

THIS MAP COMPLIES WITH NATIONAL MAP ACCURACY STANDARDS
FOR SALE BY U.S. GEOLOGICAL SURVEY, RESTON, VIRGINIA 22092
A FOLDER DESCRIBING TOPOGRAPHIC MAPS AND SYMBOLS IS AVAILABLE ON REQUEST

Revisions shown in purple compiled in cooperation with Commonwealth of Pennsylvania agencies from aerial photographs taken 1983 and other sources. This information not field checked. Map edited 1986

41077-H2-TF-024
1954
PHOTOREVISED 1986
DMA 5567 1 NW-SERIES V831

USGS MIND HISTORICAL MAP
SEP 23 1986
REC'D FILE COPY