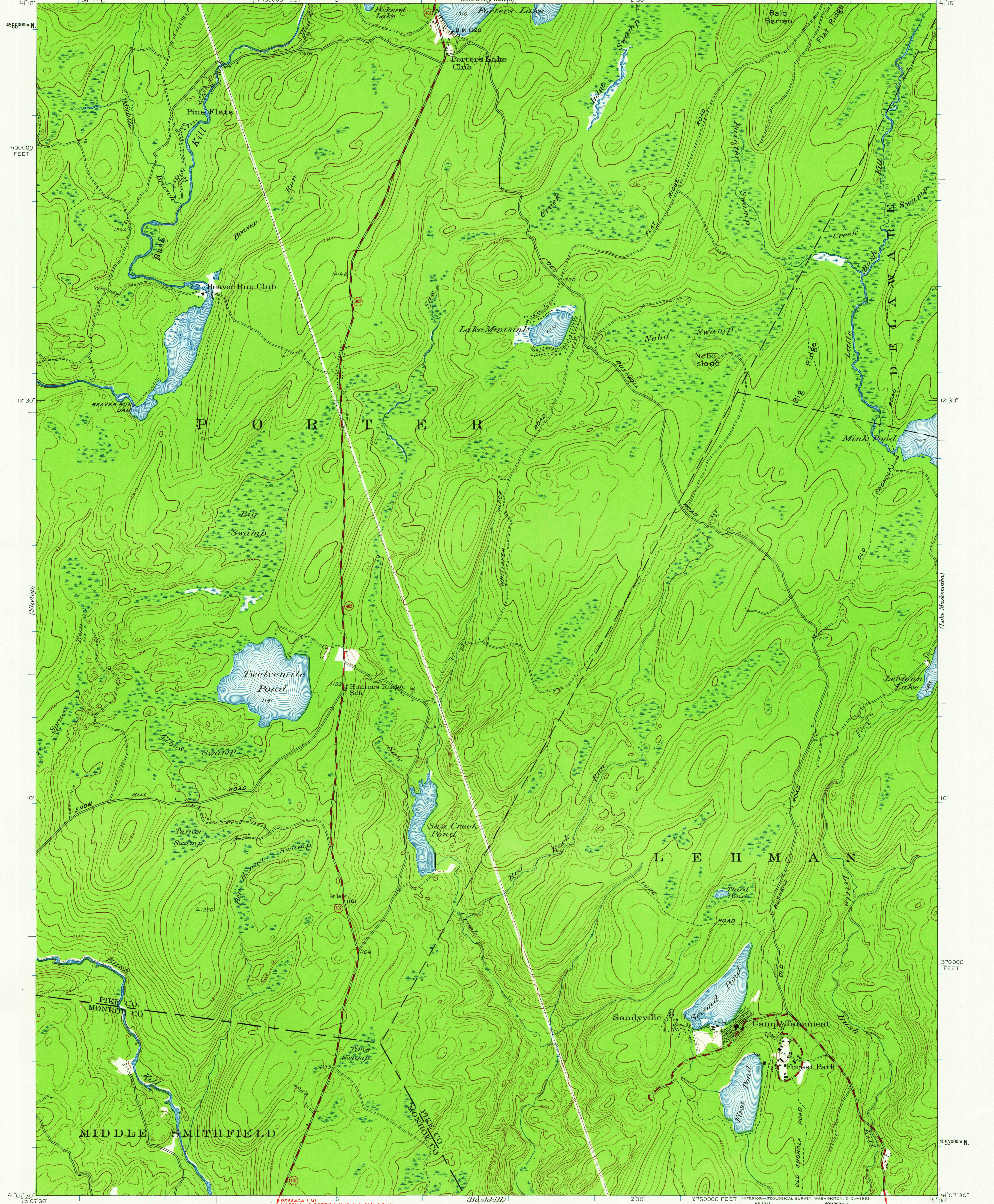


(Hawley)  
62540

(Mifflin)  
62500



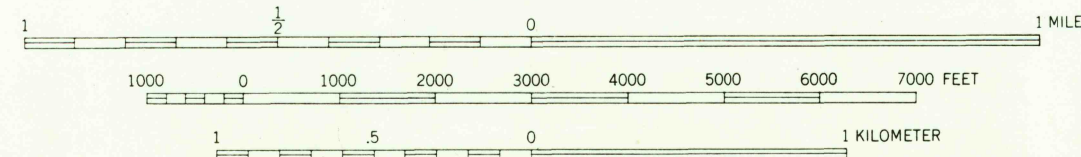
Mapped by the Geological Survey  
1943

SCALE 1:24000

Interior-Geological Survey, Washington, D.C.—1942  
MR 2312

**ROAD CLASSIFICATION**  
Medium-duty ———  
Light-duty ———  
Unimproved dirt - - - - -  
State Route ○

APPROXIMATE MEAN  
DECLINATION, 1943



Contour interval 20 feet  
Datum is mean sea level

USGS  
HISTORICAL FILE  
TOPOGRAPHIC DIVISION

Polyconic projection. 1927 North American datum  
10 000 foot grid based on Pennsylvania (North)  
rectangular coordinate system  
1000 meter Universal Transverse Mercator grid ticks,  
zone 18, shown in blue BUSHY HILL GAINC. U.S. 209 2.4 MI.  
EAST STROUDSBURG 15 MI.

**TWELVEMILE POND, PA.**  
N4107.5—W7500.7.5  
1943

FOR SALE BY U.S. GEOLOGICAL SURVEY, WASHINGTON 25, D. C.  
A FOLDER DESCRIBING TOPOGRAPHIC MAPS AND SYMBOLS IS AVAILABLE ON REQUEST