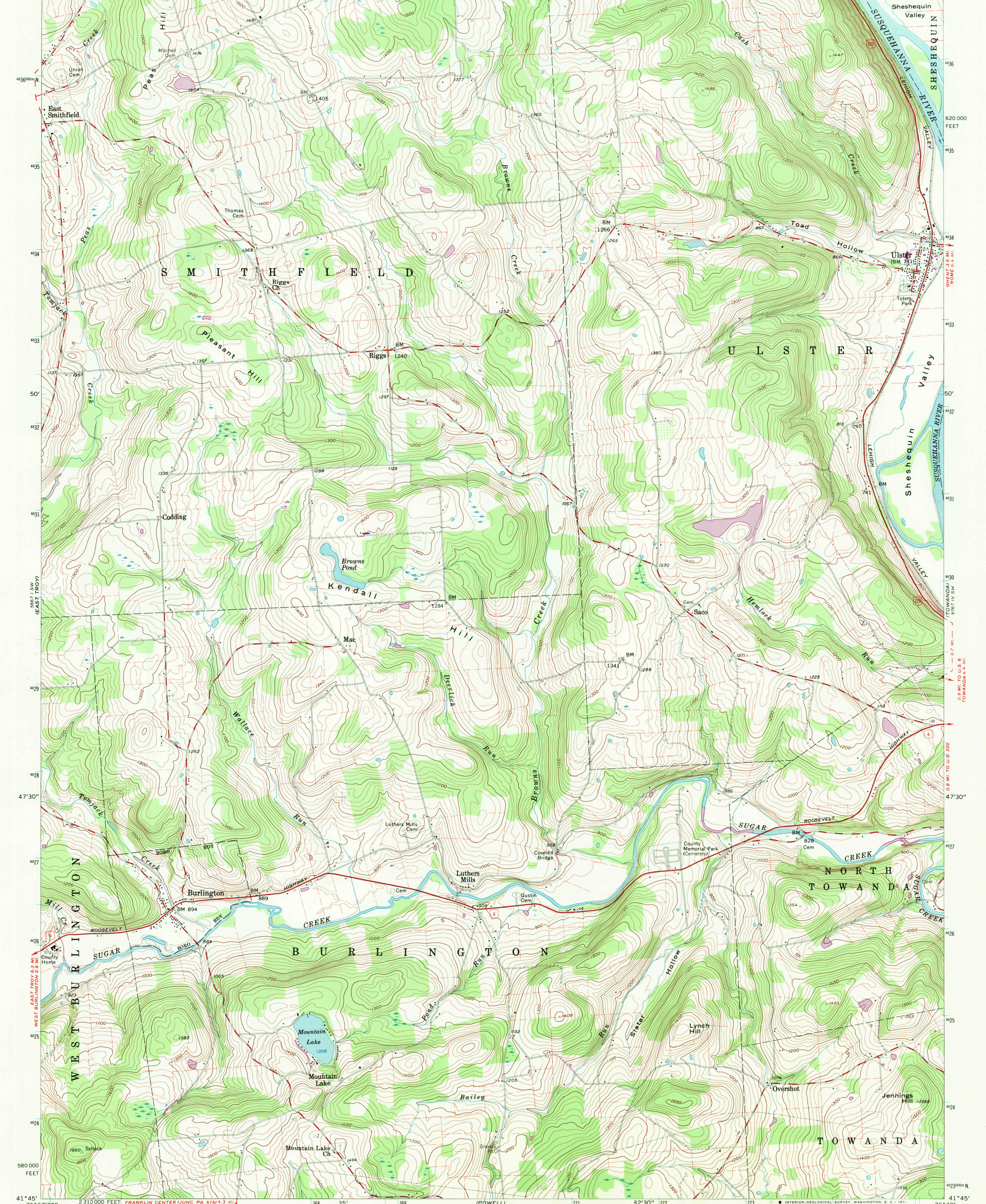
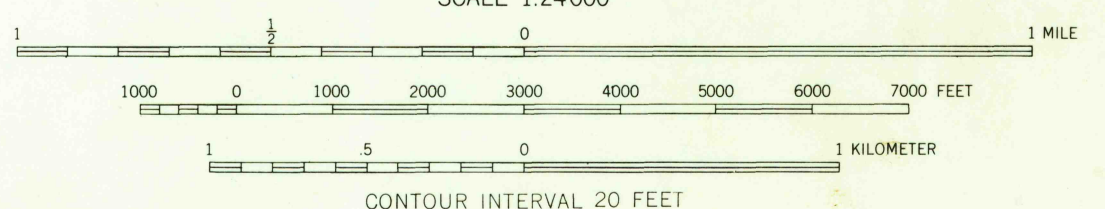
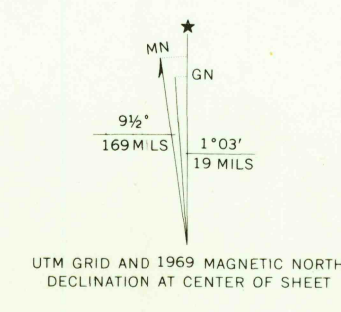


76° 37' 30" 167 35' 168 36' 169 37' 170 38' 171 39' 32' 30" 2 330 000 FEET 373 76° 30' 41° 52' 30"



Mapped, edited, and published by the Geological Survey  
Control by USGS and USC&GS  
Topography from aerial photographs by Kelsh plotter  
Aerial photographs taken 1952. Field check 1957  
Polyconic projection. 1927 North American datum  
10,000-foot grid based on Pennsylvania coordinate system,  
north zone  
1000-meter Universal Transverse Mercator grid ticks,  
zone 18, shown in blue  
Fine red dashed lines indicate selected fence and field lines  
visible on aerial photographs. This information is unchecked  
Revisions shown in purple compiled in cooperation with  
State of Pennsylvania agencies from aerial photographs  
taken 1969. This information not field checked



USGS  
HISTORICAL FILE  
TOPOGRAPHIC DIVISION

ROAD CLASSIFICATION

|             |                 |
|-------------|-----------------|
| Heavy-duty  | Light-duty      |
| Medium-duty | Unimproved dirt |
| U.S. Route  |                 |



U.S.G.S.  
FILE COPY  
TOPOGRAPHIC DIVISION

ULSTER, PA.  
SE/4 SAYRE 15' QUADRANGLE  
N4145—W7630/7.5  
1957  
PHOTOREVISED 1969  
AMS 5667 1 SE—SERIES V831

JUL 27 1971