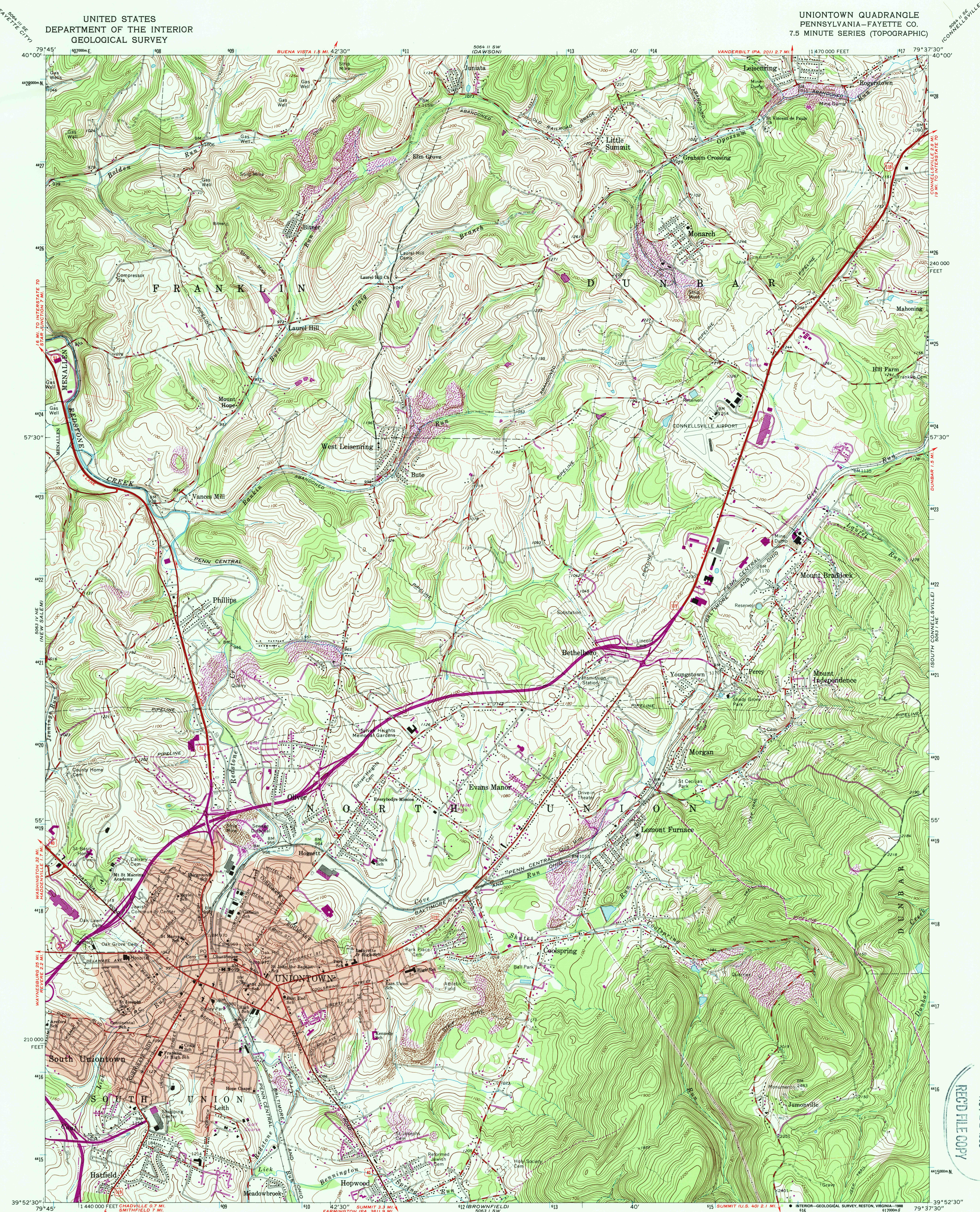


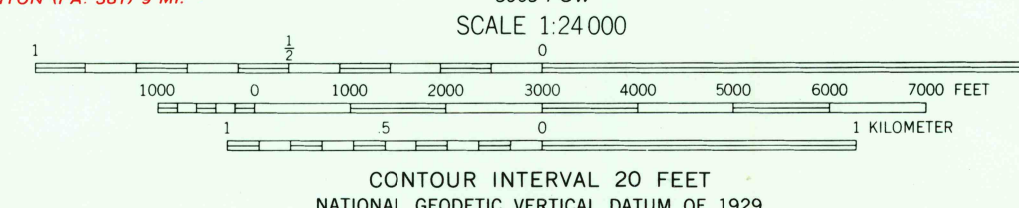
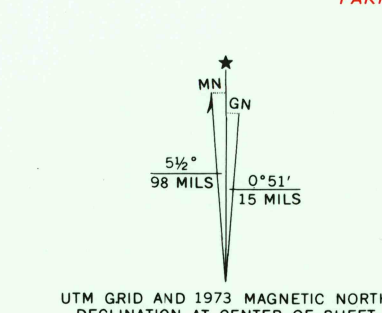
UNITED STATES
DEPARTMENT OF THE INTERIOR
GEOLOGICAL SURVEY

UNIONTOWN QUADRANGLE
PENNSYLVANIA—FAYETTE CO.
7.5 MINUTE SERIES (TOPOGRAPHIC)

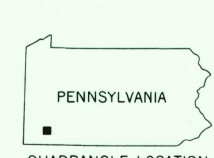


USGS NATIONAL MAP
NOV 22 1988
REC'D FILE COPY

Mapped, edited, and published by the Geological Survey
Control by USGS, USC&GS, and USCE
Topography by photogrammetric methods from aerial photographs
taken 1962 and 1963. Field checked 1963
Polyconic projection. 1927 North American datum
10,000-foot grid based on Pennsylvania coordinate system, south zone
1000-meter Universal Transverse Mercator grid ticks,
zone 17, shown in blue
Fine red dashed lines indicate selected fence and field lines where
generally visible on aerial photographs. This information is unchecked
Red tint indicates area in which only landmark buildings are shown
To place on the predicted North American Datum 1983,
move the projection lines 5 meters south and
19 meters west as shown by dashed corner ticks



| ROAD CLASSIFICATION | | | |
|---------------------|-----------------|-----------------|--|
| Heavy-duty | Light-duty | Unimproved dirt | |
| Medium-duty | Unimproved dirt | | |
| U. S. Route | State Route | | |



THIS MAP COMPLIES WITH NATIONAL MAP ACCURACY STANDARDS
FOR SALE BY U. S. GEOLOGICAL SURVEY
DENVER, COLORADO 80225, OR RESTON, VIRGINIA 22092
A FOLDER DESCRIBING TOPOGRAPHIC MAPS AND SYMBOLS IS AVAILABLE ON REQUEST

Revisions shown in purple compiled in cooperation with
State of Pennsylvania agencies from aerial photographs
taken 1973. This information not field checked

UNIONTOWN, PA
39079-H6-TF-024
PHOTOINSPECTED 1977
1963
PHOTOREVISED 1973
DMA 5063 1 NW—SERIES V851