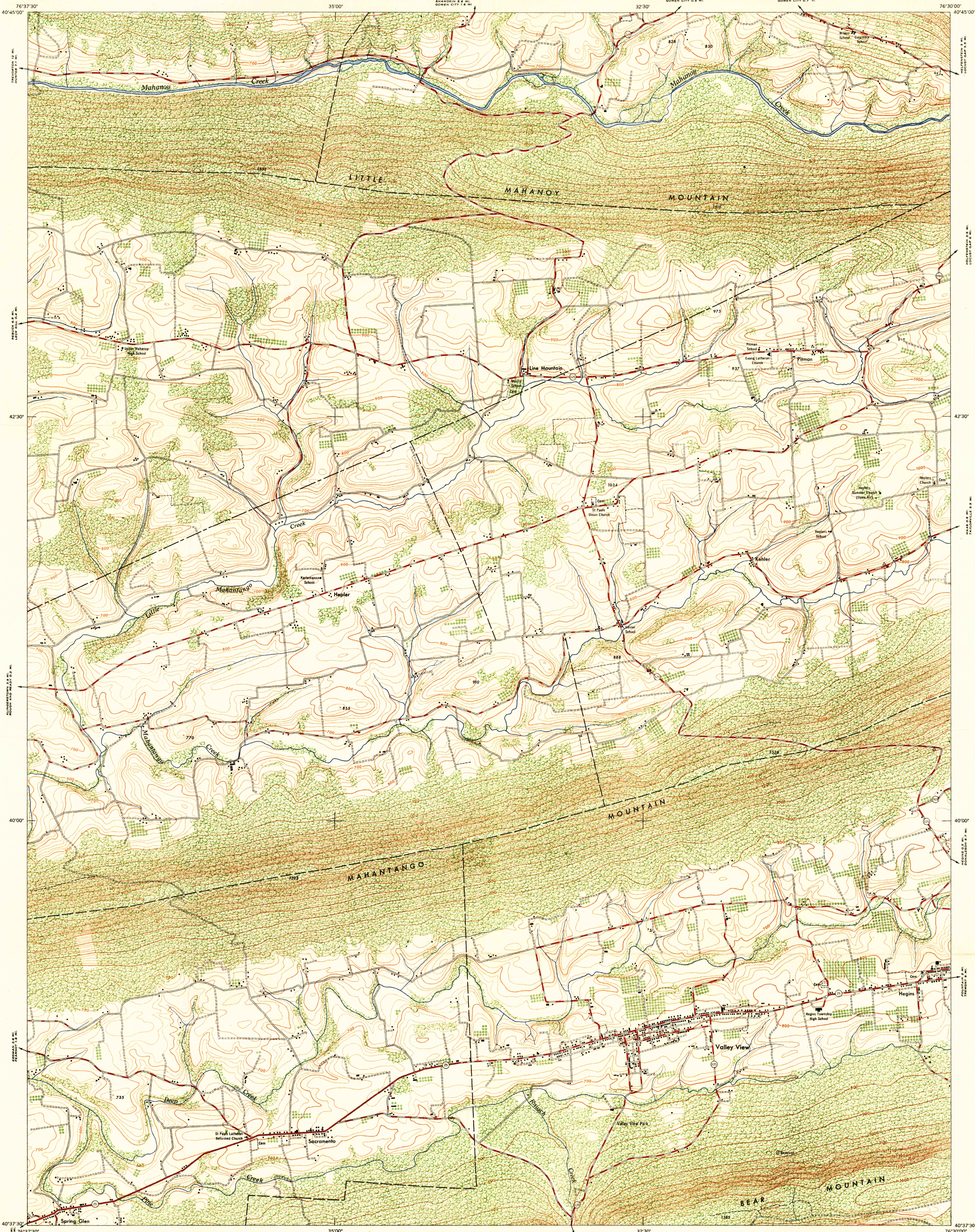


U.S.G.S.
FILE COPY
Inspection and Editing

U.S.G.S.
FILE COPY
Inspection and Editing



A.M.S. V831
Type F (AMS 1), 1947.

Prepared under the direction of the Chief of Engineers by the Army Map Service (AM), War Department, Washington, D.C. Redrawn in 1947 from Pennsylvania, 1:62,500, C.E. Lyons, 1945. Planimetric detail revised from aerial photography by photo-planimetric methods. Aerial photography by Army Map Service, 1946. Roads classified by field inspection. Horizontal and vertical control by USGS and USC&GS.

LEGEND
ROAD DATA 1947

Hard surface, heavy duty road, more than two lanes wide	Loose surface, graded and drained, or narrow hard surface road
Hard surface, heavy duty road, two lanes wide	Improved dirt road
Hard surface, medium duty road, more than two lanes wide	Unimproved dirt road
Hard surface, medium duty road, two lanes wide	Trail
State route marker	

RAILROADS

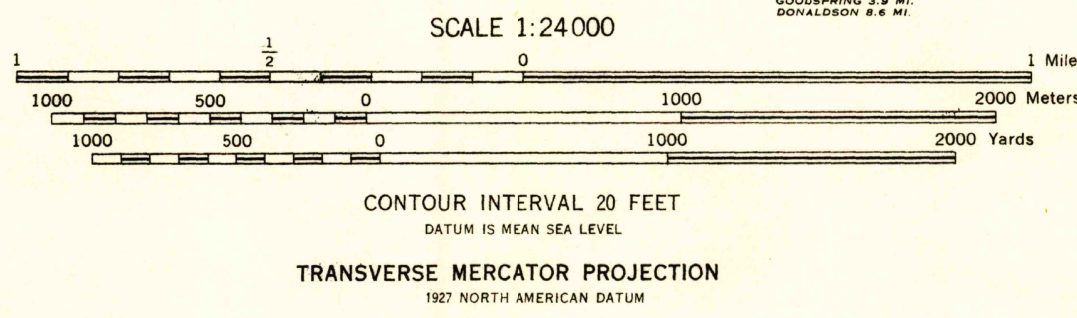
Single track	Double track
Standard gauge	
Narrow gauge	
Railroad in street	
Carline	

BOUNDARIES

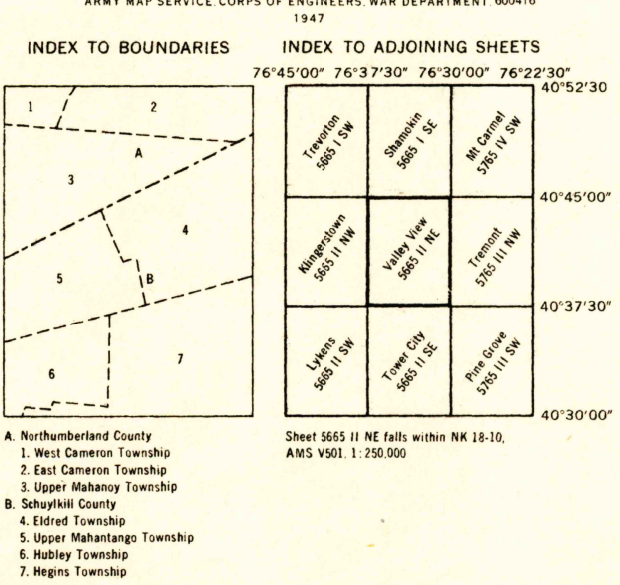
National	
State (with monument)	
County	
Township	
Corporate limits	
Reservation	
Military reservation	

Other Features

Horizontal control point	
Bench mark, monument	
Bench mark, non-monument	
Spot elevation in feet	
Cemetery	
Woods or brushwood	
Orchard	
Vineyard	
Intermittent lake	
Swamp, marsh	
Rapids, falls	
Large rapids and falls	



USGS
HISTORICAL FILE
TOPOGRAPHIC DIVISION



U.S.G.S.
FILE COPY
Inspection and Editing

AUG 20 1948

2145