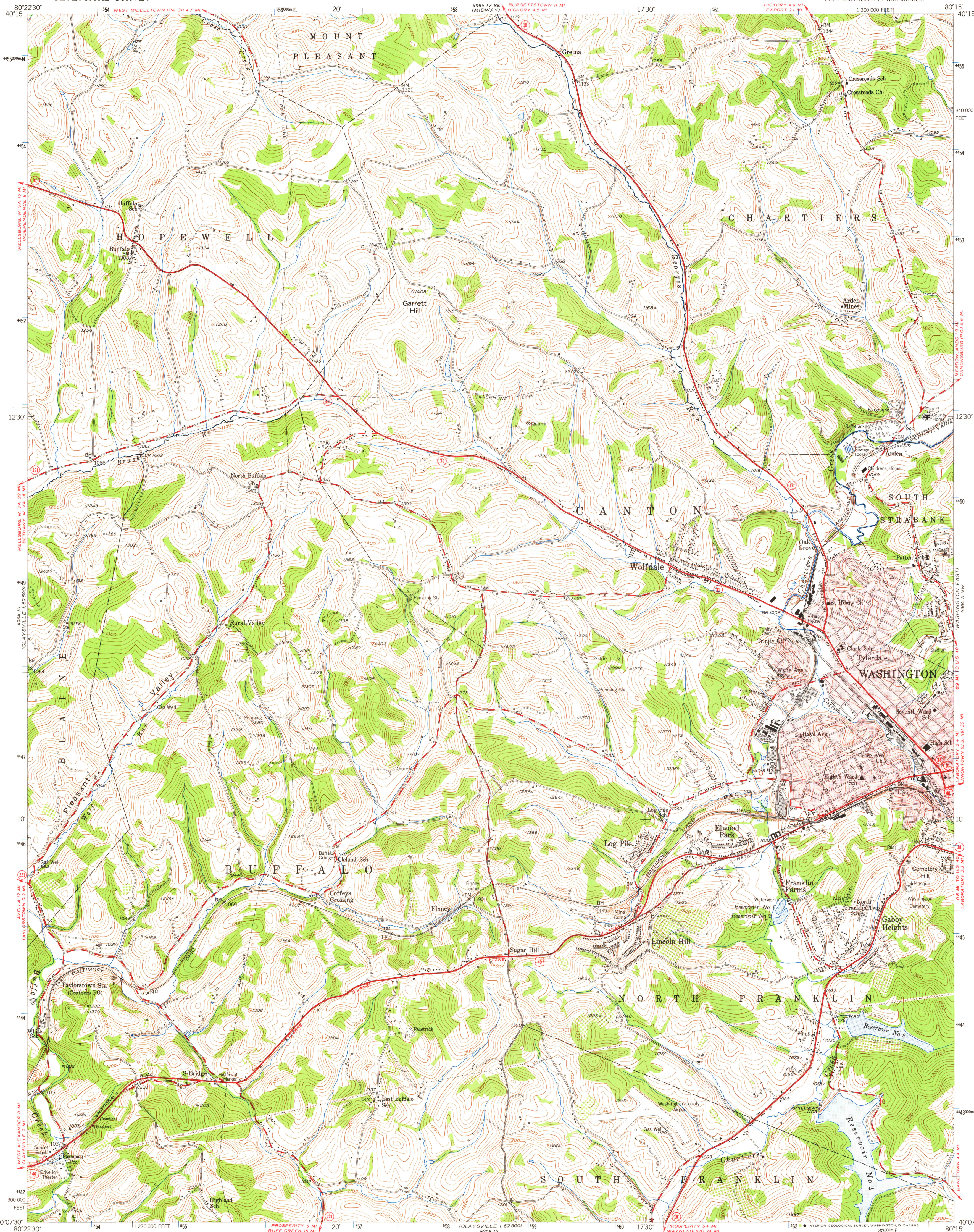


UNITED STATES  
DEPARTMENT OF THE INTERIOR  
GEOLOGICAL SURVEY

WASHINGTON WEST QUADRANGLE  
PENNSYLVANIA-WASHINGTON CO.  
7.5 MINUTE SERIES (TOPOGRAPHIC)  
NE/4 CLAYSVILLE 15 QUADRANGLE



Mapped, edited, and published by the Geological Survey  
Control by USGS and USC&GS

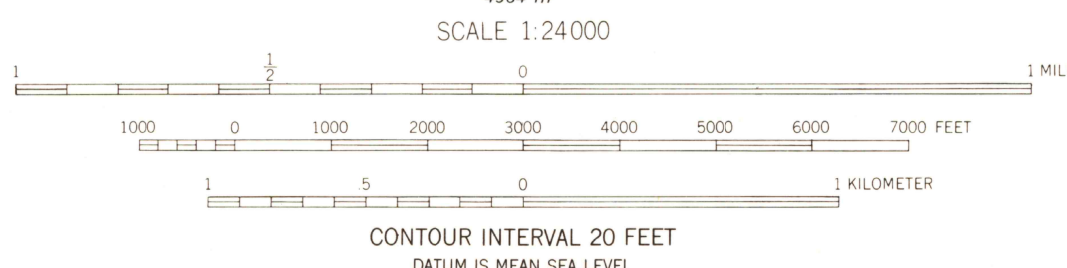
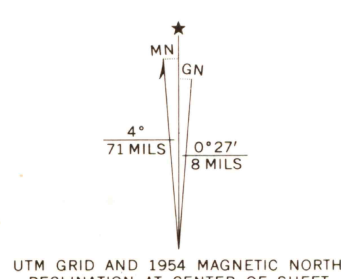
Topography from aerial photographs by multiplex methods  
Aerial photographs taken 1952. Field check 1954

Polyconic projection. 1927 North American datum  
10,000-foot grid based on Pennsylvania coordinate system,  
south zone

Red tint indicates areas in which only  
landmark buildings are shown

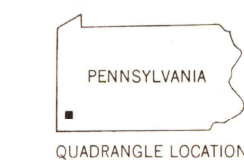
All wells are active oil wells unless otherwise indicated

1000-meter Universal Transverse Mercator grid ticks,  
zone 17, shown in blue



THIS MAP COMPLIES WITH NATIONAL MAP ACCURACY STANDARDS.  
FOR SALE BY U.S. GEOLOGICAL SURVEY, WASHINGTON, D. C. 20242  
A FOLDER DESCRIBING TOPOGRAPHIC MAPS AND SYMBOLS IS AVAILABLE ON REQUEST

USGS  
HISTORICAL FILE  
TOPOGRAPHIC DIVISION



ROAD CLASSIFICATION  
Heavy-duty ——— Light-duty ———  
Medium-duty ——— Unimproved dirt ———  
U.S. Route ——— State Route ———

WASHINGTON WEST, PA.  
NE/4 CLAYSVILLE 15 QUADRANGLE  
N4007.5-W8015.7.5

1954

AMS 4964 III NE-SERIES V831

U.S.G.S.  
FILE 20007  
TOPOGRAPHIC DIVISION

USGS Library  
Reston, VA.  
Tom Armitage

3080  
JAN 1 1966