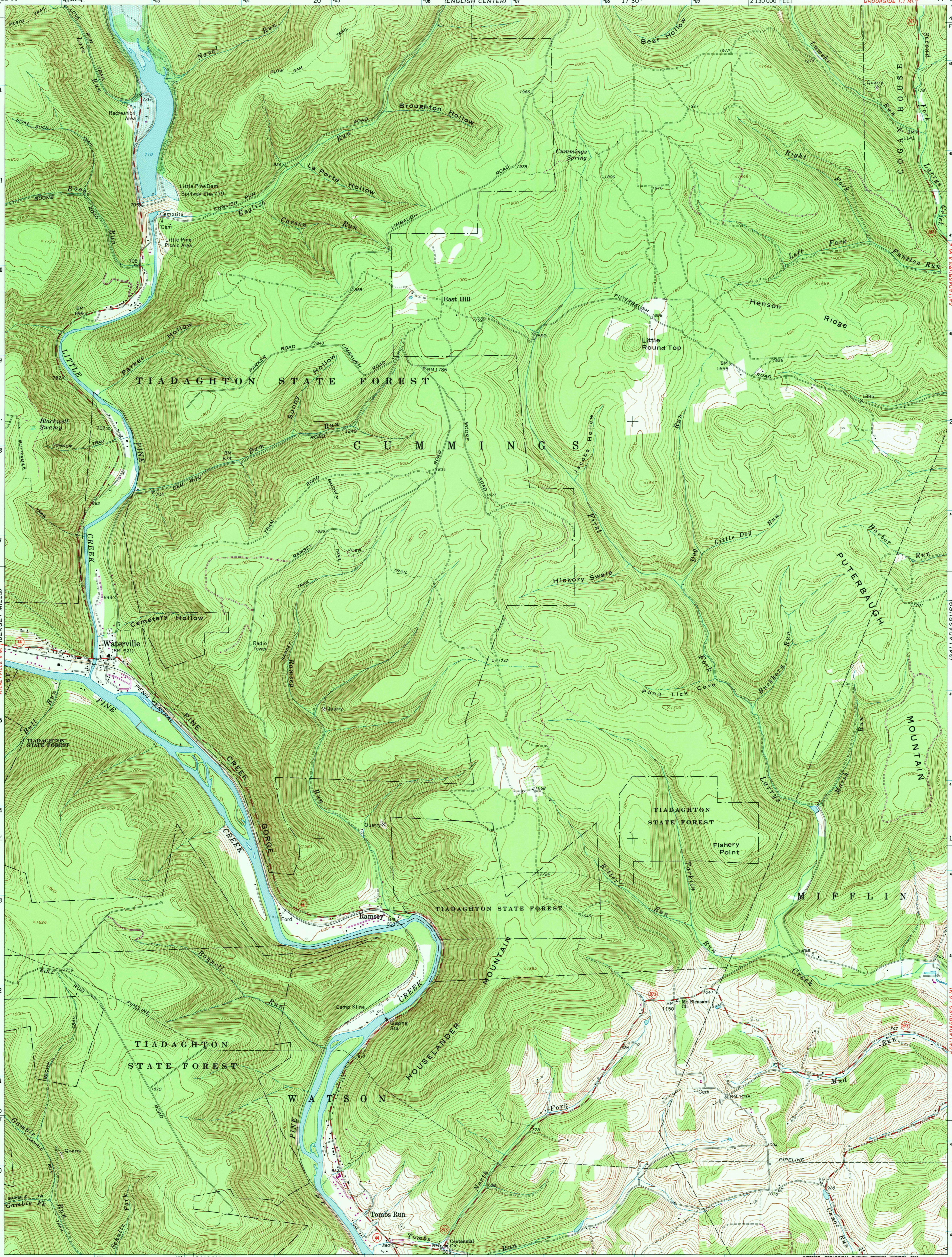


77°22'30" 41°22'30" 482000 N
17°30" 491 490 497 495 494 493 492 491 490 489 488 487 486 485 484 483 482 481 480 479 478 477 476 475 474 473 472 471 470 469 468 467 466 465 464 463 462 461 460 459 458 457 456 455 454 453 452 451 450 449 448 447 446 445 444 443 442 441 440 439 438 437 436 435 434 433 432 431 430 429 428 427 426 425 424 423 422 421 420 419 418 417 416 415
211000 FEET 20' 303 304 305 306 (ENGLISH CENTER) 307 308 17'30" 309 213000 FEET 77°15' 41°22'30" 440000 FEET
ENGLISH CENTER 5 MI. BROOKSIDE 1.1 MI.
SALLADSBURG 5 MI. (SALLADSBURG) 5.0 MI. (SALLADSBURG)
HANEVILLE 6 MI. (JERSEY MILLS) 6.0 MI. (JERSEY MILLS)
JERSEY SHORE 6 MI. (JERSEY SHORE) 6.0 MI. (JERSEY SHORE)
SLUDEN 5 MI. (WHITE PINE) 5.0 MI. (WHITE PINE)



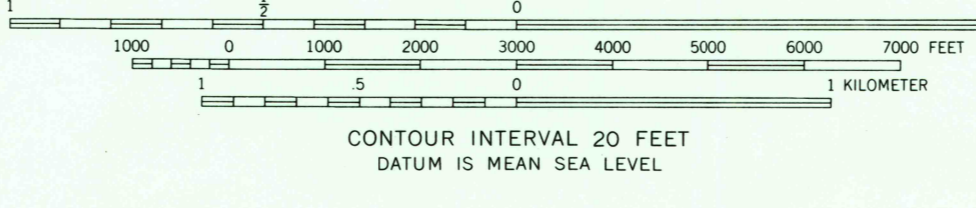
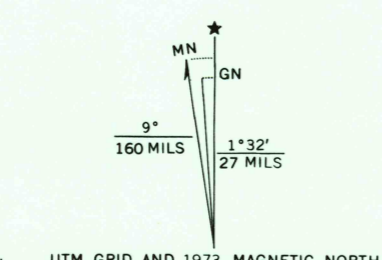
Mapped, edited, and published by the Geological Survey
Control by USGS and USC&GS

Topography by photogrammetric methods from aerial
photographs taken 1963. Field checked 1965

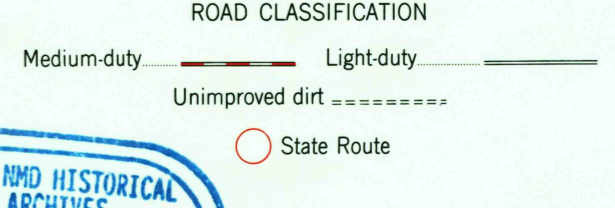
Polyconic projection. 1927 North American datum
10,000-foot grid based on Pennsylvania coordinate system, north zone
1000-meter Universal Transverse Mercator grid ticks,
zone 18, shown in blue

Fine red dashed lines indicate selected fence and field lines where
generally visible on aerial photographs. This information is unchecked

Area covered by dashed light-blue pattern
is subject to controlled inundation
Revisions shown in purple compiled in cooperation with
State of Pennsylvania agencies from aerial photographs
taken 1973. This information not field checked



THIS MAP COMPLIES WITH NATIONAL MAP ACCURACY STANDARDS
FOR SALE BY U.S. GEOLOGICAL SURVEY
DENVER, COLORADO 80225, OR RESTON, VIRGINIA 22092
A FOLDER DESCRIBING TOPOGRAPHIC MAPS AND SYMBOLS IS AVAILABLE ON REQUEST



USGS HISTORICAL
MAP ARCHIVES
AUG 23 1991
REC'D FILE COPY

WATERVILLE, PA.
N4115-W7715/7.5
PHOTOINSPECTED 1983
1965
PHOTOREVISED 1973
AMS 5566 IV SE-SERIES V831

5566 IV NE (CANAL)

5566 IV SE (WHITE PINE)