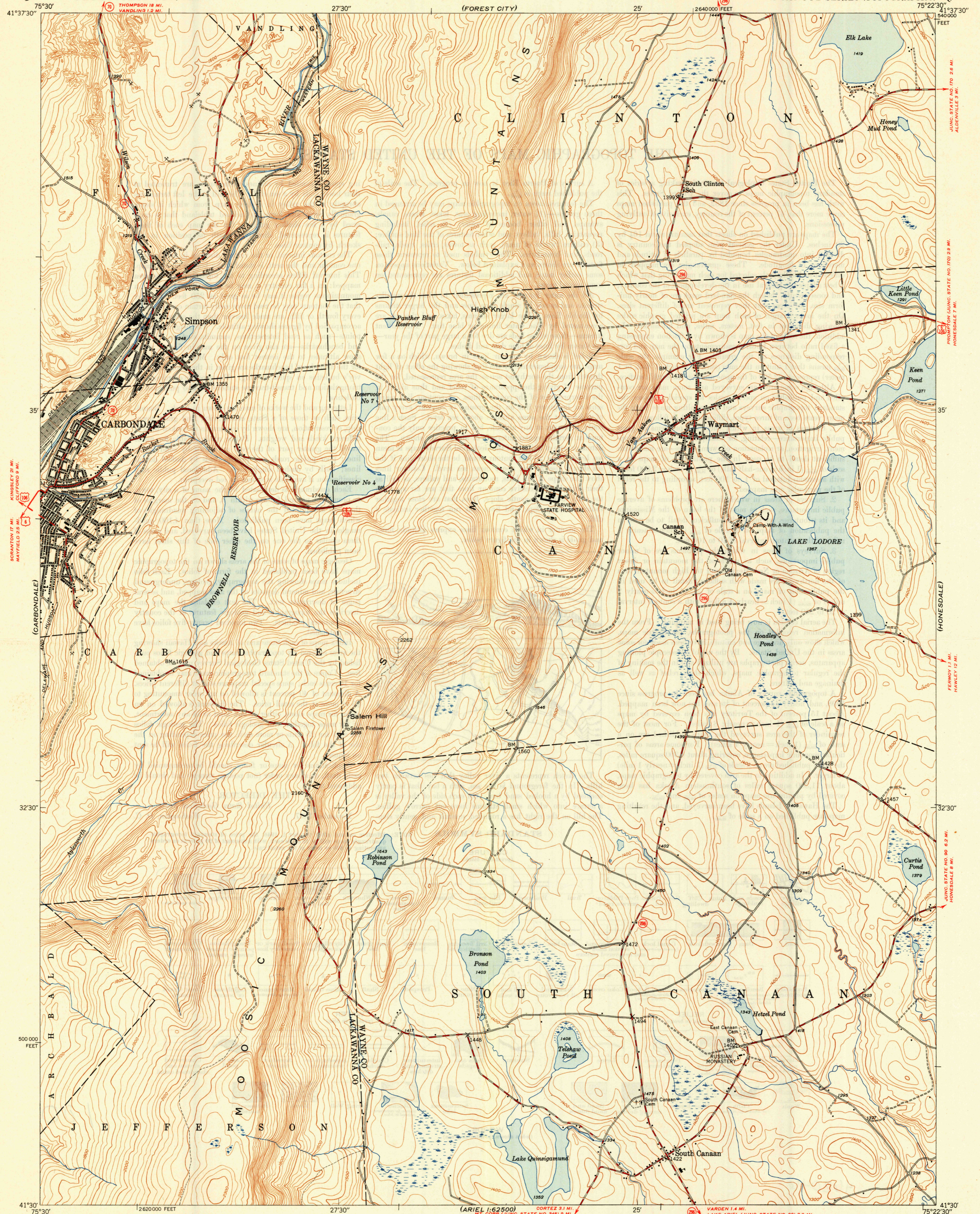


(CLIFFORD)

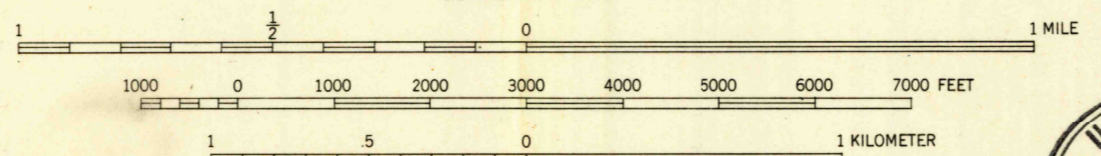
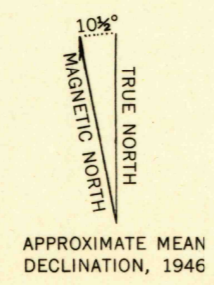
UNITED STATES
DEPARTMENT OF THE INTERIOR
GEOLOGICAL SURVEY

WAYMART QUADRANGLE
PENNSYLVANIA
7.5 MINUTE SERIES (TOPOGRAPHIC)

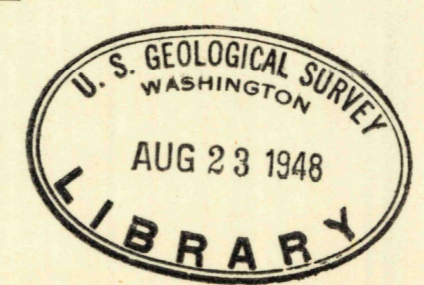
(ALDENVILLE)



Mapped, edited, and published by the Geological Survey
Control by USGS
Topography from aerial photographs by multiplex methods
Aerial photographs taken 1942. Field check, 1946
Polyconic projection, 1927 North American datum
10000-foot grid based on Pennsylvania coordinate system,
north zone



THIS MAP COMPLIES WITH NATIONAL MAP ACCURACY STANDARDS
FOR SALE BY U. S. GEOLOGICAL SURVEY, WASH. 25, D. C.



ROAD CLASSIFICATION

HARD-SURFACE ALL WEATHER ROADS	DRY WEATHER ROADS
Heavy-duty	Improved dirt
Medium-duty	Unimproved dirt
Loose-surface or narrow hard-surface	State Route
	U. S. Route

WAYMART, PA.
N4130-W7522.5/7.5
PRINTED 1948

