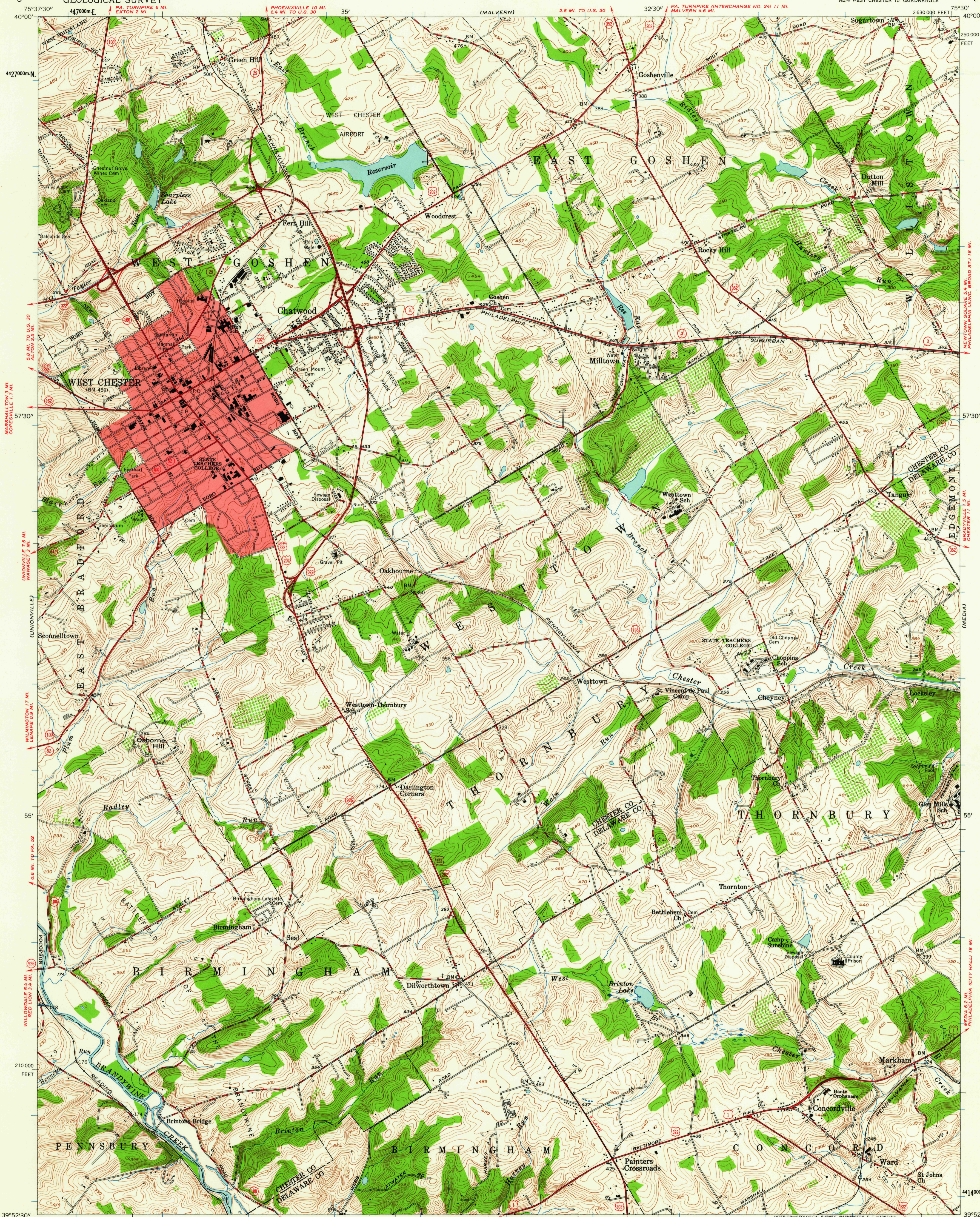
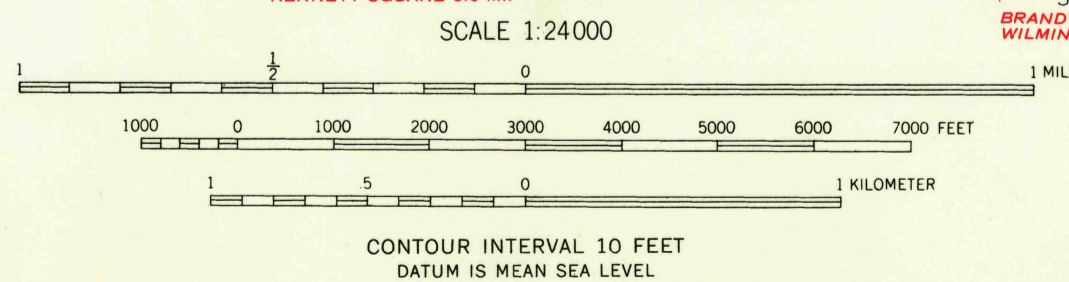


UNITED STATES  
DEPARTMENT OF THE INTERIOR  
GEOLOGICAL SURVEY

WEST CHESTER QUADRANGLE  
PENNSYLVANIA  
7.5 MINUTE SERIES (TOPOGRAPHIC)  
NE 1/4 WEST CHESTER 15' QUADRANGLE

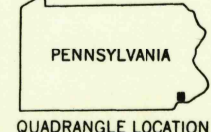


Mapped, edited, and published by the Geological Survey  
Control by USGS, USC&GS, and Pennsylvania Dept. of Highways  
Topography from aerial photographs by photogrammetric  
methods. Aerial photographs taken 1950. Field check 1954  
Polyconic projection. 1927 North American datum  
10,000-foot grid based on Pennsylvania coordinate system,  
south zone  
Red tint indicates areas in which only  
landmark buildings are shown  
Unchecked elevations are shown in brown  
1000-meter Universal Transverse Mercator grid ticks,  
zone 18, shown in blue



USGS  
HISTORICAL FILE  
TOPOGRAPHIC DIVISION

ROAD CLASSIFICATION  
Heavy-duty ——— Light-duty ———  
Medium-duty ——— Unimproved dirt ———  
U.S. Route ——— State Route ———



WEST CHESTER, PA.  
NE 1/4 WEST CHESTER 15' QUADRANGLE  
N 3952.5 - W 7530.7.5

1954

THIS MAP COMPLIES WITH NATIONAL MAP ACCURACY STANDARDS  
FOR SALE BY U. S. GEOLOGICAL SURVEY, WASHINGTON 25, D. C.  
A FOLDER DESCRIBING TOPOGRAPHIC MAPS AND SYMBOLS IS AVAILABLE ON REQUEST

FEB 12 1963