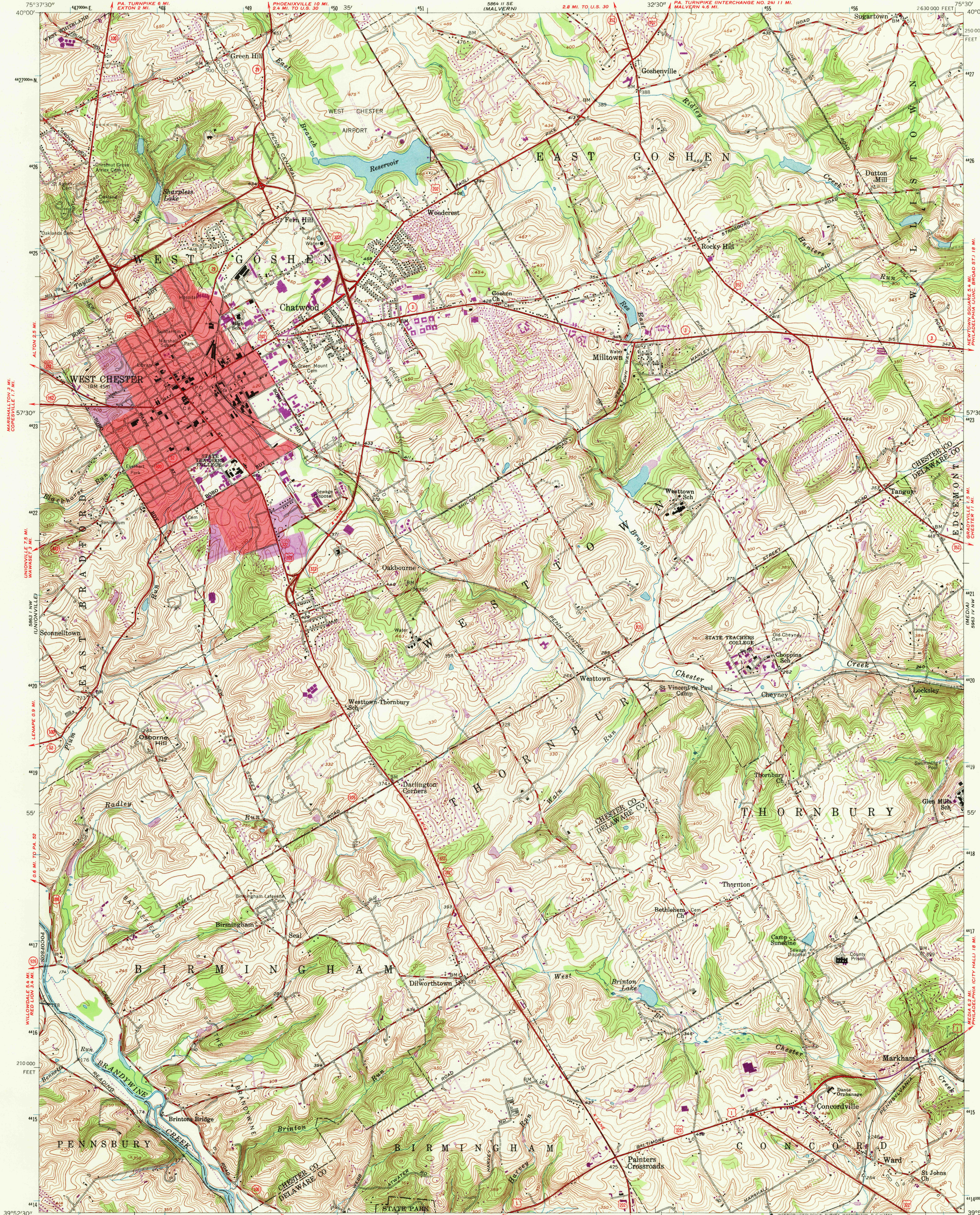


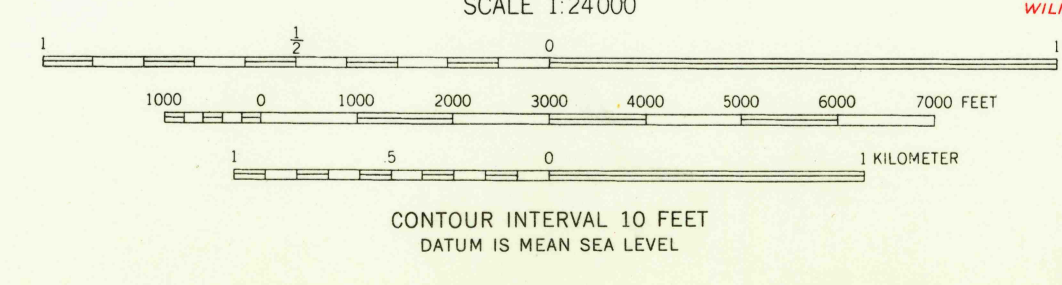
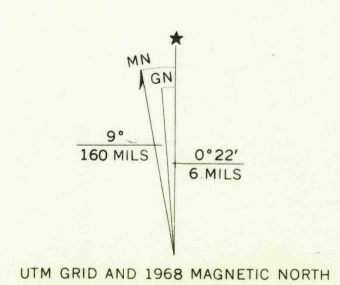
UNITED STATES
DEPARTMENT OF THE INTERIOR
GEOLOGICAL SURVEY

WEST CHESTER QUADRANGLE
PENNSYLVANIA
7.5 MINUTE SERIES (TOPOGRAPHIC)

NE 1/4 WEST CHESTER 15' QUADRANGLE



Mapped, edited, and published by the Geological Survey
Control by USGS, USC&GS, and Pennsylvania Dept. of Highways
Topography from aerial photographs by photogrammetric methods. Aerial photographs taken 1950. Field check 1954
Polyconic projection. 1927 North American datum
10,000-foot grid based on Pennsylvania coordinate system, south zone
1000-meter Universal Transverse Mercator grid ticks, zone 18, shown in blue
Red tint indicates areas in which only landmark buildings are shown
Revisions shown in purple compiled in cooperation with State of Pennsylvania agencies, from aerial photographs taken 1968. This information not field checked
Purple tint indicates extension of urban areas



USGS
HISTORICAL FILE
TOPOGRAPHIC DIVISION

ROAD CLASSIFICATION
Heavy-duty ——— Light-duty ———
Medium-duty ——— Unimproved dirt ———
U.S. Route ——— State Route ———

PENNSYLVANIA
QUADRANGLE LOCATION
U.S.G.S.
FILE COPY
TOPOGRAPHIC DIVISION

WEST CHESTER, PA.
NE 1/4 WEST CHESTER 15' QUADRANGLE
N 3952.5 - W 7530.7
1954
PHOTOREVISED 1968
AMS 5863 I NE—SERIES V831

THIS MAP COMPLIES WITH NATIONAL MAP ACCURACY STANDARDS
FOR SALE BY U.S. GEOLOGICAL SURVEY, WASHINGTON, D.C. 20242
A FOLDER DESCRIBING TOPOGRAPHIC MAPS AND SYMBOLS IS AVAILABLE ON REQUEST

MAR 6 1969

5145