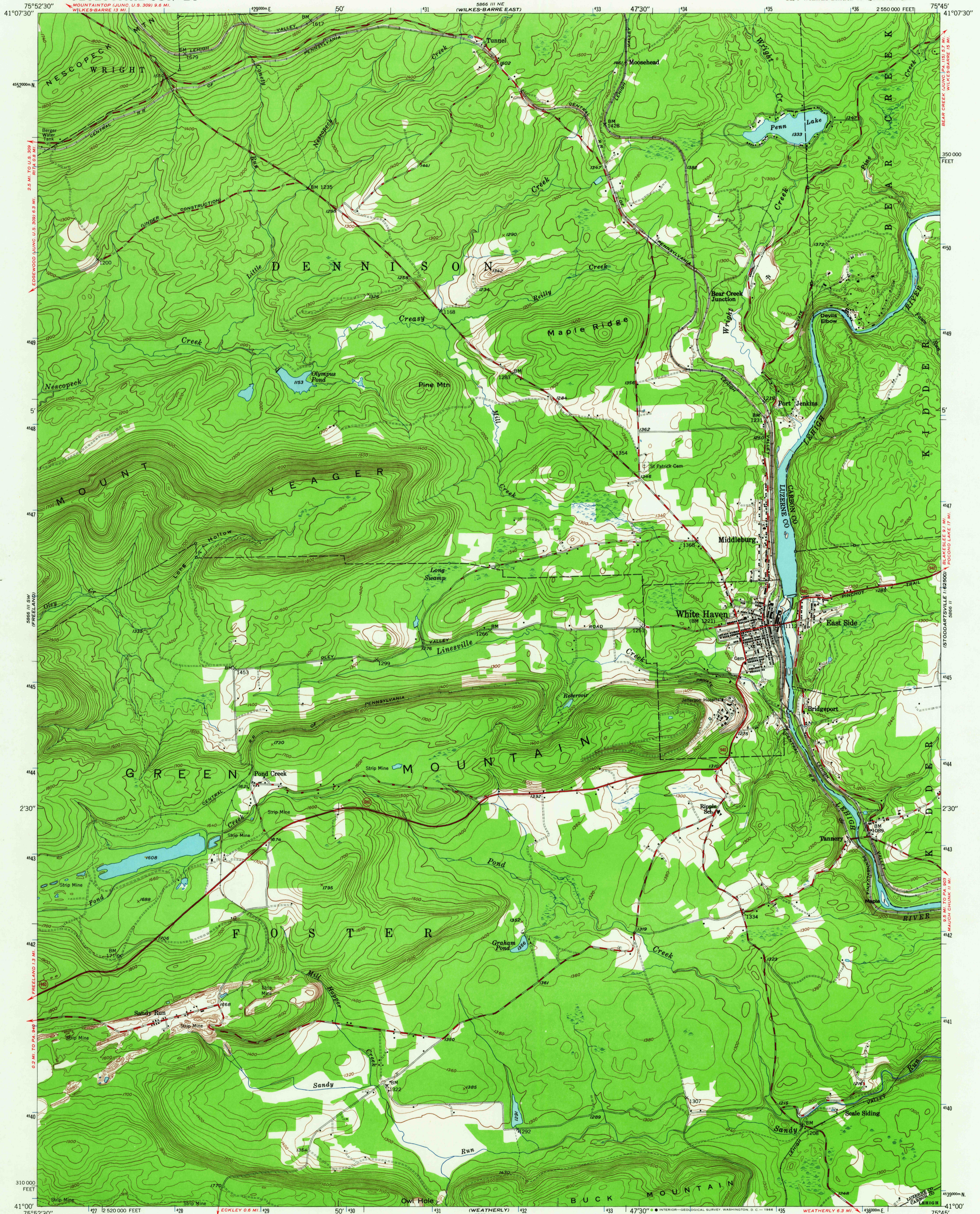
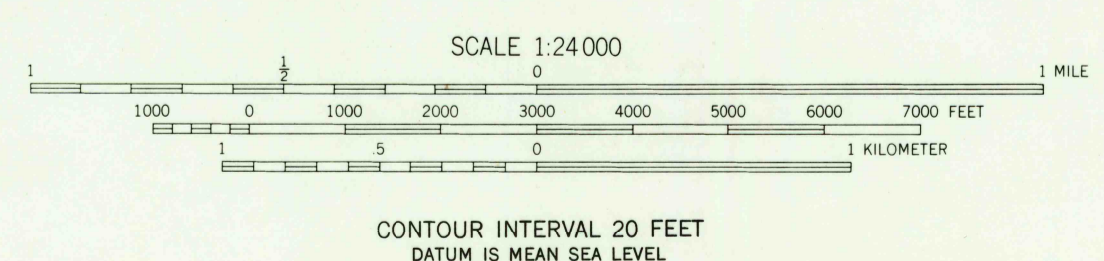
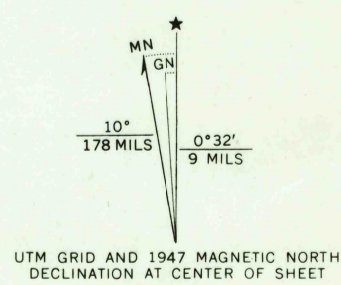


UNITED STATES
DEPARTMENT OF THE INTERIOR
GEOLOGICAL SURVEY

WHITE HAVEN QUADRANGLE
PENNSYLVANIA
7.5 MINUTE SERIES (TOPOGRAPHIC)
SE/4 WILKES-BARRE 15' QUADRANGLE



Mapped, edited, and published by the Geological Survey
Control by USGS and USC&GS
Topography from aerial photographs by multiple methods
Aerial photographs taken 1942. Field check 1947
Polyconic projection. 1927 North American datum
10,000-foot grid based on Pennsylvania coordinate system,
north zone
Contours in strip mine areas compiled from 1942 photography
1000-meter Universal Transverse Mercator grid ticks,
zone 18, shown in blue



USGS
HISTORICAL FILE
TOPOGRAPHIC DIVISION

ROAD CLASSIFICATION

HARD-SURFACE ALL WEATHER ROADS	DRY WEATHER ROADS
Heavy-duty LANE LANE	Improved dirt
Medium-duty LANE LANE	Unimproved dirt
Loose-surface, graded, or narrow hard-surface	
U. S. Route	State Route

U.S.G.S.
FILE COPY
TOPOGRAPHIC DIVISION

WHITE HAVEN, PA.
SE/4 WILKES-BARRE 15' QUADRANGLE
N4100-W7545/7.5
1947
AMS 5866 III SE-SERIES V831

DEC 22 1965