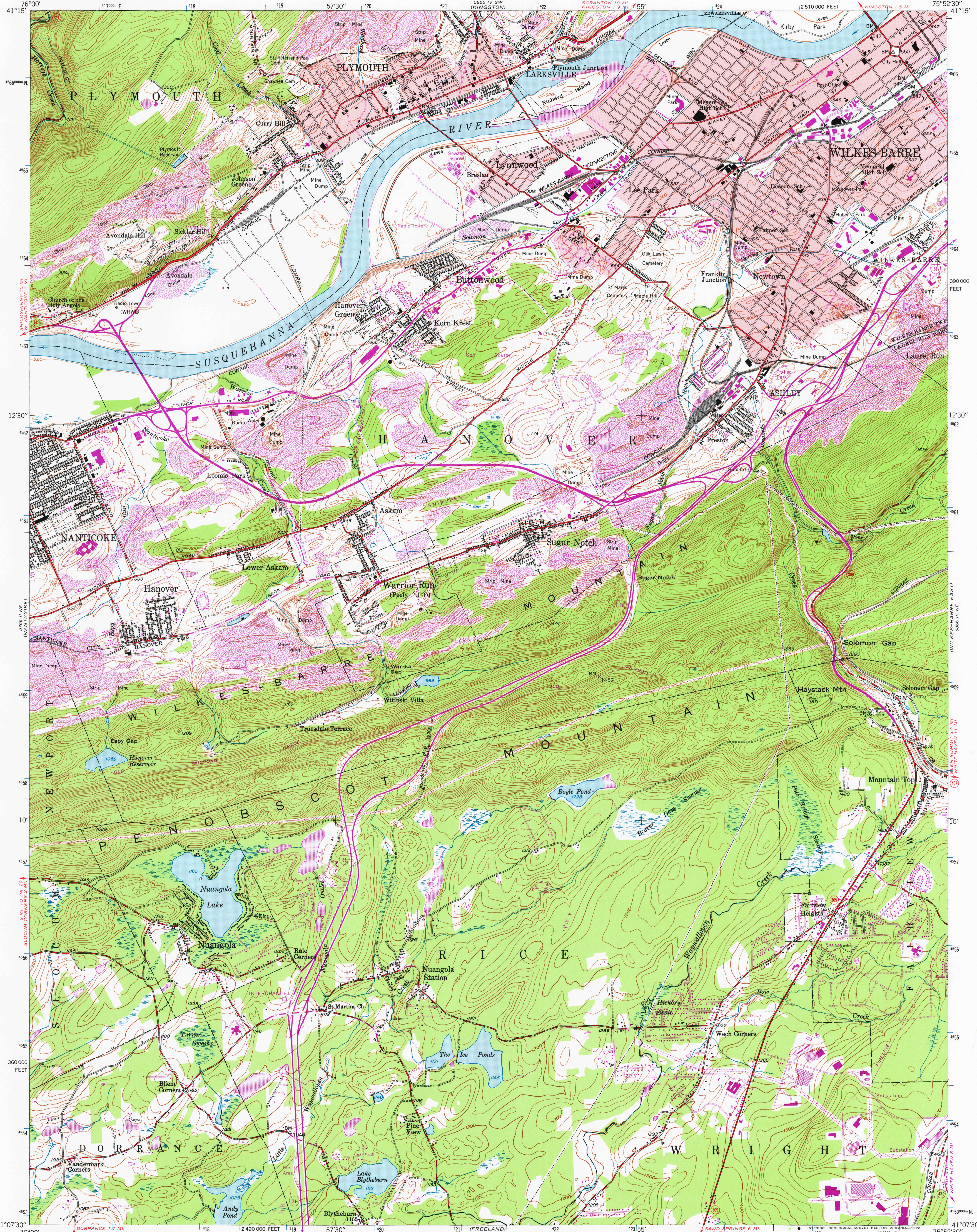
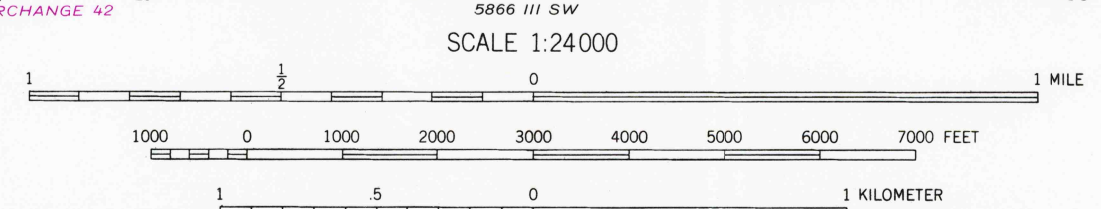
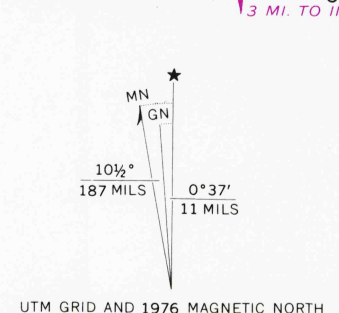


UNITED STATES
DEPARTMENT OF THE INTERIOR
GEOLOGICAL SURVEY

WILKES-BARRE WEST QUADRANGLE
PENNSYLVANIA-LUZERNE CO.
7.5 MINUTE SERIES (TOPOGRAPHIC)
NW/4 WILKES-BARRE 15' QUADRANGLE

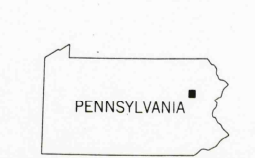


Mapped, edited, and published by the Geological Survey
Control by USGS and USC&GS
Topography by photogrammetric methods from aerial photographs
taken 1942. Field checked 1947
Polyconic projection. 1927 North American datum
10,000-foot grid based on Pennsylvania coordinate system, north zone
1000-meter Universal Transverse Mercator grid ticks, zone 18,
shown in blue
Red tint indicates areas in which only landmark buildings are shown
Revisions shown in purple compiled in cooperation with
State of Pennsylvania agencies, from aerial photographs
taken 1969 and 1976. This information not field checked



CONTOUR INTERVAL 20 FEET
NATIONAL GEODETIC VERTICAL DATUM OF 1929

THIS MAP COMPLIES WITH NATIONAL MAP ACCURACY STANDARDS
FOR SALE BY U.S. GEOLOGICAL SURVEY, RESTON, VIRGINIA 22092
A FOLDER DESCRIBING TOPOGRAPHIC MAPS AND SYMBOLS IS AVAILABLE ON REQUEST



ROAD CLASSIFICATION
Heavy-duty ——— Light-duty ———
Medium-duty ——— Unimproved dirt ———
Interstate Route U.S. Route State Route

USGS
Historical File
Topographic Division

WILKES-BARRE WEST, PA. AUG 30 1978
NW/4 WILKES-BARRE 15' QUADRANGLE
N4107.5-W7552.5/7.5
1947
PHOTOREVIEWED 1969 AND 1976
AMS 5866 III NW-SERIES V831