

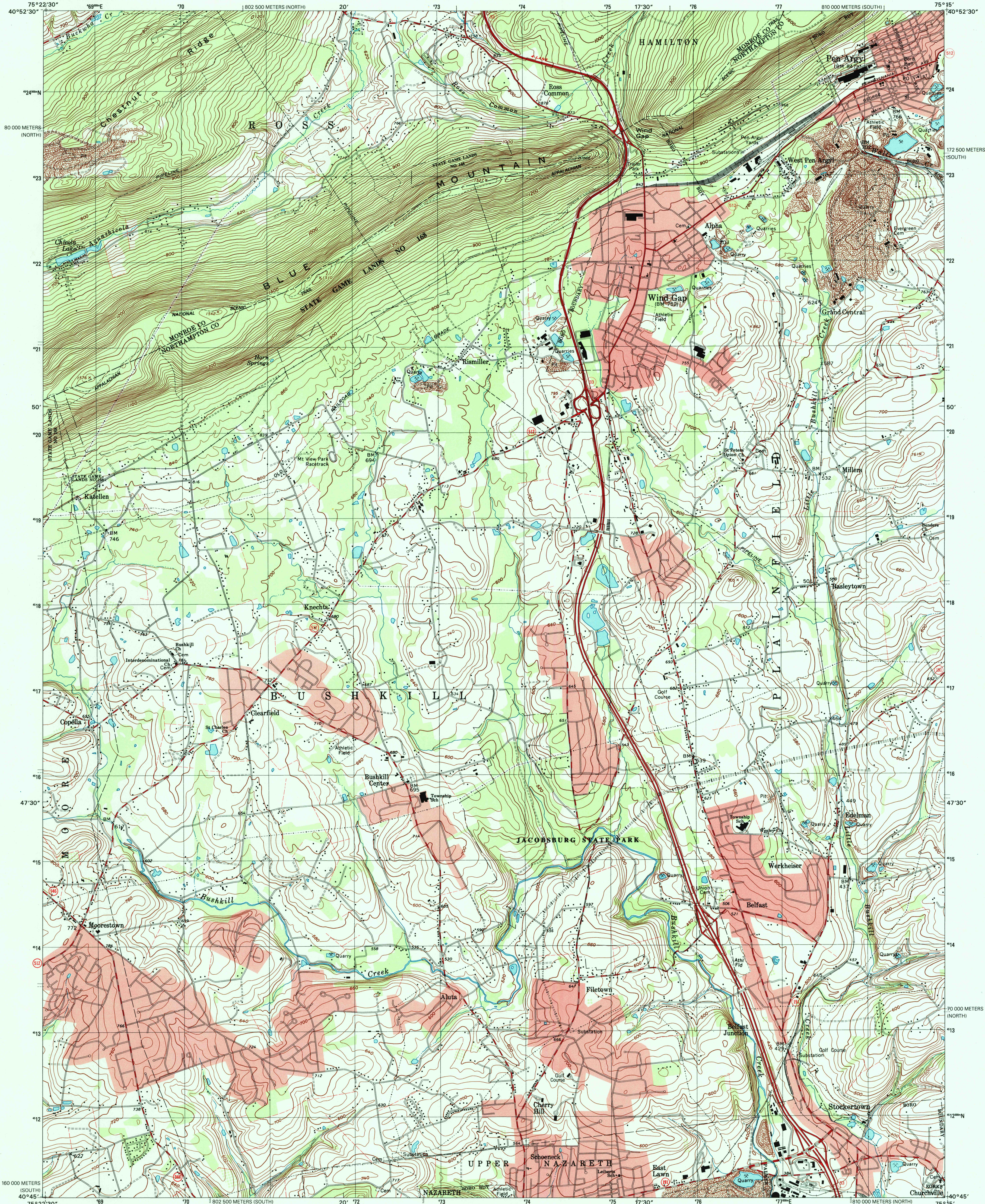


U.S. DEPARTMENT OF THE INTERIOR
U.S. GEOLOGICAL SURVEY

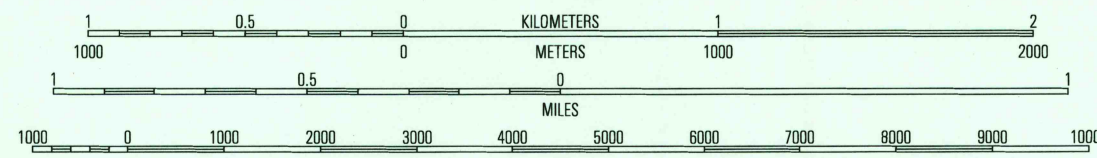
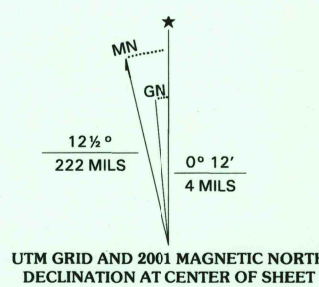


COMMONWEALTH OF PENNSYLVANIA
DEPARTMENT OF CONSERVATION AND NATURAL RESOURCES
BUREAU OF TOPOGRAPHIC AND GEOLOGIC SURVEY

WIND GAP QUADRANGLE
PENNSYLVANIA
7.5-MINUTE SERIES (TOPOGRAPHIC)



Produced by the United States Geological Survey
in cooperation with Pennsylvania Department of
Conservation and Natural Resources, Bureau of
Topographic and Geologic Survey
Topography compiled 1999. Planimetry derived from imagery
taken 1999 and other sources. Survey control current as of 1960
Boundaries current as of 2001
North American Datum of 1983 (NAD 83). Projection and
1000-meter grid: Universal Transverse Mercator, zone 18
2,500-meter ticks: Pennsylvania Coordinate System of 1983
(south and north zones)
North American Datum of 1927 (NAD 27) is shown by dashed
corner ticks. The values of the shift between NAD 83 and
NAD 27 for 7.5-minute intersections are obtainable from
National Geodetic Survey NADCON software
There may be private inholdings within the boundaries of the
National or State reservations shown on this map
Houses of worship, schools, and other labeled buildings verified 1960



CONTOUR INTERVAL 20 FEET
NATIONAL GEODETIC VERTICAL DATUM OF 1929
(TO CONVERT ELEVATIONS TO THE NORTH AMERICAN VERTICAL DATUM OF 1988, SUBTRACT 1 FOOT)
TO CONVERT FROM FEET TO METERS, MULTIPLY BY 0.3048



ROAD CLASSIFICATION
Primary highway
hard surface
Secondary highway
hard surface
Light-duty road, hard or
improved surface
Unimproved road
Interstate Route
U.S. Route
State Route

1	2	3
4	5	6
7	8	9

WIND GAP, PA
1999

NIMA 5695 IV SE-SERIES V831



RECEIVED
OCT 31 2001
USGS NWL
HISTORICAL MAP ARCHIVES