

U. S. G. S.
FILE COPY
Inspection and Editing.

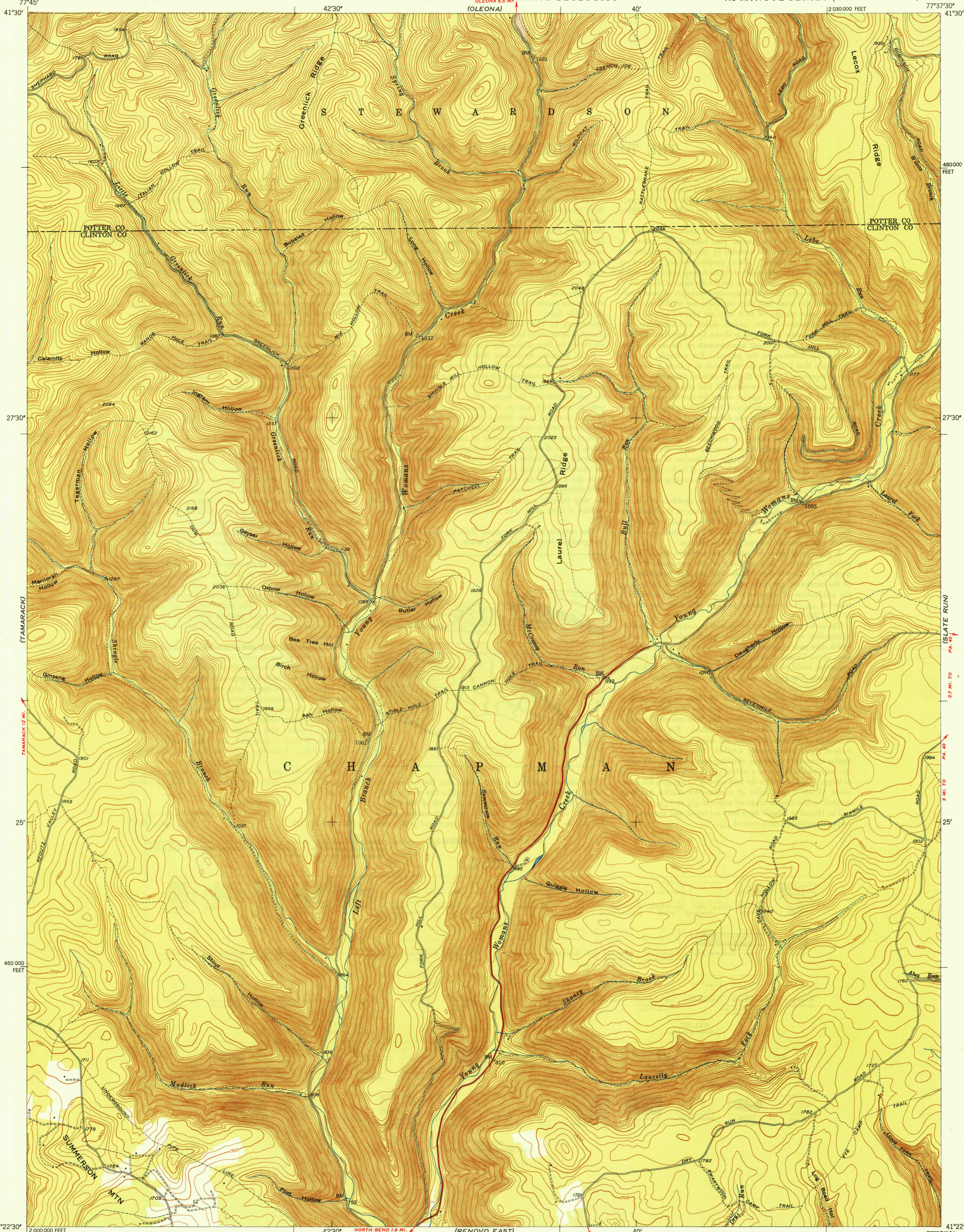
UNITED STATES
DEPARTMENT OF THE INTERIOR
GEOLOGICAL SURVEY

STATE OF PENNSYLVANIA
DEPARTMENT OF INTERNAL AFFAIRS
WILLIAM S. LIVENGOOD, JR., SECRETARY
TOPOGRAPHIC AND GEOLOGIC SURVEY
STANLEY HOLMAN CATHART, STATE GEOLOGIST

YOUNG WOMANS CREEK QUADRANGLE
PENNSYLVANIA
7.5 MINUTE SERIES (TOPOGRAPHIC)

(SHORT RUN)

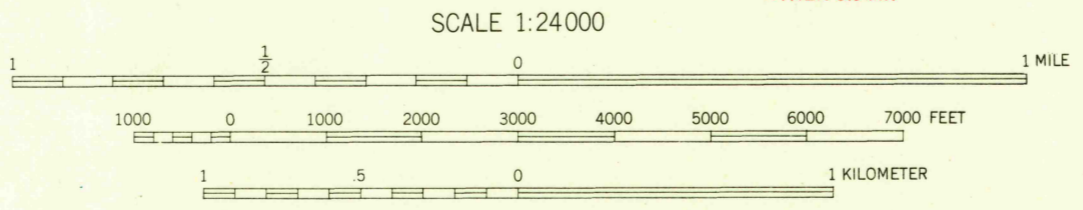
(LEETONIA)



U. S. G. S.
FILE COPY
Inspection and Editing.

U. S. G. S.
FILE COPY
Inspection and Editing.

Mapped, edited, and published by the Geological Survey
Control by USGS and USC&GS
Topography from aerial photographs by multiplex methods
Aerial photographs taken 1944. Field check 1946
Polyconic projection. 1927 North American datum
10,000-foot grid based on Pennsylvania coordinate system,
north zone



USGS
HISTORICAL FILE
TOPOGRAPHIC DIVISION

ROAD CLASSIFICATION
HARD-SURFACE ALL WEATHER ROADS DRY WEATHER ROADS
Heavy-duty. **2 LANE LANE** Improved dirt
Medium-duty. **4 LANE LANE** Unimproved dirt
Loose-surface, graded, or narrow hard-surface
U. S. Route State Route

U. S. G. S.
FILE COPY
Inspection and Editing.

YOUNG WOMANS CREEK, PA.
N4122.5-W7737.5/7.5

PRINTED 1949

THIS MAP COMPLIES WITH NATIONAL MAP ACCURACY STANDARDS
FOR SALE BY U. S. GEOLOGICAL SURVEY, WASHINGTON 25, D. C.

JUN 2 1 1949

2195