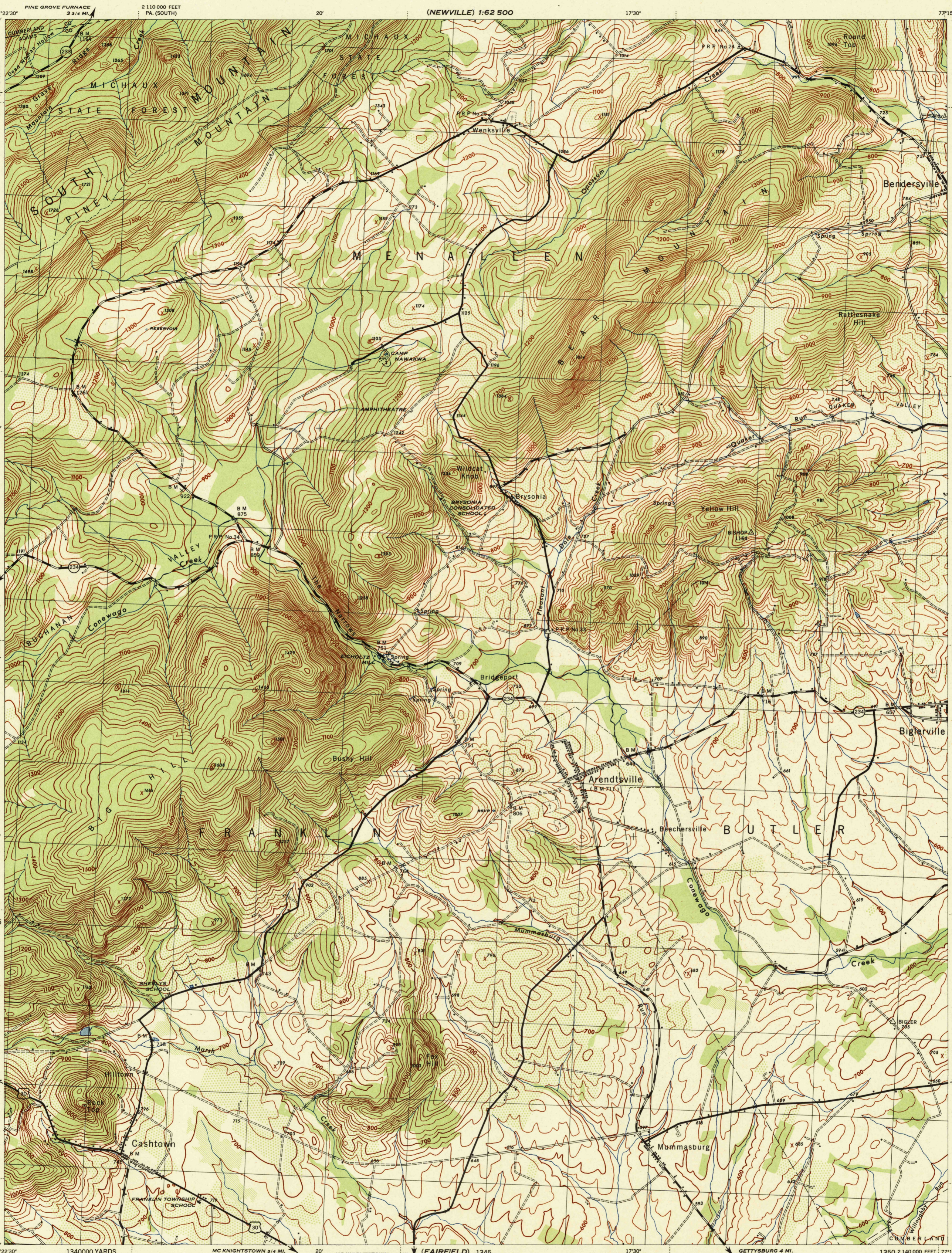


(NEWVILLE) 1:62,500

(CARLISLE) 1:62,500



Prepared by U. S. Department of Agriculture, Forest Service, under the direction of the Chief of Engineers, U. S. Army, 1944. Control by U. S. Coast and Geodetic Survey, U. S. Geological Survey, Soil Conservation Service and Forest Service. Topography by Forest Service stereophotogrammetric methods (KEK) plotter. Photography by Soil Conservation Service, 1943. Polyconic projection, 1927 North American datum.

ROAD CLASSIFICATION

Dependable hard-surface, heavy 500' road.	Loose-surface graded, dry weather road.	U. S. Route 110
Secondary, hard-surface, all-weather road.	Dirt road.	State Route 30
More than two lanes indicated by note along road with tick at point of change.	3 LANE, 4 LANE	

THIS MAP COMPLIES WITH THE NATIONAL STANDARD MAP ACCURACY REQUIREMENTS.

Scale 1:31,680

1 1/2 Miles
1000 500 0 1000 2000 Yards

CONTOUR INTERVAL 20 FEET
DATUM IS MEAN SEA LEVEL (1929 ADJ.)

ONE THOUSAND YARD GRID COMPUTED FROM 'GRID SYSTEM FOR PROGRESSIVE MAPS IN THE U. S. ZONE U. S. C. & G. S. SPECIAL PUBLICATION NO. 59' THE LAST THREE DIGITS OF THE GRID NUMBERS ARE OMITTED.

TEN THOUSAND FOOT GRID BASED ON PENNSYLVANIA (SOUTH ZONE) PLANE COORDINATE SYSTEM

NOTE: OFFICERS USING THIS MAP WILL MARK PERSON CORRECTIONS AND ADDITIONS WHICH COME TO THEIR ATTENTION AND MAIL DIRECT TO 'THE CHIEF OF ENGINEERS, WASHINGTON, D. C.'

USGS
Historical File
Topographic Division

APPROXIMATE MEAN DECLINATION 1844
NO ANNUAL MAGNETIC CHANGE

SOIL CONSERVATION SERVICE, WASHINGTON, D. C. AMS NO. 120491
1944

ARENDSVILLE, PA.
N3952.5-W7715.75

(IRON SPRINGS)

(GETTYSBURG)