

JUNC. U. S. NO. 122 1.6 MI.

POTTSVILLE (JUNC. U. S. NO. 209) 10.5 MI.
SCHUYLKILL HAVEN (JUNC. STATE NO. 83) 7 MI.

PENNSYLVANIA
AUBURN QUADRANGLE
7 1/2-MINUTE SERIES

(Hamburg)
62500

UNITED STATES
DEPARTMENT OF THE INTERIOR
GEOLOGICAL SURVEY

WAR DEPARTMENT
CORPS OF ENGINEERS, U. S. ARMY

(Orwigsburg)

(Reading)
62500

76° 07' 30"

470000
FEET

BROMHART TOWN 1.6 MI.

PINE GROVE 1.5 MI.
SUMMIT STATION 4.8 MI.

35°

(Friedensburg)

32° 30'

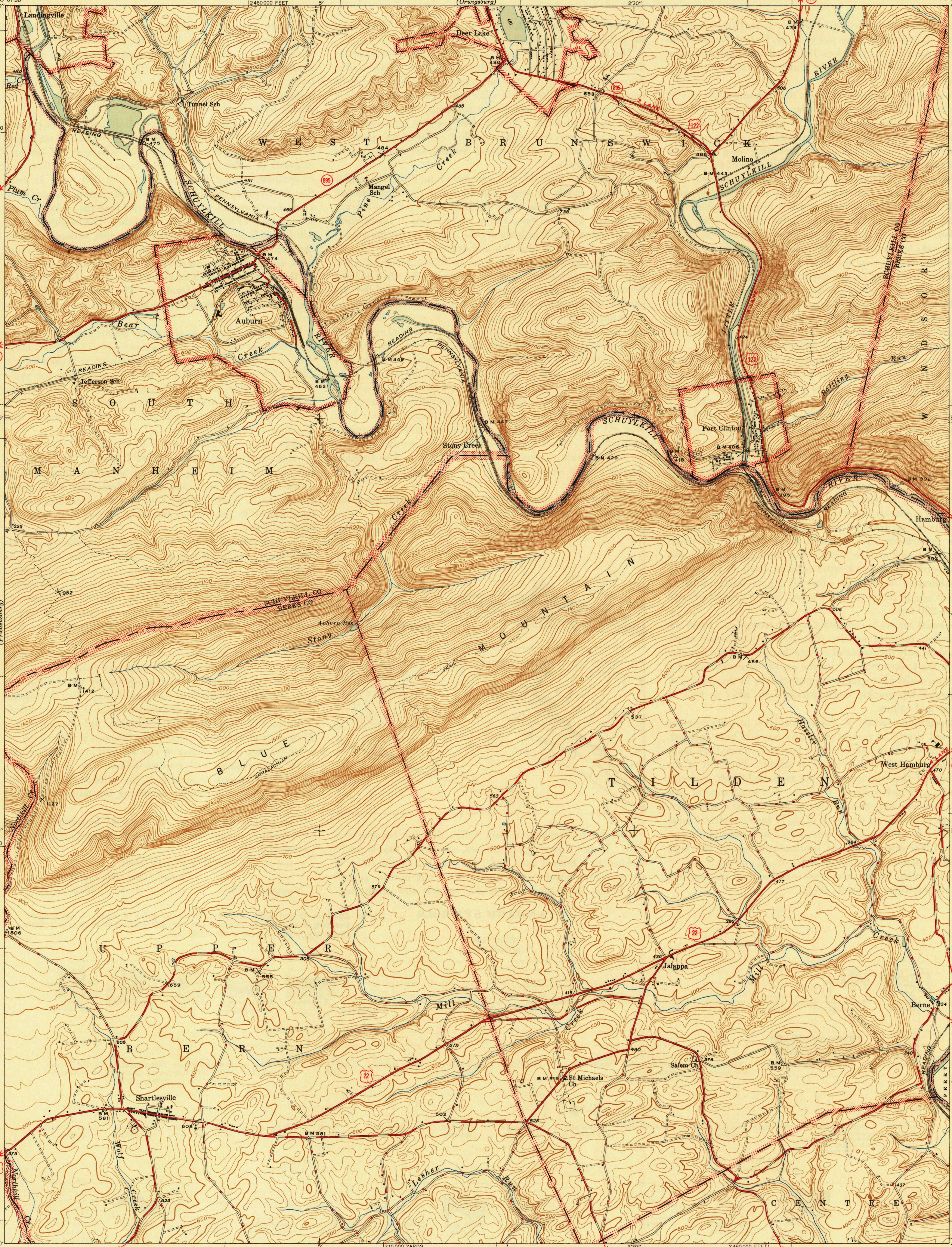
2010000
YARDS

HAMBURG 2.5 MI.
FREDERICKSBURG 1.5 MI.
STRAUSTOWN 3.4 MI.

40° 30'

76° 07' 30"

(Wernersville)
62500



HAMBURG 1.5 MI.
READING 1.5 MI.

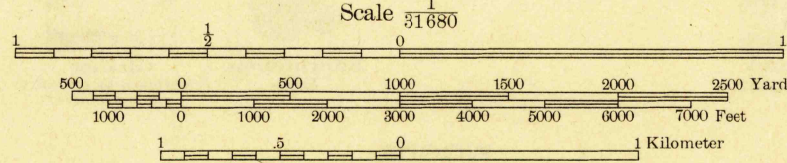
HAMBURG 1 MI.
ALLENTOWN 2.5 MI.

SHOEMAKERS 2.5 MI.

(Reading)
62500

Mapped by the Geological Survey
1945 JUNC. STATE NO. 83 4.7 MI.

TRUE NORTH
MAGNETIC NORTH
APPROXIMATE MEAN
DECLINATION, 1945



Contour interval 20 feet
Datum is mean sea level

ROAD CLASSIFICATION
1946
Dependable hard-surface
Heavy-duty road
Secondary hard-surface
all-weather road
More than two lanes indicated along road with tick at point of change
Dry weather roads
Loose-surface graded
Unsurfaced, graded
Dirt road
U. S. Route (15)
State Route (22)
AUBURN, PA.
Edition of 1946
N4030 W7600/7.5

Board on Geographic Names
Date APR 21 1946