

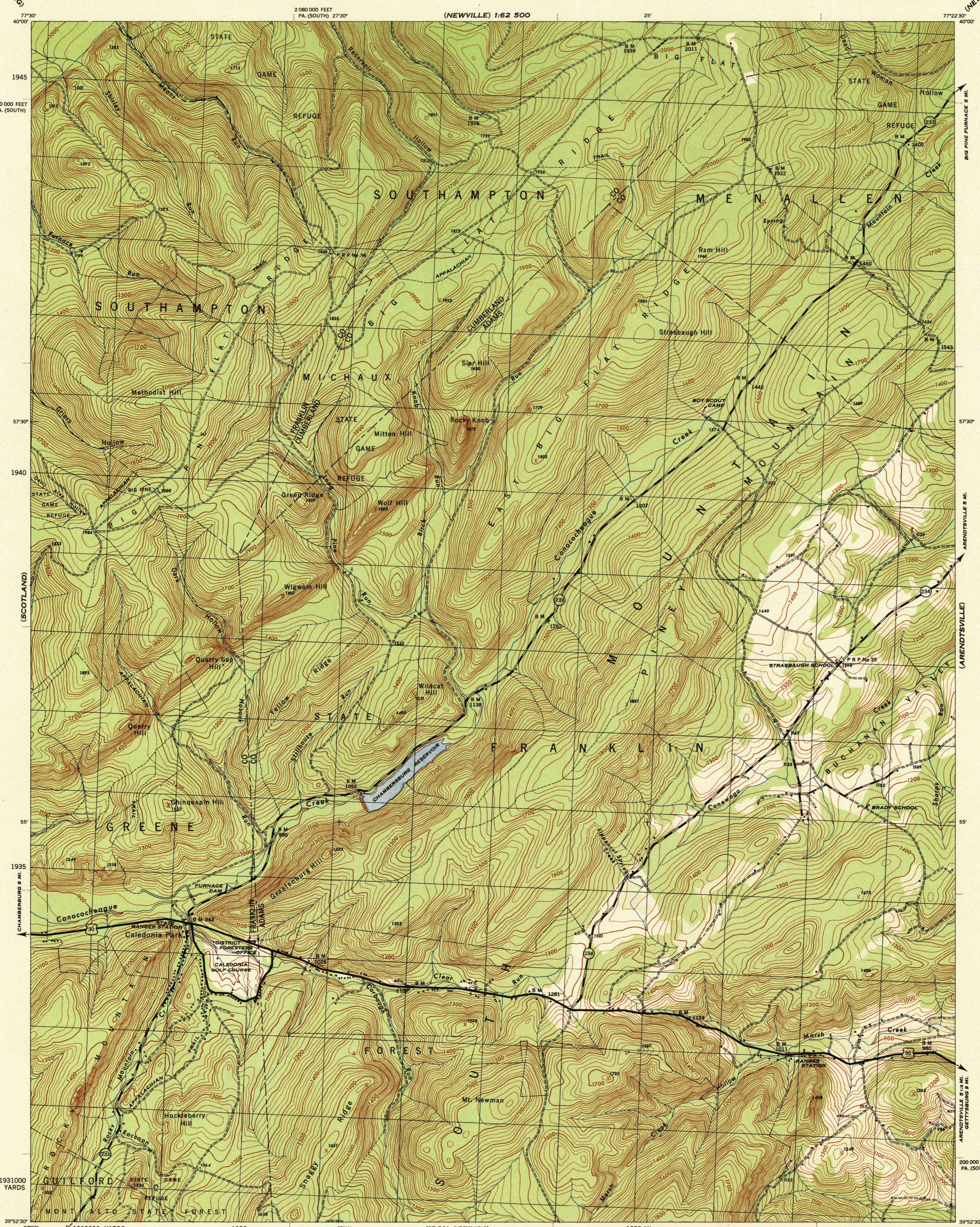
SHIPPENSBURG
1:62,500

PENNSYLVANIA 1:31,680

WAR DEPARTMENT
CORPS OF ENGINEERS, U. S. ARMY

FLAT RIDGE QUADRANGLE
7 1/2 - MINUTE SERIES

(NEWVILLE) 1:62,500



Prepared by U. S. Department of Agriculture, Forest Service, under the direction of the Chief of Engineers, U. S. Army, 1944.
 Control by U. S. Coast and Geodetic Survey, U. S. Geological Survey, Soil Conservation Service and Forest Service.
 Topography by Forest Service stereophotogrammetric methods KEK plotter.
 Photography by Soil Conservation Service, 1943.
 Polyconic projection, 1927 North American datum.

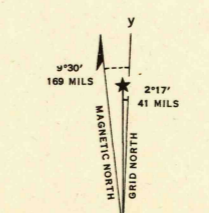
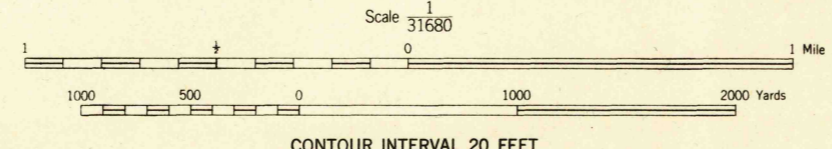
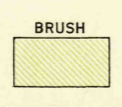
ROAD CLASSIFICATION

Dependable hard-surface, heavy-duty road. Loose-surface graded, dry weather road. U. S. Route (180)

Secondary hard-surface, all-weather road. Dirt road. State Route (39)

More than two lanes indicated by note along road with tick at point of change. LANE & LANE

THIS MAP COMPLIES WITH THE NATIONAL STANDARD MAP ACCURACY REQUIREMENTS.



USGS
Historical File
Topographic Division

CALEDONIA PARK
FLAT RIDGE, PA.
N3952.5-W7722.5/7.5

U. S. G. S.
FILE COPY
Inspection and Editing

Chg. to 8/13/57