

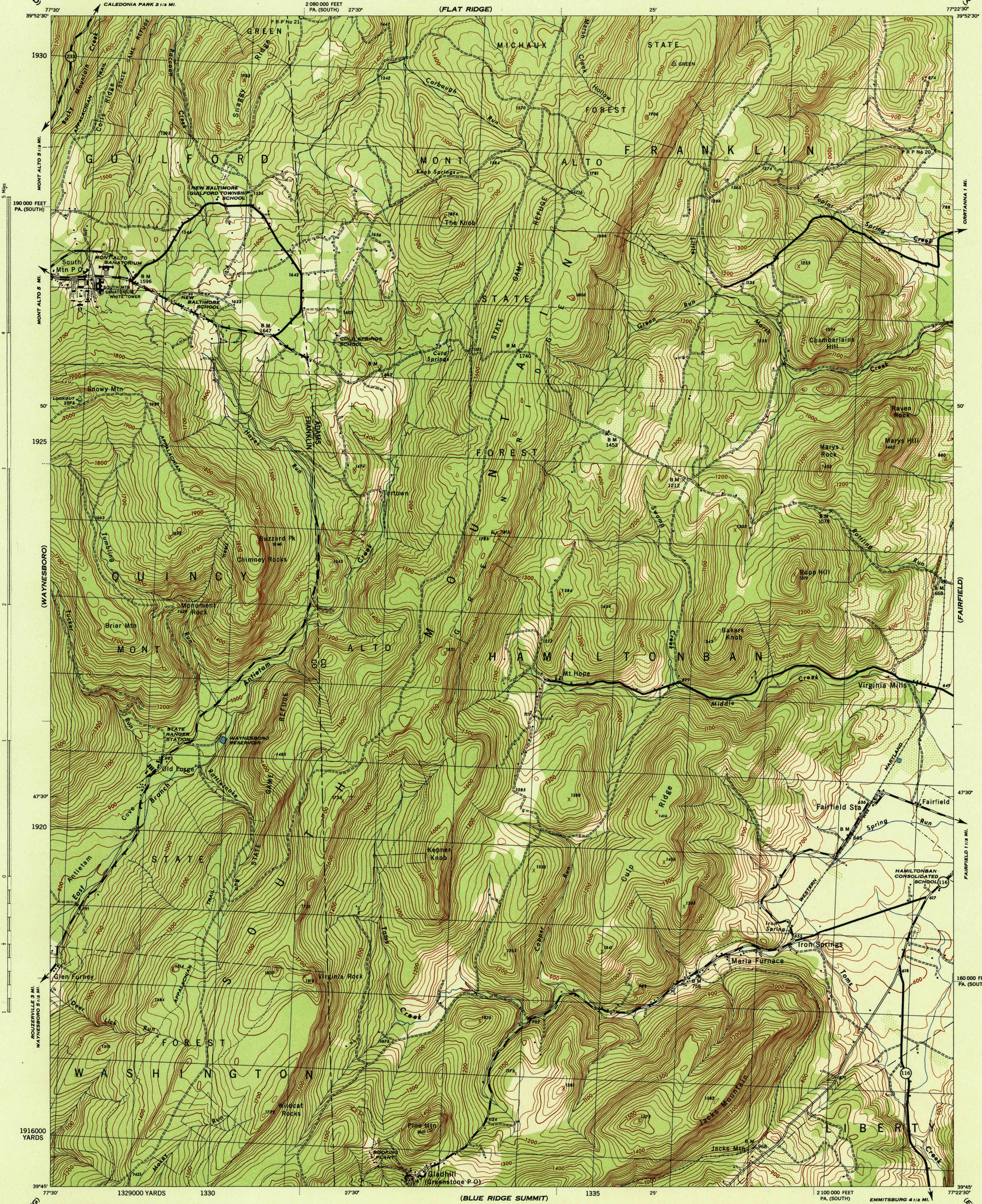
(SCOTLAND)

PENNSYLVANIA 1:31,680

WAR DEPARTMENT
CORPS OF ENGINEERS, U. S. ARMY

IRON SPRINGS QUADRANGLE
7 1/2 - MINUTE SERIES

(LARENDSVILLE)



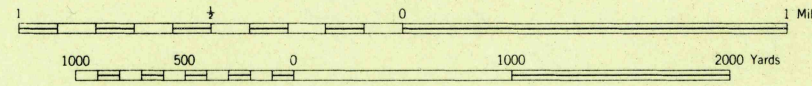
(SMITHSBURG)

Prepared by U. S. Department of Agriculture, Forest Service, under the direction of the Chief of Engineers, U. S. Army, 1944. Control by U. S. Coast and Geodetic Survey, U. S. Geological Survey, Soil Conservation Service and Forest Service. Topography by Forest Service stereophotogrammetric methods KEK plotter. Photography by Soil Conservation Service, 1943. Polyconic projection, 1927 North American datum.

ROAD CLASSIFICATION

Dependable hard-surface, heavy-duty road. U. S. Route 100
 Loose-surface graded, dry weather road. U. S. Route 100
 Secondary, hard-surface, all-weather road. Dirt road. State Route 30
 More than two lanes indicated by note along road with tick at point of change. 3 LANE 1/2 LANE

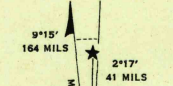
THIS MAP COMPLIES WITH THE NATIONAL STANDARD MAP ACCURACY REQUIREMENTS.



CONTOUR INTERVAL 20 FEET
 DATUM IS MEAN SEA LEVEL (1929 ADJ.)

ONE THOUSAND YARD GRID COMPUTED FROM "GRID SYSTEM FOR PROGRESSIVE MAPS" BY THE U. S. COAST AND GEODETIC SURVEY, U. S. ARMY, 1944. SPECIAL PUBLICATION NO. 58. THE LAST THREE DIGITS OF THE GRID NUMBERS ARE OMITTED. TEN THOUSAND FOOT GRID BASED ON PENNSYLVANIA (SOUTH ZONE) PLANE COORDINATE SYSTEMS.

NOTE: OFFICERS USING THIS MAP WILL MARK HEREON CORRECTIONS AND ADDITIONS WHICH COME TO THEIR ATTENTION AND MAIL DIRECT TO THE CHIEF OF ENGINEERS, WASHINGTON, D. C.



USGS
 HISTORICAL FILE
 TOPOGRAPHIC DIVISION

IRON SPRINGS, PA.
 N3945-W7722.5/7.5

U. S. G. S.
 FILE COPY
 Inspector and Editor

(EMMITSBURG)