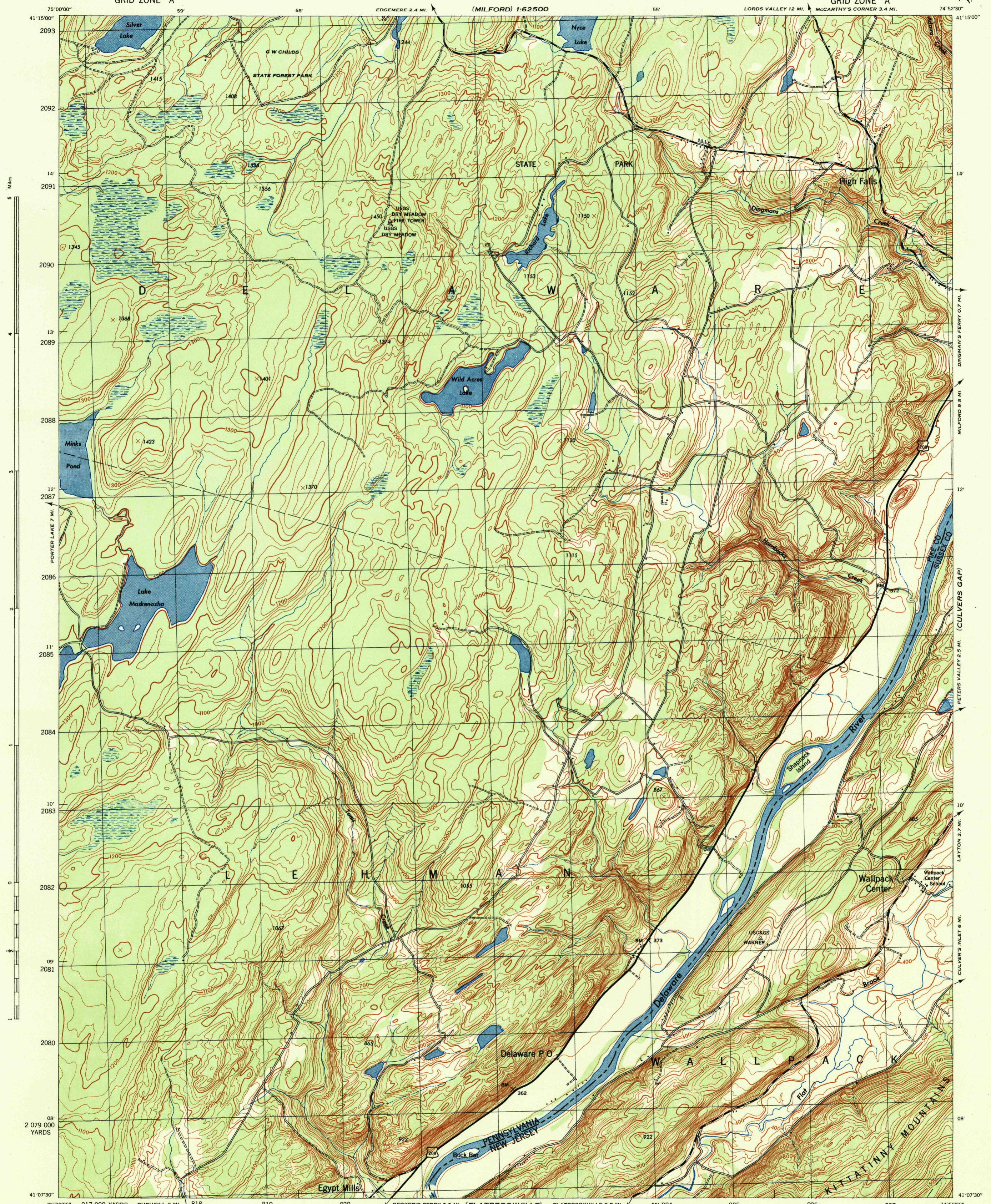


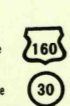
(MILFORD) 1:62,500



5 Miles
12' 2087
11' 2086
10' 2085
09' 2084
08' 2083
07' 2082
06' 2081
05' 2080
04' 2079
03' 2078
02' 2077
01' 2076
00' 2075
2 079 000
YARDS

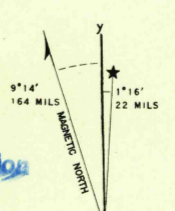
First Edition 1943
Prepared under the direction of the Chief of Engineers
U. S. Army 1942
Topography by Fairchild Aerial Surveys, Inc.
Los Angeles, California
By Stereophotogrammetric Process.
Control by U. S. Coast and Geodetic Survey
and Fairchild Aerial Surveys, Inc.
Aerial photography by Fairchild Aerial Surveys, Inc.
Polyconic Projection, North American Datum 1927

ROAD CLASSIFICATION 1943
Dependable hard-surface.
Loose-surface graded.
Secondary hard-surface.
Dirt road.
State Route
U. S. Route
More than two lanes indicated by note along road with tick at point of change.



Scale 1:31,680
1000 500 0 1000 2000 Yards
1 Mile
CONTOUR INTERVAL 20 FEET
DATUM IS MEAN SEA LEVEL
THOUSAND YARD GRID COMPUTED FROM "GRID SYSTEM FOR PROGRESSIVE MAPS
IN THE U. S. ZONE A. U. S. C. & G. S. SPECIAL PUBLICATION NO. 59
THE LAST THREE DIGITS OF THE GRID NUMBERS ARE OMITTED
NOTE: OFFICERS USING THIS MAP WILL MAKE CORRECTIONS AND NOTATIONS WHICH COME
TO THEIR ATTENTION AND MAIL DIRECT TO THE CHIEF OF ENGINEERS, WASHINGTON, D. C."

USGS
Historical File
Topographic Division



ARMY MAP SERVICE, U. S. ARMY, WASHINGTON, D. C. 10722
1943
JOINT ENGINEER BATTALION REPRODUCTION PLANT, FORT BELVOIR, VA.
1943

LAKE MASKENOZHA, PA. - N. J.
N4107.5-W7452.5/7.5

U. S. G. S.
FILE COPY
Inspection and Editing