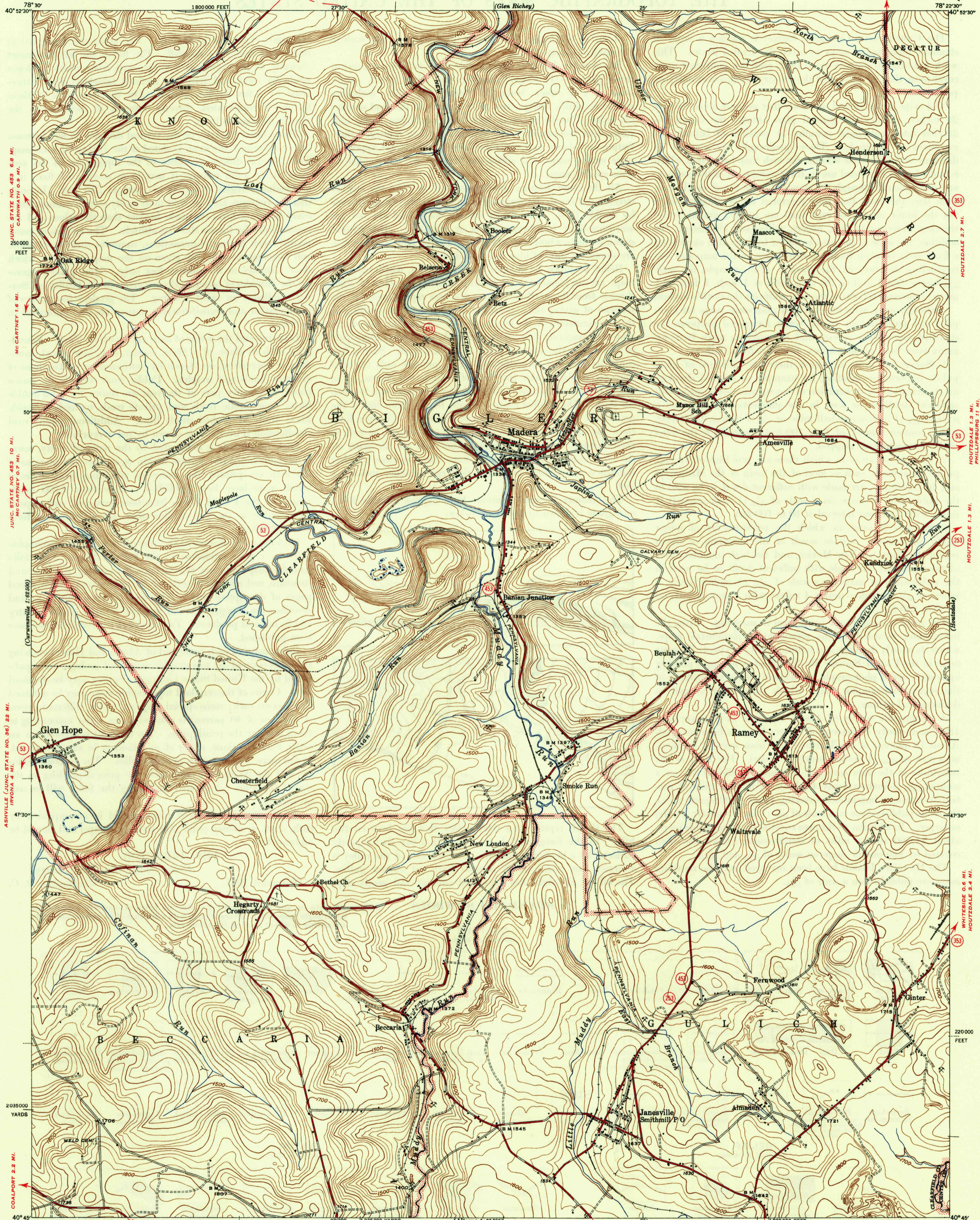


UNITED STATES
DEPARTMENT OF THE INTERIOR
GEOLOGICAL SURVEY

STATE OF PENNSYLVANIA
DEPARTMENT OF INTERNAL AFFAIRS
WILLIAM S. LIVENGOOD, JR., SECRETARY
TOPOGRAPHIC AND GEOLOGIC SURVEY
RALPH W. STONE, STATE GEOLOGIST
(Glen Richey)

MINERAL SPRINGS 11 MI.
PENNSYLVANIA
RAMEY QUADRANGLE
7 1/2-MINUTE SERIES



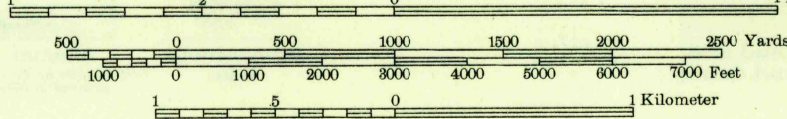
Mapped by the Geological Survey
1945

Scale 1/31680

Polyconic projection, 1927 North American datum
5000 yard grid based on U. S. zone system, B
10000 foot grid based on Pennsylvania (North)
rectangular coordinate system
JUNC. STATE NO. 855 3.2 MI.
TYRONE 11.5 MI.

ROAD CLASSIFICATION
1946
Dependable hard surface
heavy-duty road
Secondary hard-surface
all-weather road
On weather roads
Loose-surface graded
Unsurfaced, graded
Dirt road
U. S. Route (25)
State Route (53)
More than two lanes indicated along road with tick at point of change. 2 LANE, 4 LANE

APPROXIMATE MEAN
DECLINATION, 1946



Contour interval 20 feet
Datum is mean sea level

RAMEY, PA.
Edition of 1947

N4045-W7822.5/7.5

Historical File
Topographic Division