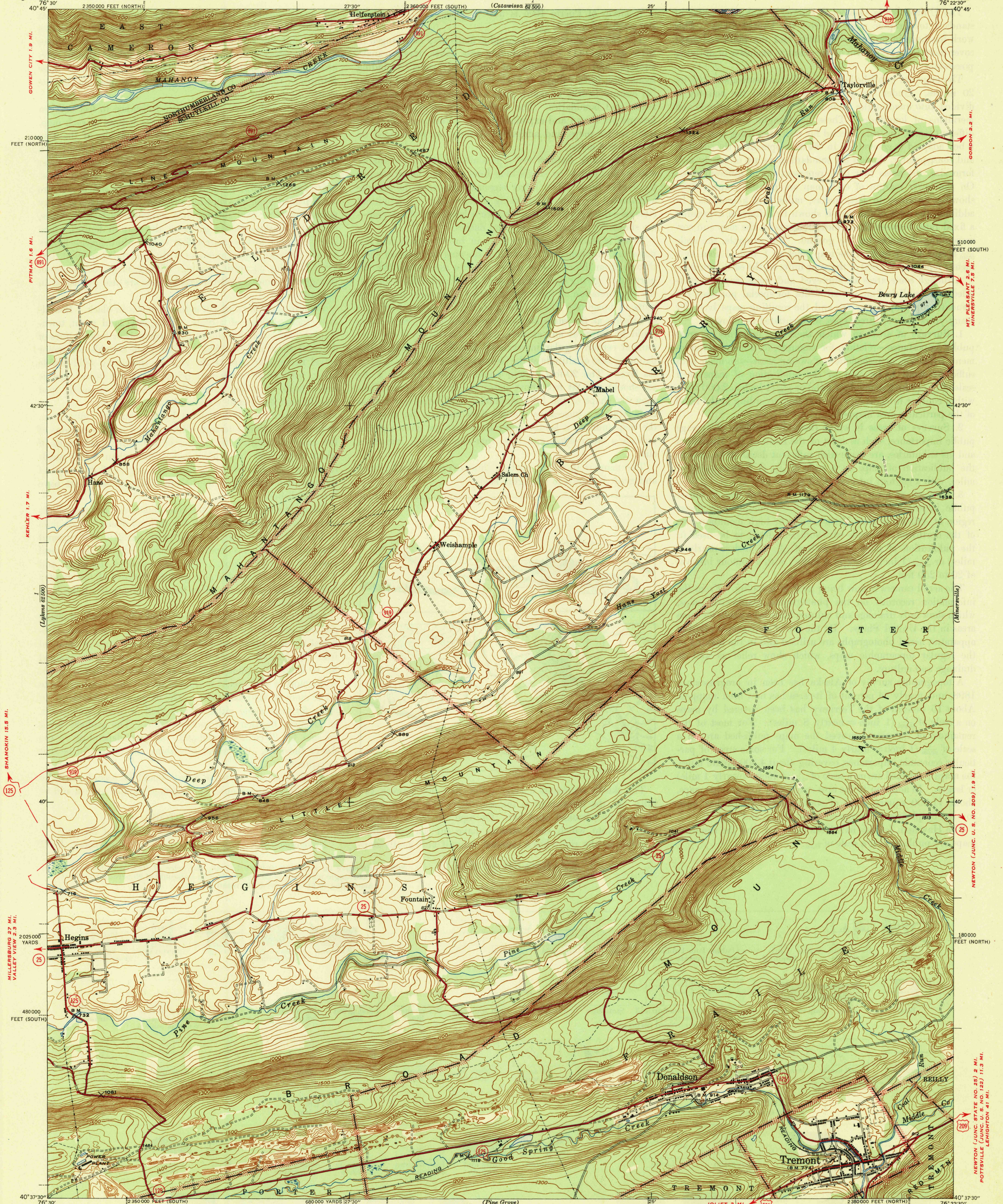


UNITED STATES
DEPARTMENT OF THE INTERIOR
GEOLOGICAL SURVEY

STATE OF PENNSYLVANIA
DEPARTMENT OF INTERNAL AFFAIRS
WILLIAM S. LIVNGOOD, JR., SECRETARY
TOPOGRAPHIC AND GEOLOGIC SURVEY
RALPH W. STONE, STATE GEOLOGIST

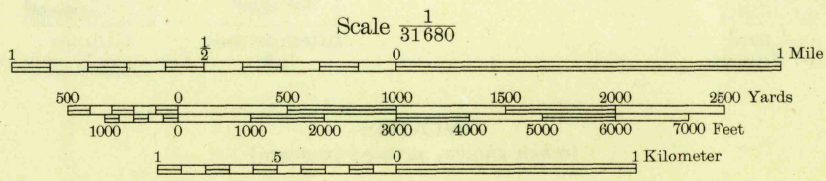
PAENSYLVANIA
TREMONT QUADRANGLE
7 1/2-MINUTE SERIES



Map by the Geological Survey
1944

ROAD CLASSIFICATION
1946
Dependable hard-surface
heavy-duty road
Secondary hard-surface
all-weather road
More than two lanes indicated along road with tick at point of change
Dry weather roads
Loose-surface graded
Unsurfaced, graded
Dirt road
U. S. Route (15)
State Route (2)

TRUE NORTH
MAGNETIC NORTH
APPROXIMATE MEAN
DECLINATION, 1944



Contour interval 20 feet
Datum is mean sea level

Polyconic projection. 1927 North American datum
5000 yard grid based on U. S. zone system, A
10000 foot grids based on Pennsylvania (North) and
Pennsylvania (South) rectangular coordinate systems

TREMONT, PA.
Edition of 1947

N4037.5-W7622.5/15