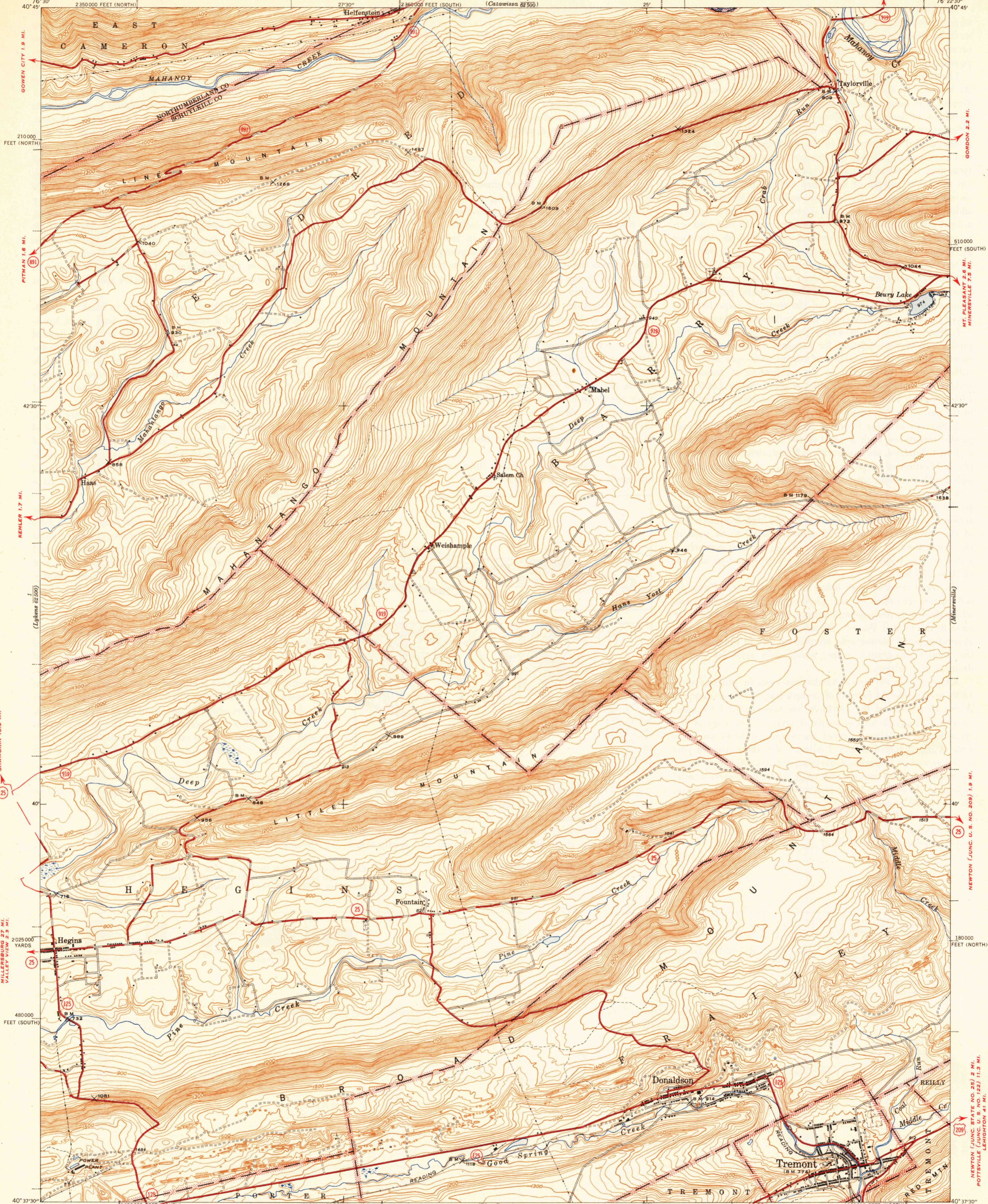


UNITED STATES  
DEPARTMENT OF THE INTERIOR  
GEOLOGICAL SURVEY

STATE OF PENNSYLVANIA  
DEPARTMENT OF INTERNAL AFFAIRS  
WILLIAM S. LIVENGOOD, JR., SECRETARY  
TOPOGRAPHIC AND GEOLOGIC SURVEY  
RALPH W. STONE, STATE GEOLOGIST

PENNSYLVANIA  
TREMONT QUADRANGLE  
7 1/2-MINUTE SERIES



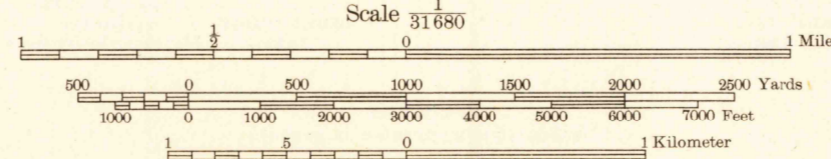
Mapped by the Geological Survey  
1944

**ROAD CLASSIFICATION 1946**

Dependable hard surface heavy-duty road	Dry weather roads	U. S. Route (17)
Secondary hard surface all weather road	Loose-surface graded + Unsurfaced, graded	State Route (25)
Dirt road		

More than two lanes indicated along road with tick at point of change. **LANE, 4 LANE**

Information furnished by Pennsylvania Department of Highways



Contour interval 20 feet  
Datum is mean sea level

Polycyclic projection. 1927 North American datum  
5000 yard grid based on U. S. zone system, A  
10000 foot grids based on Pennsylvania (North) and  
Pennsylvania (South) rectangular coordinate systems

**NORTH PINE GROVE 4.3 MI. (125)**  
**PINE GROVE 6.4 MI. (125)**

TREMONT, PA.  
Edition of 1947

N 4037.5 - W 7622.5 / 15