

U. S. G. S.
FILE COPY
Inspection and Editing

Handle with care

Only 3 copies

Advance sheet
Subject to correction

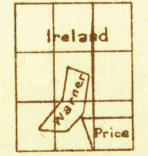
826-S-IV-W/2
STATE OF PENNSYLVANIA
DEPARTMENT OF INTERNAL AFFAIRS
JAMES F. WOODWARD, SECRETARY
TOPOGRAPHIC AND GEOLOGIC SURVEY
GEORGE H. ASHLEY, STATE GEOLOGIST

PENNSYLVANIA
CLEARFIELD QUADRANGLE

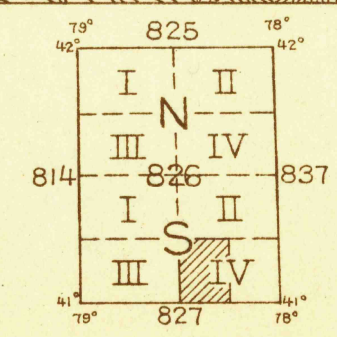
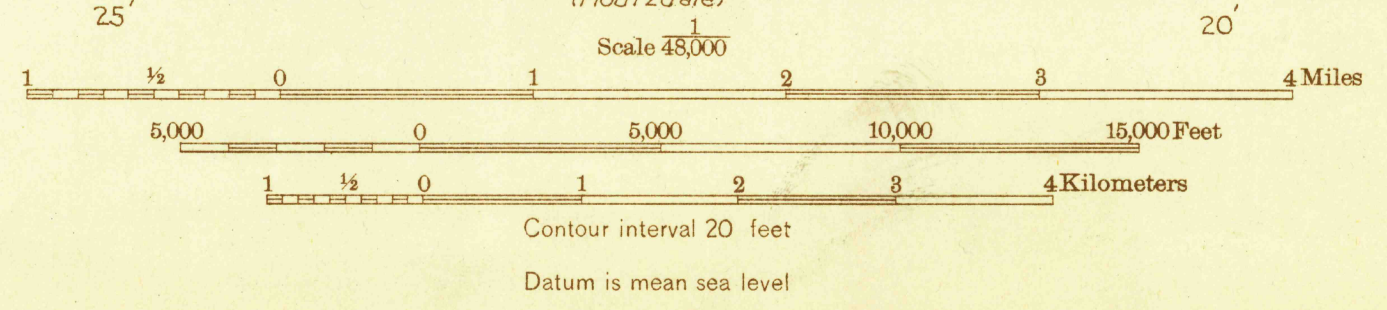


(Curwensville)

Albert Pike, Division Engineer
Topography by E. J. Ireland, C.H. Price and H.G. Warner
Control by U. S. Geological Survey and New York Central Railroad
Surveyed in 1929



APPROXIMATE MEAN
DECLINATION, 1929



USGS
Historical File
Topographic Division

U. S. G. S.
FILE COPY
Inspection and Editing

(Philipsburg)

CLEARFIELD, PA.