

DEPARTMENT OF THE INTERIOR
ALBERT B. FALL, SECRETARY
U. S. GEOLOGICAL SURVEY
GEORGE OTIS SMITH, DIRECTOR

837-S-III-E/2
TOPOGRAPHY

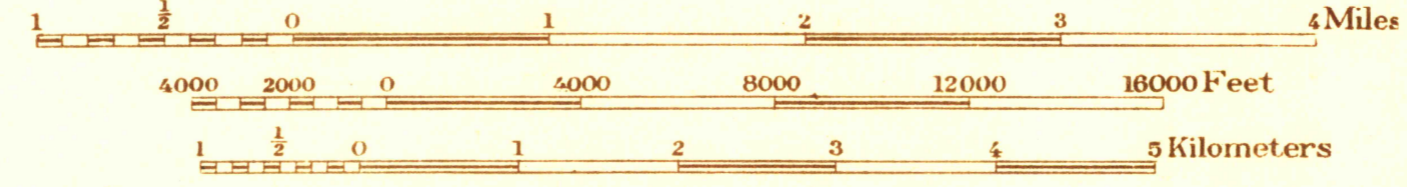
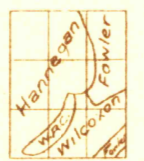
STATE OF PENNSYLVANIA
DEPARTMENT OF INTERNAL AFFAIRS
JAMES F. WOODWARD, SECRETARY
BUREAU OF TOPOGRAPHIC AND GEOLOGICAL SURVEY
GEORGE H. ASHLEY, STATE GEOLOGIST

Advance sheet.
Subject to correction.

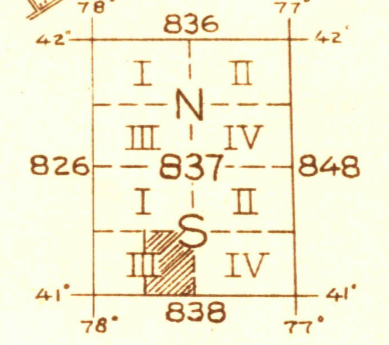
PENNSYLVANIA
HOWARD QUADRANGLE



C. H. Birdseye, Chief Topographic Engineer
Frank Sutton, Division Topographic Engineer
Topography by Duncan Hannegan, A. T. Fowler,
R. F. Wilcox and W. R. Chenoweth
Control by Pennsylvania State Highway Department,
R. G. Clinite and Pennsylvania Railroad
Surveyed in 1921



Scale 1:8000
Contour interval 20 feet.
Datum is mean sea level.



Polyconic projection North American datum
5000 yard grid based upon U. S. zone system, B
APPROXIMATE MEAN DECLINATION 1921

HOWARD