

(Elders Ridge)
79°15'
40°30'

DEPARTMENT OF THE INTERIOR
JOHN BARTON PAYNE, SECRETARY
U. S. GEOLOGICAL SURVEY
GEORGE OTIS SMITH, DIRECTOR

815-S-1-E/2
TOPOGRAPHY
STATE OF PENNSYLVANIA
DEPARTMENT OF INTERNAL AFFAIRS
JAMES F. WOODWARD, SECRETARY
BUREAU OF TOPOGRAPHIC AND GEOLOGICAL SURVEY
GEORGE H. ASHLEY, STATE GEOLOGIST
(Indiana)

Advance sheet.
Subject to correction.

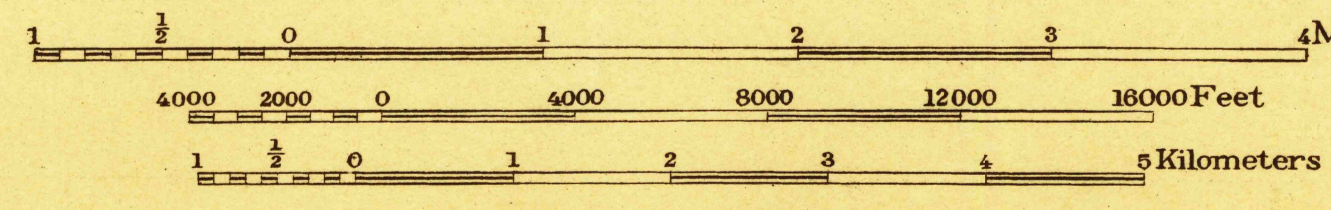
PENNSYLVANIA
NEW FLORENCE QUADRANGLE

24
(Barnesboro)

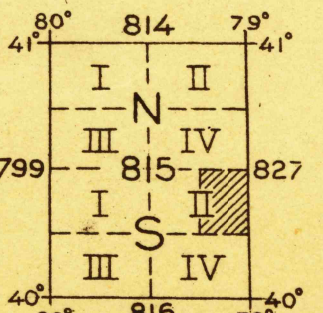


(Stahls town)

C. H. Birdseye, Chief Topographic Engineer
Frank Sutton, Topographic Engineer in charge
Topography by C. C. Gardner, J. L. Lewis and M. J. Gleissner.
Control by Geo. T. Hawkins, S. S. Gannett, Sledge Tatum,
E. L. McNair, S. L. Parker, Walter McCrea and
Pennsylvania State Highway Department.
Surveyed in 1920
SURVEYED IN COOPERATION WITH THE STATE OF PENNSYLVANIA



Contour interval 20 feet.
Datum is mean sea level.



Polyconic Projection, North American datum

USGS
Historical File
Topographic Division

NEW FLORENCE
Edition of 1921

24
(Windber)