

848-5-1-W-2

STATE OF PENNSYLVANIA  
DEPARTMENT OF INTERNAL AFFAIRS  
JAMES F. WOODWARD, SECRETARY  
TOPOGRAPHIC AND GEOLOGIC SURVEY  
GEORGE H. ASHLEY, STATE GEOLOGIST

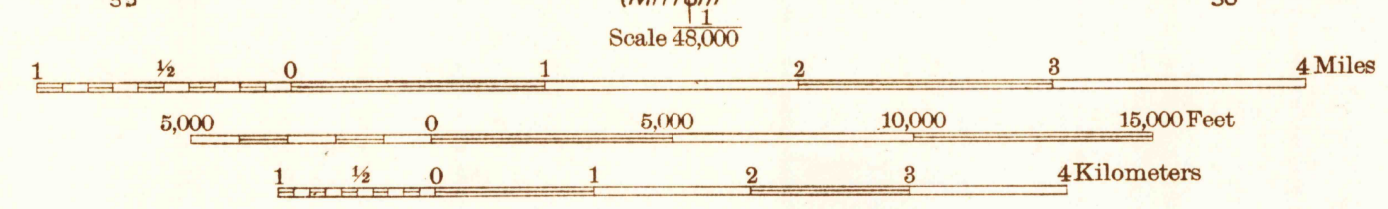
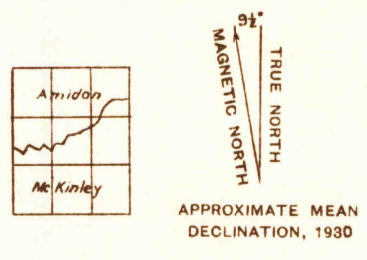
Advance sheet  
Subject to correction

PENNSYLVANIA  
WARRENSVILLE QUADRANGLE

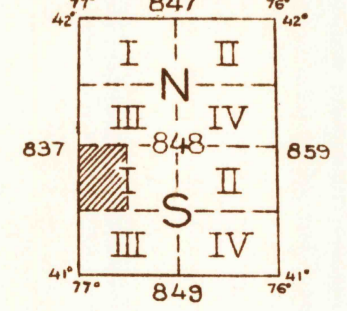
DEPARTMENT OF THE INTERIOR  
U. S. GEOLOGICAL SURVEY



Albert Pike, Division Engineer  
Topography by W.K. McKinley and R.E. Amidon  
Control by U. S. Geological Survey  
Surveyed in 1930



Contour interval 20 feet  
Datum is mean sea level



Polyconic projection. North American datum  
5000 yard grid based upon U. S. zone system, A

WARRENSVILLE, PA.