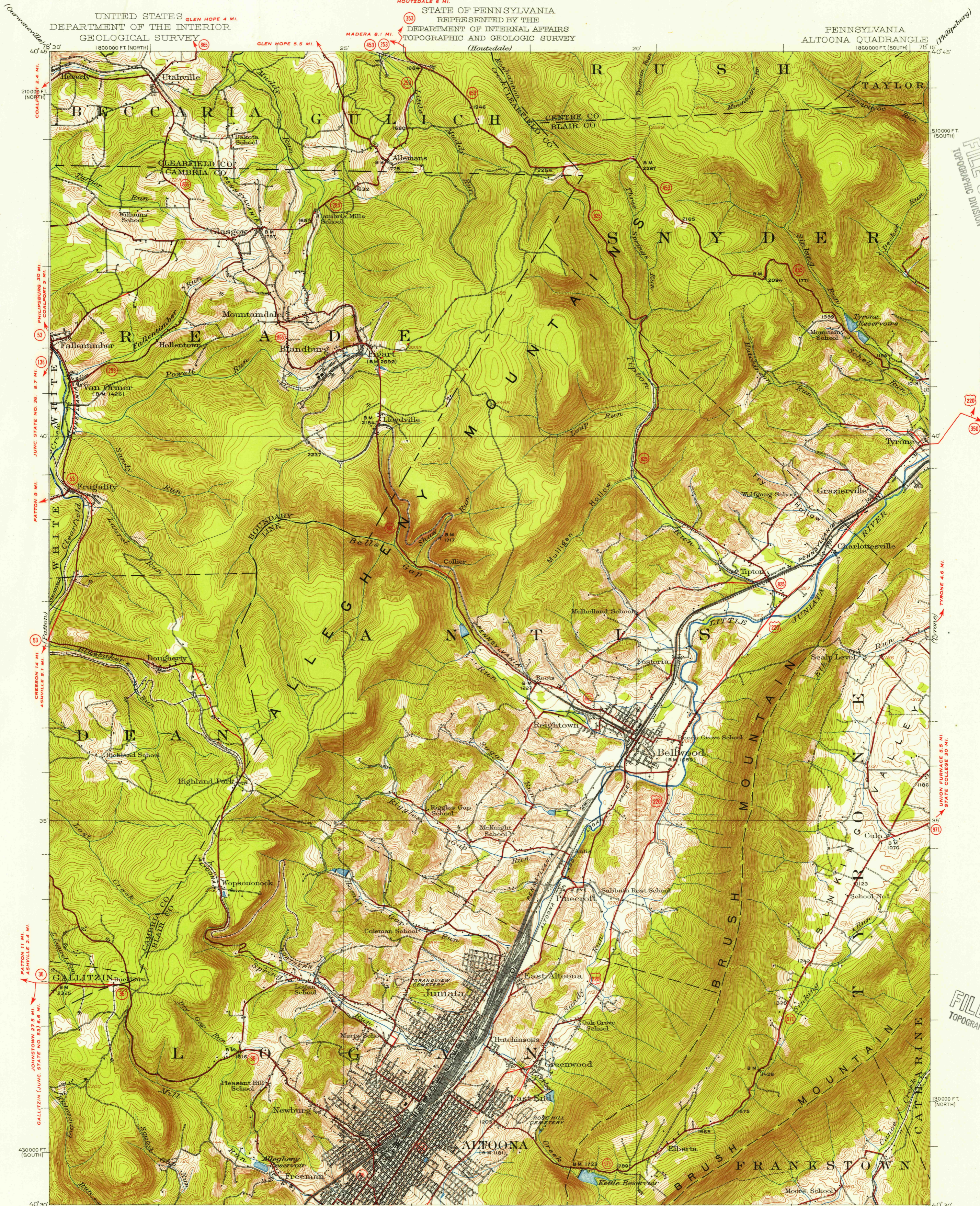


UNITED STATES DEPARTMENT OF THE INTERIOR  
GEOLOGICAL SURVEY

STATE OF PENNSYLVANIA  
REPRESENTED BY THE  
DEPARTMENT OF INTERNAL AFFAIRS  
TOPOGRAPHIC AND GEOLOGIC SURVEY

PENNSYLVANIA  
ALTOONA QUADRANGLE



U.S.G.S.  
FILE COPY  
TOPOGRAPHIC DIVISION

U.S.G.S.  
FILE COPY  
TOPOGRAPHIC DIVISION

C.H. Birdseye, Chief Topographic Engineer.  
Frank Sutton, Topographic Engineer in charge.  
Topography by J.L. Gayetty, W.S. Beames, and F.M. Schilling.  
Control by E.L. McNair, A.H. Thompson, J.L. Lenovitz,  
Pennsylvania State Highway Department, and  
Pennsylvania Railroad.  
Surveyed in 1920.

SCALE 1:62500  
CONTOUR INTERVAL 20 FEET  
DATUM IS MEAN SEA LEVEL

Interior - Geological Survey, Washington, D.C. 1924  
Polyconic projection, 1927 North American datum  
10000-foot grids based on Pennsylvania (South)  
and Pennsylvania (North) rectangular  
coordinate systems

USGS  
Historical File  
Topographic Division

ALTOONA, PA.  
N4030-W7815/16  
1920

FOR SALE BY U.S. GEOLOGICAL SURVEY, WASHINGTON 25, D. C.  
A FOLDER DESCRIBING TOPOGRAPHIC MAPS AND SYMBOLS IS AVAILABLE ON REQUEST

SEP 14 1954

4070