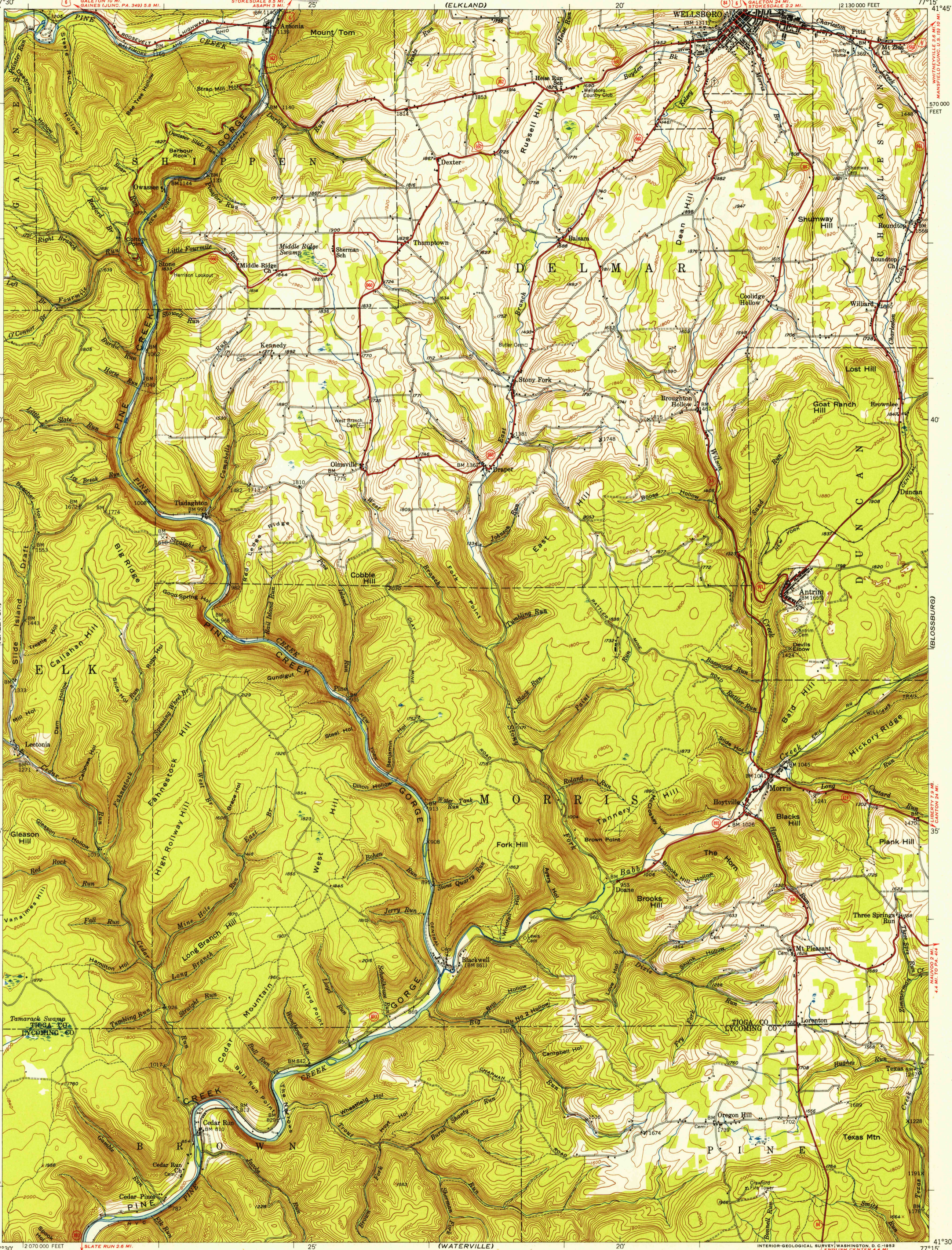
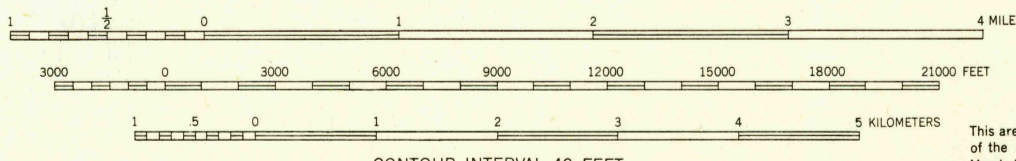


U.S.G.S.
FILE COPY
Inspection and Mapping



Mapped, edited, and published by the Geological Survey
Control by USGS and USC&GS
Topography from aerial photographs by multiplex methods
Aerial photographs taken 1944. Field check 1946
Polyconic projection. 1927 North American datum
10,000-foot grid based on Pennsylvania coordinate system,
north zone



ROAD CLASSIFICATION
Heavy-duty 4 LANE 16 LANE Light-duty
Medium-duty 4 LANE 16 LANE Unimproved dirt
U. S. Route Slate Route

This area is also covered by 1:24 000 scale maps
of the Antrim, Tiadaghton, Cedar Run, and
Morris 7.5 minute quadrangles

U.S.G.S. U.S.G.S.
Historical File
Topographic Division
Inspection and Mapping

ANTRIM, PA.
N4130-W7715/15

1946

SEP 12 1952

3135