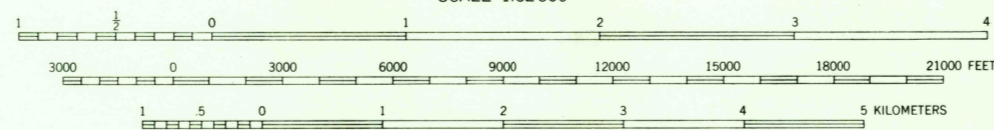
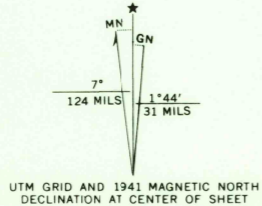


Topography by F. H. Sargent, C. R. Atkins,
H. F. Ewing, and C. A. Killian
Surveyed in 1941

ROAD CLASSIFICATION
 HARD-SURFACE ALL WEATHER ROADS DRY WEATHER ROADS
 Heavy-duty ———— **LANE LANE** Improved dirt ————
 Medium-duty ———— **LANE LANE** Unimproved dirt ————
 Loose-surface, graded, or narrow hard-surface ————
 U. S. Route State Route



Contour interval 20 feet
Datum is mean sea level

FOR SALE BY U. S. GEOLOGICAL SURVEY, WASHINGTON, D. C. 20242
A FOLDER DESCRIBING TOPOGRAPHIC MAPS AND SYMBOLS IS AVAILABLE ON REQUEST

USGS
Historical File
Topographic Division

U.S.G.S.
FILE COPY
TOPOGRAPHIC DIVISION

Geological Survey, Washington, D. C. - 1965
Polyconic projection. 1927 North American datum
5000 yard grid based on U. S. zone system, B
10000 foot grid based on Pennsylvania (North)
rectangular coordinate system
1000-meter Universal Transverse Mercator grid ticks,
zone 17, shown in blue
BENEZETTE, PA.
N4115-W7815/15
1941
AMS 5366 IV-SERIES V731

6335
JAN 1 41966